



SZABO SCANDIC

Part of Europa Biosite

Produktinformation



Forschungsprodukte & Biochemikalien



Zellkultur & Verbrauchsmaterial



Diagnostik & molekulare Diagnostik



Laborgeräte & Service

Weitere Information auf den folgenden Seiten!
See the following pages for more information!



Lieferung & Zahlungsart

siehe unsere [Liefer- und Versandbedingungen](#)

Zuschläge

- Mindermengenzuschlag
- Trockeneiszuschlag
- Gefahrgutzuschlag
- Expressversand

SZABO-SCANDIC HandelsgmbH

Quellenstraße 110, A-1100 Wien

T. +43(0)1 489 3961-0

F. +43(0)1 489 3961-7

mail@szabo-scandic.com

www.szabo-scandic.com

[linkedin.com/company/szaboscandic](https://www.linkedin.com/company/szaboscandic) 

NASP Antibody

Rabbit Polyclonal

Antigen Affinity Purified

Protein ID BAD96536.1

Catalog No. A301-011A-T

GeneID 4678

Lot No. A301-011A-T-1

APPLICATIONS WB

SPECIES REACTIVITY Human

AMOUNT 10 µl

CONCENTRATION 200 µg/ml

STORAGE/SHELF LIFE 2 – 8°C / 1 year from date of receipt

PHYSICAL STATE Liquid

BUFFER Tris-buffered Saline containing 0.1% BSA and 0.09% Sodium Azide

ISOTYPE IgG

ORIGIN USA

PRODUCTION PROCEDURES Antibody was affinity purified using an epitope specific to NASP immobilized on solid support.

The epitope recognized by A301-011A-T maps to a region between residue 150 and 200 of human nuclear autoantigenic sperm protein (histone-binding) using the numbering given in entry BAD96536.1 (GeneID 4678).

APPLICATIONS Centrifuge tube to remove product from lid. Optimal working dilutions should be determined experimentally by the investigator. Prepare working dilution immediately before use.

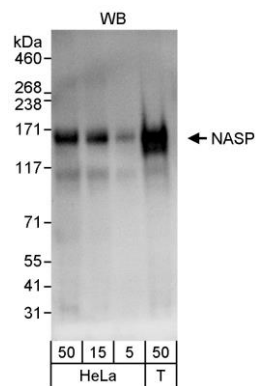
Western Blot 1:2,000 – 1:10,000

Immunoprecipitation Not recommended

ADDITIONAL INFO <https://www.bethyl.com/product/A301-011A-T>

Use the link above to view SDS, a current list of citations, and other product specific information.

This document certifies that this product has met all of the quality control standards defined by Bethyl Laboratories, Inc.
Michael Spencer, PhD Date: June 6, 2022



Detection of human NASP by western blot. *Samples:* Whole cell lysate from HeLa (5, 15 and 50 µg) and HEK293T (T; 50 µg) cells. *Antibody:* Affinity purified rabbit anti-NASP antibody A301-011A used for WB at 0.04 µg/ml. *Detection:* Chemiluminescence with an exposure time of 10 seconds.