



SZABO SCANDIC

Part of Europa Biosite

Produktinformation



Forschungsprodukte & Biochemikalien



Zellkultur & Verbrauchsmaterial



Diagnostik & molekulare Diagnostik



Laborgeräte & Service

Weitere Information auf den folgenden Seiten!
See the following pages for more information!



Lieferung & Zahlungsart

siehe unsere [Liefer- und Versandbedingungen](#)

Zuschläge

- Mindermengenzuschlag
- Trockeneiszuschlag
- Gefahrgutzuschlag
- Expressversand

SZABO-SCANDIC Handels GmbH

Quellenstraße 110, A-1100 Wien

T. +43(0)1 489 3961-0

F. +43(0)1 489 3961-7

mail@szabo-scandic.com

www.szabo-scandic.com

[linkedin.com/company/szaboscandic](https://www.linkedin.com/company/szaboscandic)



SMARCA2/BRM Antibody

Rabbit Polyclonal

Antigen Affinity Purified

Protein ID CAA51407.1

Catalog No. A301-014A-T

GeneID 6595

Lot No. A301-014A-T-1

APPLICATIONS WB, IP

SPECIES REACTIVITY Human

AMOUNT 10 µl

CONCENTRATION 200 µg/ml

STORAGE/SHELF LIFE 2 – 8°C / 1 year from date of receipt

PHYSICAL STATE Liquid

BUFFER Tris-buffered Saline containing 0.1% BSA and 0.09% Sodium Azide

ISOTYPE IgG

ORIGIN USA

PRODUCTION PROCEDURES Antibody was affinity purified using an epitope specific to SMARCA2/BRM immobilized on solid support.

The epitope recognized by A301-014A-T maps to a region between residue 1 and 50 of human SWI/SNF related, matrix associated, actin dependent regulator of chromatin, subfamily a, member 2 using the numbering given in entry CAA51407.1 (GeneID 6595).

APPLICATIONS Centrifuge tube to remove product from lid. Optimal working dilutions should be determined experimentally by the investigator. Prepare working dilution immediately before use.

Western Blot 1:2,000 – 1:10,000

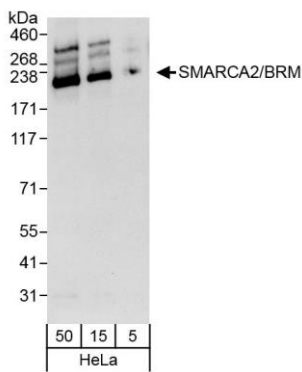
Immunoprecipitation 2 – 5 µg/mg lysate

ADDITIONAL INFO <https://www.bethyl.com/product/A301-014A-T>

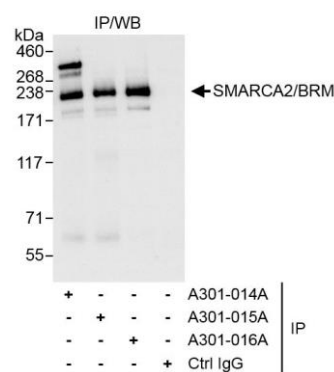
Use the link above to view SDS, a current list of citations, and other product specific information.

IP-western blot protocol: https://www.bethyl.com/content/protocol_IP_WB

This document certifies that this product has met all of the quality control standards defined by Bethyl Laboratories, Inc.
Michael Spencer, PhD Date: June 6, 2022



Detection of human SMARCA2/BRM by western blot.
Samples: Whole cell lysate (5, 15 and 50 µg) from HeLa cells. *Antibodies:* Affinity purified rabbit anti-SMARCA2/BRM antibody A301-014A (lot A301-014A-1) used for WB at 0.04 µg/ml. *Detection:* Chemiluminescence with exposure time of 10 seconds.



Detection of human SMARCA2/BRM by western blot of immunoprecipitates. *Samples:* Whole cell lysate (1 mg for IP, 20% of IP loaded) from HeLa cells. *Antibodies:* Affinity purified rabbit anti-SMARCA2/BRM antibody A301-014A (lot A301-014A-1) used for IP at 3 µg/mg lysate. SMARCA2/BRM was also immunoprecipitated by rabbit anti-SMARCA2/BRM antibodies A301-015A and A301-016A, which recognize downstream epitopes. For blotting immunoprecipitated SMARCA2/BRM, A301-014A was used at 1.0 µg/ml. *Detection:* Chemiluminescence with exposure time of 3 seconds.