



# SZABO SCANDIC

Part of Europa Biosite

## Produktinformation



Forschungsprodukte & Biochemikalien



Zellkultur & Verbrauchsmaterial



Diagnostik & molekulare Diagnostik



Laborgeräte & Service

Weitere Information auf den folgenden Seiten!  
See the following pages for more information!



### Lieferung & Zahlungsart

siehe unsere [Liefer- und Versandbedingungen](#)

### Zuschläge

- Mindermengenzuschlag
- Trockeneiszuschlag
- Gefahrgutzuschlag
- Expressversand

### SZABO-SCANDIC Handels GmbH

Quellenstraße 110, A-1100 Wien

T. +43(0)1 489 3961-0

F. +43(0)1 489 3961-7

[mail@szabo-scandic.com](mailto:mail@szabo-scandic.com)

[www.szabo-scandic.com](http://www.szabo-scandic.com)

[linkedin.com/company/szaboscandic](https://www.linkedin.com/company/szaboscandic)



# SMARCA2/BRM Antibody

Rabbit Polyclonal

Antigen Affinity Purified

Protein ID CAA51407.1

Catalog No. A301-014A

GeneID 6595

Lot No. A301-014A-1



APPLICATIONS	WB, IP
SPECIES REACTIVITY	Human
AMOUNT	100 µl
CONCENTRATION	200 µg/ml
STORAGE/SHELF LIFE	2 – 8° C / 1 year from date of receipt
PHYSICAL STATE	Liquid
BUFFER	Tris-buffered Saline containing 0.1% BSA and 0.09% Sodium Azide
ISOTYPE	IgG
ORIGIN	USA
PRODUCTION PROCEDURES	Antibody was affinity purified using an epitope specific to SMARCA2/BRM immobilized on solid support.

The epitope recognized by A301-014A maps to a region between residue 1 and 50 of human SWI/SNF related, matrix associated, actin dependent regulator of chromatin, subfamily a, member 2 using the numbering given in entry CAA51407.1 (GeneID 6595).

Immunoglobulin concentration was determined by extinction coefficient: absorbance at 280 nm of 1.4 equals 1.0 mg of IgG.

**APPLICATIONS** Centrifuge tube to remove product from lid. Optimal working dilutions should be determined experimentally by the investigator. Prepare working dilution immediately before use.

Western Blot 1:2,000 – 1:10,000

Immunoprecipitation 2 – 5 µg/mg lysate

**APPLICATION NOTES** Western blot of immunoprecipitates performed using Normal Pig Serum (Cat. No. S100-020), Goat anti-Rabbit Light Chain HRP Conjugate (Cat. No. A120-113P) and 4-8% SDS-PAGE (link to IP-western blot protocol in Additional Info section below).

**ADDITIONAL INFO** Western blot of lysates performed using standard western blot reagents and 4-8% SDS-PAGE.

<https://www.bethyl.com/product/A301-014A>

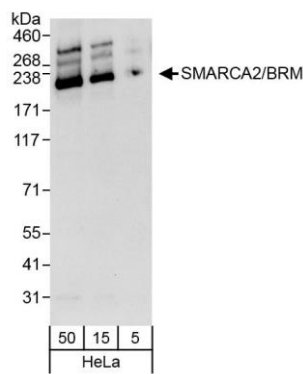
Use the link above to view SDS, a current list of citations, and other product specific information.

IP-western blot protocol [https://www.bethyl.com/content/protocol\\_IP\\_WB](https://www.bethyl.com/content/protocol_IP_WB)

This document certifies that this product has met all of the quality control standards defined by Bethyl Laboratories, Inc.

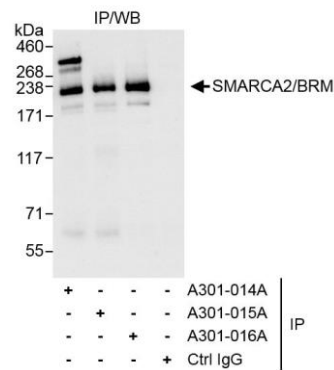
Eric McIntush, PhD | Chief Scientific Officer

Date: October 17, 2019



**Detection of human SMARCA2/BRM by western blot.**

*Samples:* Whole cell lysate (5, 15 and 50 µg) from HeLa cells. *Antibodies:* Affinity purified rabbit anti-SMARCA2/BRM antibody A301-014A (lot A301-014A-1) used for WB at 0.04 µg/ml. *Detection:* Chemiluminescence with exposure time of 10 seconds.



**Detection of human SMARCA2/BRM by western blot of immunoprecipitates.**

*Samples:* Whole cell lysate (1 mg for IP, 20% of IP loaded) from HeLa cells. *Antibodies:* Affinity purified rabbit anti-SMARCA2/BRM antibody A301-014A (lot A301-014A-1) used for IP at 3 µg/mg lysate. SMARCA2/BRM was also immunoprecipitated by rabbit anti-SMARCA2/BRM antibodies A301-015A and A301-016A, which recognize downstream epitopes. For blotting immunoprecipitated SMARCA2/BRM, A301-014A was used at 1.0 µg/ml. *Detection:* Chemiluminescence with exposure time of 3 seconds.