



SZABO SCANDIC

Part of Europa Biosite

Produktinformation



Forschungsprodukte & Biochemikalien



Zellkultur & Verbrauchsmaterial



Diagnostik & molekulare Diagnostik



Laborgeräte & Service

Weitere Information auf den folgenden Seiten!
See the following pages for more information!



Lieferung & Zahlungsart

siehe unsere [Liefer- und Versandbedingungen](#)

Zuschläge

- Mindermengenzuschlag
- Trockeneiszuschlag
- Gefahrgutzuschlag
- Expressversand

SZABO-SCANDIC HandelsgmbH

Quellenstraße 110, A-1100 Wien

T. +43(0)1 489 3961-0

F. +43(0)1 489 3961-7

mail@szabo-scandic.com

www.szabo-scandic.com

[linkedin.com/company/szaboscandic](https://www.linkedin.com/company/szaboscandic) 

SMARCA2/BRM Antibody

Rabbit Polyclonal

Antigen Affinity Purified

Protein ID CAA51407.1

Catalog No. A301-016A

GeneID 6595

Lot No. A301-016A-1



APPLICATIONS	WB, IP
SPECIES REACTIVITY	Human
AMOUNT	100 µl
CONCENTRATION	200 µg/ml
STORAGE/SHELF LIFE	2 – 8° C / 1 year from date of receipt
PHYSICAL STATE	Liquid
BUFFER	Tris-buffered Saline containing 0.1% BSA and 0.09% Sodium Azide
ISOTYPE	IgG
ORIGIN	USA
PRODUCTION PROCEDURES	Antibody was affinity purified using an epitope specific to SMARCA2/BRM immobilized on solid support.

The epitope recognized by A301-016A maps to a region between residue 1325 and 1375 of human SWI/SNF related, matrix associated, actin dependent regulator of chromatin, subfamily a, member 2 using the numbering given in entry CAA51407.1 (GeneID 6595).

Immunoglobulin concentration was determined by extinction coefficient: absorbance at 280 nm of 1.4 equals 1.0 mg of IgG.

APPLICATIONS Centrifuge tube to remove product from lid. Optimal working dilutions should be determined experimentally by the investigator. Prepare working dilution immediately before use.

Western Blot 1:2,000 – 1:10,000

Immunoprecipitation 2 – 5 µg/mg lysate

APPLICATION NOTES Western blot of immunoprecipitates performed using Normal Pig Serum (Cat. No. S100-020), Goat anti-Rabbit Light Chain HRP Conjugate (Cat. No. A120-113P) and 4-8% SDS-PAGE (link to IP-western blot protocol in Additional Info section below).

ADDITIONAL INFO Western blot of lysates performed using standard western blot reagents and 4-8% SDS-PAGE.

<https://www.bethyl.com/product/A301-016A>

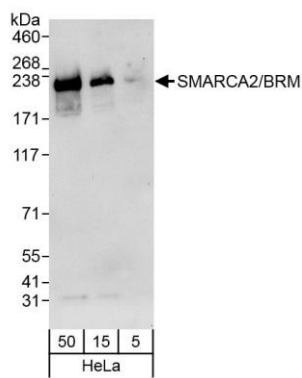
Use the link above to view SDS, a current list of citations, and other product specific information.

IP-western blot protocol https://www.bethyl.com/content/protocol_IP_WB

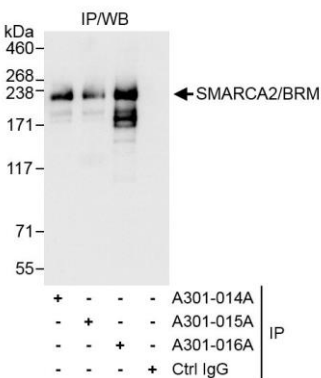
This document certifies that this product has met all of the quality control standards defined by Bethyl Laboratories, Inc.

Eric McIntush, PhD | Chief Scientific Officer

Date: October 17, 2019



Detection of human SMARCA2/BRM by western blot.
Samples: Whole cell lysate (5, 15 and 50 µg) from HeLa cells. *Antibodies:* Affinity purified rabbit anti-SMARCA2/BRM antibody A301-016A (lot A301-016A-1) used for WB at 0.04 µg/ml. *Detection:* Chemiluminescence with exposure time of 30 seconds.



Detection of human SMARCA2/BRM by western blot of immunoprecipitates. *Samples:* Whole cell lysate (1 mg for IP, 20% of IP loaded) from HeLa cells. *Antibodies:* Affinity purified rabbit anti-SMARCA2/BRM antibody A301-016A (lot A301-016A-1) used for WB at 0.04 µg/ml. SMARCA2/BRM was also immunoprecipitated by rabbit anti-SMARCA2/BRM antibodies A301-014A and A301-015A, which recognize upstream epitopes. For blotting immunoprecipitated SMARCA2/BRM, A301-016A was used at 1.0 µg/ml. *Detection:* Chemiluminescence with exposure time of 3 seconds.