



SZABO SCANDIC

Part of Europa Biosite

Produktinformation



Forschungsprodukte & Biochemikalien



Zellkultur & Verbrauchsmaterial



Diagnostik & molekulare Diagnostik



Laborgeräte & Service

Weitere Information auf den folgenden Seiten!
See the following pages for more information!



Lieferung & Zahlungsart

siehe unsere [Liefer- und Versandbedingungen](#)

Zuschläge

- Mindermengenzuschlag
- Trockeneiszuschlag
- Gefahrgutzuschlag
- Expressversand

SZABO-SCANDIC Handels GmbH

Quellenstraße 110, A-1100 Wien

T. +43(0)1 489 3961-0

F. +43(0)1 489 3961-7

mail@szabo-scandic.com

www.szabo-scandic.com

[linkedin.com/company/szaboscandic](https://www.linkedin.com/company/szaboscandic)



SNF2h/ISWI/SMARCA5 Antibody

Rabbit Polyclonal

Antigen Affinity Purified	RefSeq ID	NP_003592.3
Catalog No. A301-017A	Uniprot ID	O60264
Lot No. 2	GeneID	8467

APPLICATIONS	WB, IP
SPECIES REACTIVITY	Human
PRESUMED REACTIVITY	Based on 100% sequence identity, this antibody is predicted to react with Mouse
AMOUNT	100 µl
CONCENTRATION	200 µg/ml
STORAGE/SHELF LIFE	2 – 8°C / 1 year from date of receipt
PHYSICAL STATE	Liquid
BUFFER	Tris-buffered Saline containing 0.1% BSA and 0.09% Sodium Azide
ISOTYPE	IgG
ORIGIN	USA
PRODUCTION PROCEDURES	Antibody was affinity purified using an epitope specific to SNF2h/ISWI/SMARCA5 immobilized on solid support.

The epitope recognized by A301-017A maps to a region between residue 50 and 100 of human Sucrose nonfermenting protein 2 homolog (SWI/SNF related, matrix associated, actin dependent regulator of chromatin, subfamily a, member 5) using the numbering given in entry NP_003592.2 (GeneID 8467).

Immunoglobulin concentration was determined by extinction coefficient: absorbance at 280 nm of 1.4 equals 1.0 mg of IgG.

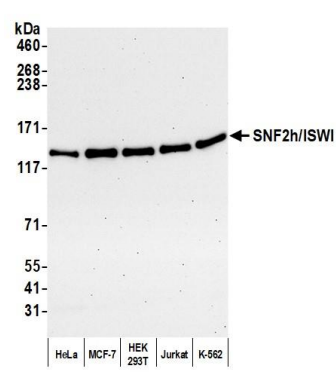
APPLICATIONS Centrifuge tube to remove product from lid. Optimal working dilutions should be determined experimentally by the investigator. Prepare working dilution immediately before use.

Western Blot	1:2,000 – 1:10,000
Immunoprecipitation	2 – 10 µg/mg lysate

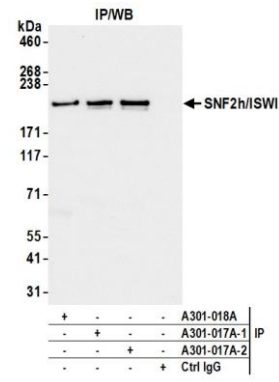
ADDITIONAL INFO <https://www.fortislifesciences.com/p/A301-017A>

Use the link above to view SDS, a current list of citations, and other product specific information.

This document certifies that this product has met all of the quality control standards defined by Bethyl Laboratories, Inc.
Michael Spencer, PhD Date: August 16, 2023



Detection of human SNF2h/ISWI/SMARCA5 by western blot. *Samples:* Whole cell lysate (10 µg) from HeLa, MCF-7, HEK293T, Jurkat, and K-562 cells prepared using NETN lysis buffer. *Antibody:* Affinity purified rabbit anti-SNF2h/ISWI/SMARCA5 antibody A301-017A (A301-017A lot 2) used for WB at 0.04 µg/ml. *Detection:* Chemiluminescence with an exposure time of 30 seconds.



Detection of human SNF2h/ISWI/SMARCA5 by western blot of immunoprecipitates. *Samples:* Whole cell lysate (1.0 mg per IP reaction; 10% of IP loaded) from HeLa cells prepared using NETN lysis buffer. *Antibodies:* Affinity purified rabbit anti-SNF2h/ISWI/SMARCA5 antibody (A301-017A lot 2) used for IP at 6 µg per reaction. SNF2h/ISWI/SMARCA5 was also immunoprecipitated by a previous lot of this antibody (A301-017A lot 1) and a second antibody against a different epitope of SNF2h/ISWI/SMARCA5 (A301-018A). For blotting immunoprecipitated SNF2h/ISWI/SMARCA5, A301-017A was used at 0.04 µg/ml. *Detection:* Chemiluminescence with an exposure time of 3 seconds.