



# SZABO SCANDIC

Part of Europa Biosite

## Produktinformation



Forschungsprodukte & Biochemikalien



Zellkultur & Verbrauchsmaterial



Diagnostik & molekulare Diagnostik



Laborgeräte & Service

Weitere Information auf den folgenden Seiten!  
See the following pages for more information!



### Lieferung & Zahlungsart

siehe unsere [Liefer- und Versandbedingungen](#)

### Zuschläge

- Mindermengenzuschlag
- Trockeneiszuschlag
- Gefahrgutzuschlag
- Expressversand

### SZABO-SCANDIC HandelsgmbH

Quellenstraße 110, A-1100 Wien

T. +43(0)1 489 3961-0

F. +43(0)1 489 3961-7

[mail@szabo-scandic.com](mailto:mail@szabo-scandic.com)

[www.szabo-scandic.com](http://www.szabo-scandic.com)

[linkedin.com/company/szaboscandic](https://www.linkedin.com/company/szaboscandic) 

# SMARCC1 /BAF155 Antibody

Rabbit Polyclonal

Antigen Affinity Purified	Protein ID	NP_003065.2
Catalog No. A301-020A-T	GeneID	6599
Lot No. A301-020A-T-2		

<b>APPLICATIONS</b>	WB, IP
<b>SPECIES REACTIVITY</b>	Human
<b>AMOUNT</b>	10 µl
<b>CONCENTRATION</b>	1000 µg/ml
<b>STORAGE/SHELF LIFE</b>	2 – 8°C / 1 year from date of receipt
<b>PHYSICAL STATE</b>	Liquid
<b>BUFFER</b>	Tris-citrate/phosphate buffer, pH 7 to 8 containing 0.09% Sodium Azide
<b>ISOTYPE</b>	IgG
<b>ORIGIN</b>	USA
<b>PRODUCTION PROCEDURES</b>	Antibody was affinity purified using an epitope specific to SMARCC1 /BAF155 immobilized on solid support.

The epitope recognized by A301-020A-T maps to a region between residue 750 and 800 of human SWI/SNF related, matrix associated, actin dependent regulator of chromatin, subfamily c, member 1/BRG1-associated factor 155 using the numbering given in entry NP\_003065.2 (GeneID 6599).

**APPLICATIONS** Centrifuge tube to remove product from lid. Optimal working dilutions should be determined experimentally by the investigator. Prepare working dilution immediately before use.

Western Blot 1:2,000 – 1:10,000

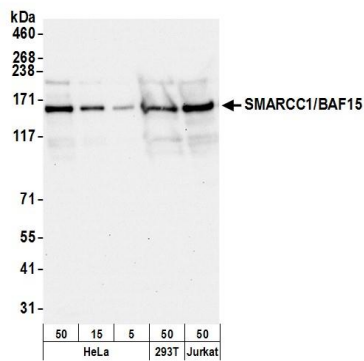
Immunoprecipitation 2 – 5 µg/mg lysate

**ADDITIONAL INFO** <https://www.bethyl.com/product/A301-020A-T>

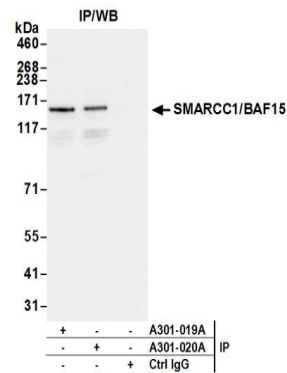
Use the link above to view SDS, a current list of citations, and other product specific information.

IP-western blot protocol: [https://www.bethyl.com/content/protocol\\_IP\\_WB](https://www.bethyl.com/content/protocol_IP_WB)

This document certifies that this product has met all of the quality control standards defined by Bethyl Laboratories, Inc.  
Michael Spencer, PhD Date: June 6, 2022



**Detection of human and mouse SMARCC1/BAF155 by western blot.** *Samples:* Whole cell lysate from HeLa (5, 15 and 50 µg), HEK293T (50 µg), and Jurkat (50 µg) cells prepared using NETN lysis buffer. *Antibody:* Affinity purified rabbit anti-SMARCC1/BAF155 antibody A301-020A (lot A301-020A-2) used for WB at 0.04 µg/ml. *Detection:* Chemiluminescence with an exposure time of 10 seconds.



**Detection of human SMARCC1/BAF155 by western blot of immunoprecipitates.** *Samples:* Whole cell lysate (1.0 mg per IP reaction; 20% of IP loaded) from HeLa cells prepared using NETN lysis buffer. *Antibodies:* Affinity purified rabbit anti-SMARCC1/BAF155 antibody A301-020A (lot A301-020A-2) used for IP at 3 µg per reaction. SMARCC1/BAF155 was also immunoprecipitated by rabbit anti-SMARCC1/BAF155 antibody A301-019A. For blotting immunoprecipitated SMARCC1/BAF155, A301-020A was used at 0.4 µg/ml. *Detection:* Chemiluminescence with an exposure time of 3 seconds.