



SZABO SCANDIC

Part of Europa Biosite

Produktinformation



Forschungsprodukte & Biochemikalien



Zellkultur & Verbrauchsmaterial



Diagnostik & molekulare Diagnostik



Laborgeräte & Service

Weitere Information auf den folgenden Seiten!
See the following pages for more information!



Lieferung & Zahlungsart

siehe unsere [Liefer- und Versandbedingungen](#)

Zuschläge

- Mindermengenzuschlag
- Trockeneiszuschlag
- Gefahrgutzuschlag
- Expressversand

SZABO-SCANDIC HandelsgmbH

Quellenstraße 110, A-1100 Wien

T. +43(0)1 489 3961-0

F. +43(0)1 489 3961-7

mail@szabo-scandic.com

www.szabo-scandic.com

[linkedin.com/company/szaboscandic](https://www.linkedin.com/company/szaboscandic) 

CEP170 Antibody

Rabbit Polyclonal

Antigen Affinity Purified

Protein ID NP_055627.2

Catalog No. A301-024A

GeneID 9859

Lot No. A301-024A-2



APPLICATIONS WB, IP, ICC-IF, ChIP-Seq

SPECIES REACTIVITY Human

AMOUNT 100 µl

CONCENTRATION 200 µg/ml

STORAGE/SHELF LIFE 2 – 8° C / 1 year from date of receipt

PHYSICAL STATE Liquid

BUFFER Tris-buffered Saline containing 0.1% BSA and 0.09% Sodium Azide

ISOTYPE IgG

ORIGIN USA

PRODUCTION PROCEDURES Antibody was affinity purified using an epitope specific to CEP170 immobilized on solid support.

The epitope recognized by A301-024A maps to a region between residue 1534 and the C-terminus (residue 1584) of human centrosomal protein 170kDa using the numbering given in entry NP_055627.2 (GeneID 9859).

Immunoglobulin concentration was determined by extinction coefficient: absorbance at 280 nm of 1.4 equals 1.0 mg of IgG.

APPLICATIONS Centrifuge tube to remove product from lid. Optimal working dilutions should be determined experimentally by the investigator. Prepare working dilution immediately before use.

Western Blot 1:2,000 – 1:10,000

Immunoprecipitation 2 – 10 µg/mg lysate

Immunofluorescence (ICC) 1:100 – 1:500. Formaldehyde fixation is recommended. Permeabilization with Triton-X 100 is recommended for formaldehyde-fixed cells.

ChIP-Seq ChIP-Seq 10 µg as per Ram O et al., Cell. 2011 Dec 23;147(7):1628–39. Previous lots of this antibody have performed in this application.

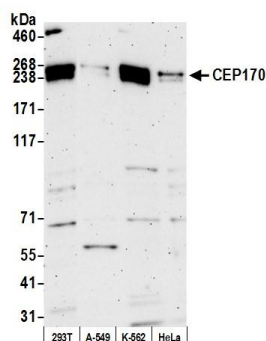
IHC HUMAN CONTROLS HeLa Cells

ADDITIONAL INFO <https://www.bethyl.com/product/A301-024A>

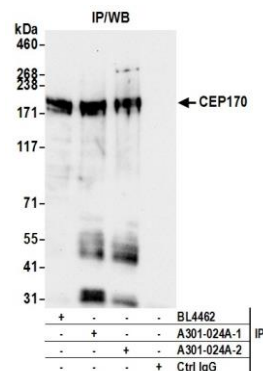
Use the link above to view SDS, a current list of citations, and other product specific information.

IP-western blot protocol: https://www.bethyl.com/content/protocol_IP_WB

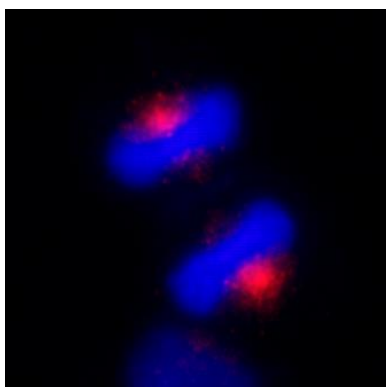
This document certifies that this product has met all of the quality control standards defined by Bethyl Laboratories, Inc.
Eric McIntush, PhD | Chief Scientific Officer Date: July 28, 2020



Detection of human CEP170 by western blot. *Samples:* Whole cell lysate (15 µg) from HEK293T, A-549, K-562, and HeLa cells prepared using NETN lysis buffer. *Antibody:* Affinity purified rabbit anti-CEP170 antibody A301-024A (lot A301-024A-2) used for WB at 0.04 µg/ml. *Detection:* Chemiluminescence with an exposure time of 3 minutes.



Detection of human CEP170 by western blot of immunoprecipitates. *Samples:* Whole cell lysate (1.0 mg per IP reaction; 20% of IP loaded) from HeLa cells prepared using NETN lysis buffer. *Antibodies:* Affinity purified rabbit anti-CEP170 antibody A301-024A (lot A301-024A-2) used for IP at 6 µg per reaction. CEP170 was also immunoprecipitated by a previous lot of this antibody (lot A301-024A-1) and rabbit anti-CEP170 antibody BL4462. For blotting immunoprecipitated CEP170, A301-024A was used at 0.04 µg/ml. *Detection:* Chemiluminescence with an exposure time of 10 seconds.



Detection of human CEP170 by immunocytochemistry. *Sample:* NBF-fixed asynchronous HeLa cells. *Antibody:* Affinity purified rabbit anti-CEP170 (Cat. No. A301-024A) used at a dilution of 1:200 (1 µg/ml). *Detection:* Red-fluorescent goat anti-rabbit IgG highly cross-adsorbed Antibody used at a dilution of 1:100.