



# SZABO SCANDIC

Part of Europa Biosite

## Produktinformation



Forschungsprodukte & Biochemikalien



Zellkultur & Verbrauchsmaterial



Diagnostik & molekulare Diagnostik



Laborgeräte & Service

Weitere Information auf den folgenden Seiten!  
See the following pages for more information!



### Lieferung & Zahlungsart

siehe unsere [Liefer- und Versandbedingungen](#)

### Zuschläge

- Mindermengenzuschlag
- Trockeneiszuschlag
- Gefahrgutzuschlag
- Expressversand

### SZABO-SCANDIC HandelsgmbH

Quellenstraße 110, A-1100 Wien

T. +43(0)1 489 3961-0

F. +43(0)1 489 3961-7

[mail@szabo-scandic.com](mailto:mail@szabo-scandic.com)

[www.szabo-scandic.com](http://www.szabo-scandic.com)

[linkedin.com/company/szaboscandic](https://www.linkedin.com/company/szaboscandic) 

# RBM16 Antibody

Rabbit Polyclonal

Antigen Affinity Purified

Protein ID NP\_055707.3

Catalog No. A301-037A-T

GeneID 22828

Lot No. A301-037A-T-1

**APPLICATIONS** WB, IP, IHC

**SPECIES REACTIVITY** Human, Mouse

**AMOUNT** 10 µl

**CONCENTRATION** 200 µg/ml

**STORAGE/SHELF LIFE** 2 – 8°C / 1 year from date of receipt

**PHYSICAL STATE** Liquid

**BUFFER** Tris-buffered Saline containing 0.1% BSA and 0.09% Sodium Azide

**ISOTYPE** IgG

**ORIGIN** USA

**PRODUCTION PROCEDURES** Antibody was affinity purified using an epitope specific to RBM16 immobilized on solid support.

The epitope recognized by A301-037A-T maps to a region between residue 1221 and the C-terminus (residue 1271) of human RNA binding motif protein 16 using the numbering given in entry NP\_055707.3 (GeneID 22828).

**APPLICATIONS** Centrifuge tube to remove product from lid. Optimal working dilutions should be determined experimentally by the investigator. Prepare working dilution immediately before use.

Western Blot 1:2,000 – 1:10,000

Immunoprecipitation 2 – 5 µg/mg lysate

Immunohistochemistry 1:500 – 1:2,000. Epitope retrieval with citrate buffer pH 6.0 is recommended for FFPE tissue sections.

**ADDITIONAL INFO** <https://www.bethyl.com/product/A301-037A-T>

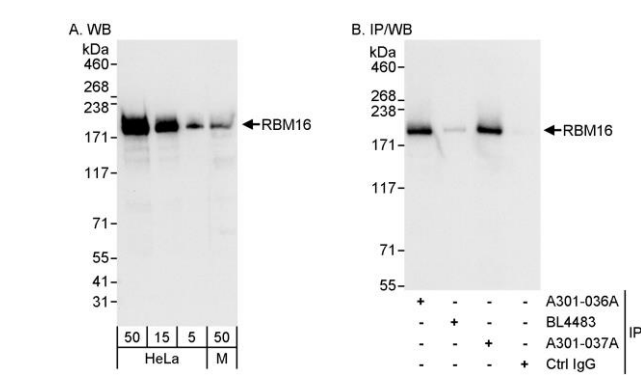
Use the link above to view SDS, a current list of citations, and other product specific information.

IP-western blot protocol: [https://www.bethyl.com/content/protocol\\_IP\\_WB](https://www.bethyl.com/content/protocol_IP_WB)

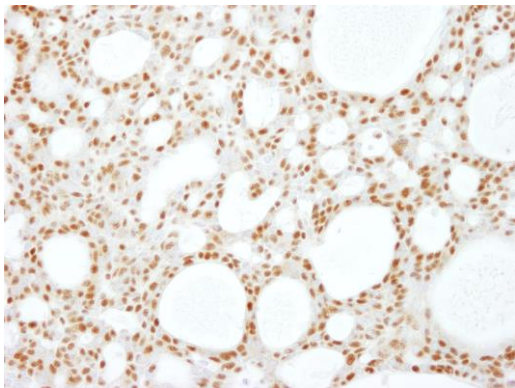
This document certifies that this product has met all of the quality control standards defined by Bethyl Laboratories, Inc.

Michael Spencer, PhD

Date: June 6, 2022



**Detection of human and mouse RBM16 by western blot (h&m) and immunoprecipitation (h).** *Samples:* Whole cell lysate from HeLa (5, 15 and 50 µg for WB; 1 mg for IP, 20% of IP loaded) and mouse NIH 3T3 (M; 50 µg) cells. *Antibodies:* Affinity purified rabbit anti-RBM16 antibody A301-037A used for WB at 0.04 µg/ml (A) and 1 µg/ml (B), and used for IP at 3 µg/mg lysate. RBM16 was also immunoprecipitated by rabbit anti-RBM16 antibodies A301-036A and BL4483, which recognize upstream epitopes. *Detection:* Chemiluminescence with exposure times of 10 seconds (A) and 1 second (B).



**Detection of human RBM16 by immunohistochemistry.** *Sample:* FFPE section of human skin basal cell carcinoma. *Antibody:* Affinity purified rabbit anti-RBM16 (Cat. No. A301-037A Lot1) used at a dilution of 1:200 (1µg/ml). *Detection:* DAB