



SZABO SCANDIC

Part of Europa Biosite

Produktinformation



Forschungsprodukte & Biochemikalien



Zellkultur & Verbrauchsmaterial



Diagnostik & molekulare Diagnostik



Laborgeräte & Service

Weitere Information auf den folgenden Seiten!
See the following pages for more information!



Lieferung & Zahlungsart

siehe unsere [Liefer- und Versandbedingungen](#)

Zuschläge

- Mindermengenzuschlag
- Trockeneiszuschlag
- Gefahrgutzuschlag
- Expressversand

SZABO-SCANDIC HandelsgmbH

Quellenstraße 110, A-1100 Wien

T. +43(0)1 489 3961-0

F. +43(0)1 489 3961-7

mail@szabo-scandic.com

www.szabo-scandic.com

[linkedin.com/company/szaboscandic](https://www.linkedin.com/company/szaboscandic) 

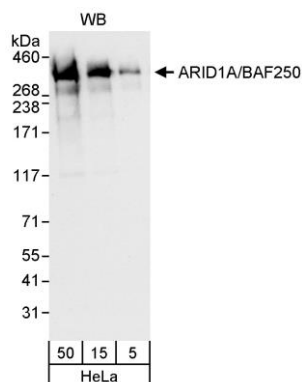
ARID1A/BAF250 Antibody

Rabbit Polyclonal

Antigen Affinity Purified	Protein ID	NP_006006.3
Catalog No. A301-041A-T	GeneID	8289
Lot No. A301-041A-T-1		

APPLICATIONS	WB
SPECIES REACTIVITY	Human
AMOUNT	10 µl
CONCENTRATION	1000 µg/ml
STORAGE/SHELF LIFE	2 – 8°C / 1 year from date of receipt
PHYSICAL STATE	Liquid
BUFFER	Tris-citrate/phosphate buffer, pH 7 to 8 containing 0.09% Sodium Azide
ISOTYPE	IgG
ORIGIN	USA
PRODUCTION PROCEDURES	Antibody was affinity purified using an epitope specific to ARID1A/BAF250 immobilized on solid support. The epitope recognized by A301-041A-T maps to a region between residue 750 and 800 of human AT rich interactive domain 1A (BRG1-associated factor 250kD) using the numbering given in entry NP_006006.3 (GeneID 8289).
APPLICATIONS	Centrifuge tube to remove product from lid. Optimal working dilutions should be determined experimentally by the investigator. Prepare working dilution immediately before use. Western Blot 1:2,000 – 1:10,000 Immunoprecipitation Not recommended
ADDITIONAL INFO	https://www.bethyl.com/product/A301-041A-T Use the link above to view SDS, a current list of citations, and other product specific information.

This document certifies that this product has met all of the quality control standards defined by Bethyl Laboratories, Inc.
Michael Spencer, PhD Date: June 6, 2022

**Detection of human ARID1A by western blot. *Samples:***

Whole cell lysate (5, 15 and 50 µg) from HeLa cells.

Antibody: Affinity purified rabbit anti-ARID1A antibody

A301-041A used for WB at 0.1 µg/ml. *Detection:*

Chemiluminescence with an exposure time of 10 seconds.