



SZABO SCANDIC

Part of Europa Biosite

Produktinformation



Forschungsprodukte & Biochemikalien



Zellkultur & Verbrauchsmaterial



Diagnostik & molekulare Diagnostik



Laborgeräte & Service

Weitere Information auf den folgenden Seiten!
See the following pages for more information!



Lieferung & Zahlungsart

siehe unsere [Liefer- und Versandbedingungen](#)

Zuschläge

- Mindermengenzuschlag
- Trockeneiszuschlag
- Gefahrgutzuschlag
- Expressversand

SZABO-SCANDIC HandelsgmbH

Quellenstraße 110, A-1100 Wien

T. +43(0)1 489 3961-0

F. +43(0)1 489 3961-7

mail@szabo-scandic.com

www.szabo-scandic.com

[linkedin.com/company/szaboscandic](https://www.linkedin.com/company/szaboscandic) 

CRSP2/DRIP150 Antibody

Rabbit Polyclonal

Antigen Affinity Purified

RefSeq ID NP_004220.2

Catalog No. A301-044A

Uniprot ID O60244

Lot No. 2

GeneID 9282

APPLICATIONS	WB, IP
SPECIES REACTIVITY	Human
AMOUNT	100 µl
CONCENTRATION	1000 µg/ml
STORAGE/SHELF LIFE	2 – 8°C / 1 year from date of receipt
PHYSICAL STATE	Liquid
BUFFER	Tris-citrate/phosphate buffer, pH 7 to 8 containing 0.09% Sodium Azide
ISOTYPE	IgG
ORIGIN	USA
PRODUCTION PROCEDURES	Antibody was affinity purified using an epitope specific to CRSP2/DRIP150 immobilized on solid support.

The epitope recognized by A301-044A maps to a region between residue 1 and 50 of human cofactor required for Sp1 transcriptional activation, subunit 2 (vitamin D receptor-interacting protein complex component DRIP150) using the numbering given in entry NP_004220.2 (GeneID 9282).

Immunoglobulin concentration was determined using Beer's Law where 1mg/mL IgG has an A280 of 1.4.

APPLICATIONS Centrifuge tube to remove product from lid. Optimal working dilutions should be determined experimentally by the investigator. Prepare working dilution immediately before use.

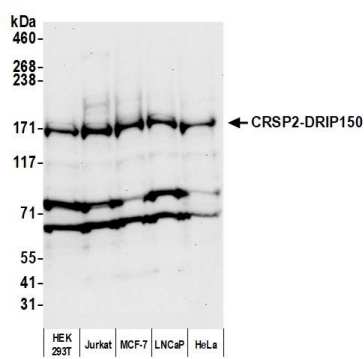
Western Blot 1:1000 – 1:5000

Immunoprecipitation 6 µg/mg lysate

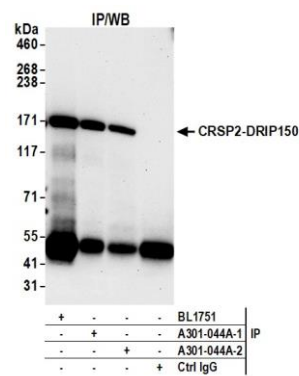
ADDITIONAL INFO <https://www.fortislife.com/p/A301-044A>

Use the link above to view SDS, a current list of citations, and other product specific information.

This document certifies that this product has met all of the quality control standards defined by Bethyl Laboratories, Inc.
Michael Spencer, PhD Date: March 19, 2024



Detection of human CRSP2-DRIP150 by western blot.
Samples: Whole cell lysate (50 µg) from HEK293T, Jurkat, MCF-7, LNCaP, and HeLa cells prepared using NETN lysis buffer. *Antibody:* Affinity purified rabbit anti-CRSP2-DRIP150 antibody (A301-044A lot 2) used for WB at 1 µg/ml. *Detection:* Chemiluminescence with an exposure time of 3 minutes.



Detection of human CRSP2-DRIP150 by western blot of immunoprecipitates. *Samples:* Whole cell lysate (1.0 mg per IP reaction; 20% of IP loaded) from MCF-7 cells prepared using NETN lysis buffer. *Antibody:* Affinity purified rabbit anti-CRSP2-DRIP150 antibody (A301-044A lot 2) used for IP at 6 µg per reaction. CRSP2-DRIP150 was also immunoprecipitated by a previous lot of this antibody (A301-044A lot 1) and a second antibody against a different epitope of CRSP2-DRIP150 (BL1751). For blotting immunoprecipitated CRSP2-DRIP150, A301-044A was used at 1 µg/ml. *Detection:* Chemiluminescence with an exposure time of 3 minutes.