



SZABO SCANDIC

Part of Europa Biosite

Produktinformation



Forschungsprodukte & Biochemikalien



Zellkultur & Verbrauchsmaterial



Diagnostik & molekulare Diagnostik



Laborgeräte & Service

Weitere Information auf den folgenden Seiten!
See the following pages for more information!



Lieferung & Zahlungsart

siehe unsere [Liefer- und Versandbedingungen](#)

Zuschläge

- Mindermengenzuschlag
- Trockeneiszuschlag
- Gefahrgutzuschlag
- Expressversand

SZABO-SCANDIC HandelsgmbH

Quellenstraße 110, A-1100 Wien

T. +43(0)1 489 3961-0

F. +43(0)1 489 3961-7

mail@szabo-scandic.com

www.szabo-scandic.com

[linkedin.com/company/szaboscandic](https://www.linkedin.com/company/szaboscandic) 

TRIM33/TIF1gamma Antibody

Rabbit Polyclonal

Antigen Affinity Purified

Protein ID NP_056990.3

Catalog No. A301-058A

GeneID 51592

Lot No. A301-058A-1

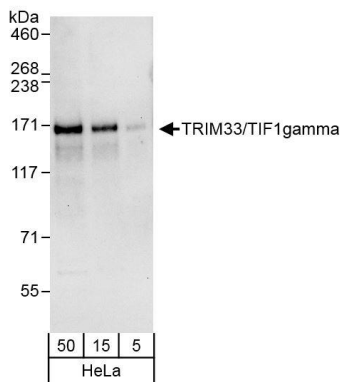


APPLICATIONS	WB				
SPECIES REACTIVITY	Human				
PRESUMED REACTIVITY	Based on 100% sequence identity, this antibody is predicted to react with Mouse				
AMOUNT	100 µl				
CONCENTRATION	200 µg/ml				
STORAGE/SHELF LIFE	2 – 8° C / 1 year from date of receipt				
PHYSICAL STATE	Liquid				
BUFFER	Tris-buffered Saline containing 0.1% BSA and 0.09% Sodium Azide				
ISOTYPE	IgG				
ORIGIN	USA				
PRODUCTION PROCEDURES	<p>Antibody was affinity purified using an epitope specific to TRIM33/TIF1gamma immobilized on solid support.</p> <p>The epitope recognized by A301-058A maps to a region between residue 1 to 50 of human tripartite motif-containing 33 (transcriptional intermediary factor 1 gamma) using the numbering given in entry NP_056990.3 (GeneID 51592).</p> <p>Immunoglobulin concentration was determined by extinction coefficient: absorbance at 280 nm of 1.4 equals 1.0 mg of IgG.</p>				
APPLICATIONS	<p>Centrifuge tube to remove product from lid. Optimal working dilutions should be determined experimentally by the investigator. Prepare working dilution immediately before use.</p> <table><tr><td>Western Blot</td><td>1:2,000 – 1:10,000</td></tr><tr><td>Immunoprecipitation</td><td>Not recommended. Use rabbit anti-TRIM33/TIF1gamma antibody A301-059A or A301-060A.</td></tr></table>	Western Blot	1:2,000 – 1:10,000	Immunoprecipitation	Not recommended. Use rabbit anti-TRIM33/TIF1gamma antibody A301-059A or A301-060A.
Western Blot	1:2,000 – 1:10,000				
Immunoprecipitation	Not recommended. Use rabbit anti-TRIM33/TIF1gamma antibody A301-059A or A301-060A.				
APPLICATION NOTES	Western blot of lysates performed using standard western blot reagents and 4-8% SDS-PAGE.				
ADDITIONAL INFO	<p>https://www.bethyl.com/product/A301-058A</p> <p>Use the link above to view SDS, a current list of citations, and other product specific information.</p>				

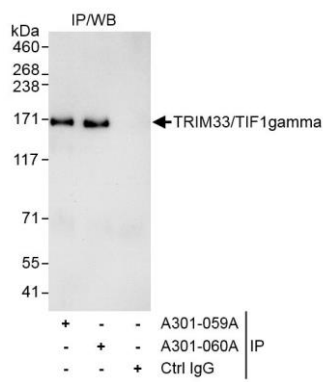
This document certifies that this product has met all of the quality control standards defined by Bethyl Laboratories, Inc.

Eric McIntush, PhD | Chief Scientific Officer

Date: October 17, 2019



Detection of human TRIM33/TIF1gamma by western blot.
Samples: Whole cell lysate (5, 15 and 50 µg) from HeLa cells. *Antibodies:* Affinity purified rabbit anti-TRIM33/TIF1gamma antibody A301-058A (lot A301-058A-1) used for WB at 0.04 µg/ml. *Detection:* Chemiluminescence with exposure time of 30 seconds.



Detection of human TRIM33/TIF1gamma by western blot of immunoprecipitates. *Samples:* Whole cell lysate (1 mg for IP, 20% of IP loaded) from HeLa cells. *Antibodies:* Affinity purified rabbit anti-TRIM33/TIF1gamma antibody A301-058A (lot A301-058A-1) used for WB at 0.1 µg/ml. TRIM33/TIF1gamma was immunoprecipitated by rabbit anti-TRIM33/TIF1gamma antibodies A301-059A and A301-060A, which recognize downstream epitopes. *Detection:* Chemiluminescence with exposure time of 30 seconds.