



SZABO SCANDIC

Part of Europa Biosite

Produktinformation



Forschungsprodukte & Biochemikalien



Zellkultur & Verbrauchsmaterial



Diagnostik & molekulare Diagnostik



Laborgeräte & Service

Weitere Information auf den folgenden Seiten!
See the following pages for more information!



Lieferung & Zahlungsart

siehe unsere [Liefer- und Versandbedingungen](#)

Zuschläge

- Mindermengenzuschlag
- Trockeneiszuschlag
- Gefahrgutzuschlag
- Expressversand

SZABO-SCANDIC HandelsgmbH

Quellenstraße 110, A-1100 Wien

T. +43(0)1 489 3961-0

F. +43(0)1 489 3961-7

mail@szabo-scandic.com

www.szabo-scandic.com

[linkedin.com/company/szaboscandic](https://www.linkedin.com/company/szaboscandic) 

KIF13A Antibody

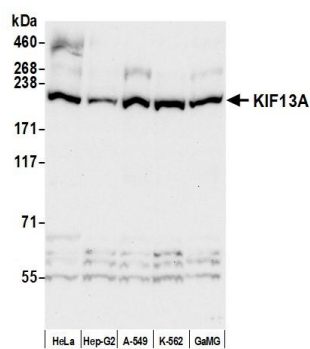
Rabbit Polyclonal

Antigen Affinity Purified	RefSeq ID	NP_071396.3
Catalog No. A301-077A	Uniprot ID	Q9H1H9
Lot No. 2	GeneID	63971

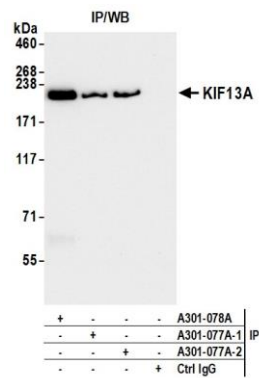
APPLICATIONS	WB, IP
SPECIES REACTIVITY	Human
AMOUNT	100 µl
CONCENTRATION	1000 µg/ml
STORAGE/SHELF LIFE	2 – 8°C / 1 year from date of receipt
PHYSICAL STATE	Liquid
BUFFER	Tris–citrate/phosphate buffer, pH 7 to 8 containing 0.09% Sodium Azide
ISOTYPE	IgG
ORIGIN	USA
PRODUCTION PROCEDURES	<p>Antibody was affinity purified using an epitope specific to KIF13A immobilized on solid support.</p> <p>The epitope recognized by A301-077A maps to a region between residue 1675 and 1725 of human kinesin family member 13A using the numbering given in entry NP_071396.3 (GeneID 63971).</p> <p>Immunoglobulin concentration was determined using Beer’s Law where 1 mg/mL IgG has an A280 of 1.4.</p>
APPLICATIONS	<p>Centrifuge tube to remove product from lid. Optimal working dilutions should be determined experimentally by the investigator. Prepare working dilution immediately before use.</p> <p>Western Blot 1:2000 – 1:10,000 (3–8% Tris–acetate gel recommended)</p> <p>Immunoprecipitation 6 µg/mg lysate</p>
ADDITIONAL INFO	<p>https://www.fortislife.com/p/A301-077A</p> <p>Use the link above to view SDS, a current list of citations, and other product specific information.</p>

This document certifies that this product has met all of the quality control standards defined by Bethyl Laboratories, Inc.
Michael Spencer, PhD

Date: July 24, 2024



Detection of human KIF13A by western blot. *Samples:* Whole cell lysate (50 µg) from HeLa, Hep-G2, A-549, K-562, and GaMG cells prepared using NETN lysis buffer. *Antibody:* Affinity purified rabbit anti-KIF13A antibody (A301-077A) used for WB at 1 µg/ml. *Detection:* Chemiluminescence with an exposure time of 75 seconds.



Detection of human KIF13A by western blot of immunoprecipitates. *Samples:* Whole cell lysate (1.0 mg per IP reaction; 20% of IP loaded) from K-562 cells prepared using NETN lysis buffer. *Antibody:* Affinity purified rabbit anti-KIF13A antibody (A301-077A) used for IP at 6 µg per reaction. KIF13A was also immunoprecipitated by a previous lot of this antibody (A301-077A lot 1) and a second antibody against a different epitope of KIF13A (A301-078A). For blotting immunoprecipitated KIF13A, A301-077A was used at 1 µg/ml. *Detection:* Chemiluminescence with an exposure time of 30 seconds.