



SZABO SCANDIC

Part of Europa Biosite

Produktinformation



Forschungsprodukte & Biochemikalien



Zellkultur & Verbrauchsmaterial



Diagnostik & molekulare Diagnostik



Laborgeräte & Service

Weitere Information auf den folgenden Seiten!
See the following pages for more information!



Lieferung & Zahlungsart

siehe unsere [Liefer- und Versandbedingungen](#)

Zuschläge

- Mindermengenzuschlag
- Trockeneiszuschlag
- Gefahrgutzuschlag
- Expressversand

SZABO-SCANDIC HandelsgmbH

Quellenstraße 110, A-1100 Wien

T. +43(0)1 489 3961-0

F. +43(0)1 489 3961-7

mail@szabo-scandic.com

www.szabo-scandic.com

[linkedin.com/company/szaboscandic](https://www.linkedin.com/company/szaboscandic)



CHD4 Antibody

Rabbit Polyclonal

Antigen Affinity Purified

Protein ID NP_001264.2

Catalog No. A301-081A-T

GeneID 1108

Lot No. A301-081A-T-6

APPLICATIONS	WB, IP, ChIP-Seq
PRESUMED REACTIVITY	Based on 100% sequence identity, this antibody is predicted to react with Human and Mouse
AMOUNT	10 µl
CONCENTRATION	1000 µg/ml
STORAGE/SHELF LIFE	2 – 8°C / 1 year from date of receipt
PHYSICAL STATE	Liquid
BUFFER	Tris-citrate/phosphate buffer, pH 7 to 8 containing 0.09% Sodium Azide
ISOTYPE	IgG
ORIGIN	USA
PRODUCTION PROCEDURES	Antibody was affinity purified using an epitope specific to CHD4 immobilized on solid support.

The epitope recognized by A301-081A-T maps to a region between residue 25 and 75 of human chromodomain helicase DNA binding protein 4 (Mi2 autoantigen 218 kDa protein) using the numbering given in entry NP_001264.2 (GeneID 1108).

APPLICATIONS Centrifuge tube to remove product from lid. Optimal working dilutions should be determined experimentally by the investigator. Prepare working dilution immediately before use.

Western Blot 1:10,000 – 1:25,000

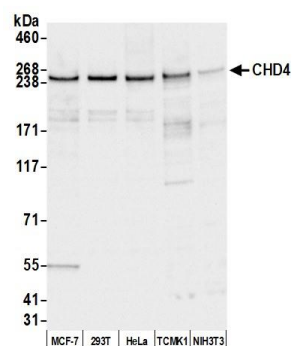
Immunoprecipitation 2 – 10 µg/mg lysate

ChIP-Seq ChIP-Seq 10 µg as per Ram O et al., Cell. 2011 Dec 23;147(7):1628–39. Previous lots of this antibody have performed in this application.

ADDITIONAL INFO <https://www.fortislife.com/p/A301-081A-T>

Use the link above to view SDS, a current list of citations, and other product specific information.

This document certifies that this product has met all of the quality control standards defined by Bethyl Laboratories, Inc.
Michael Spencer, PhD Date: August 8, 2022

**Detection of human and mouse CHD4 by western blot.**

Samples: Whole cell lysate (50 µg) from MCF-7, HEK293T, HeLa, TCMK-1, and NIH 3T3 cells prepared using NETN lysis buffer. *Antibody:* Affinity purified rabbit anti-CHD4 antibody A301-081A-T (lot A301-081A-T-6) used for WB at 1:1000. *Detection:* Chemiluminescence with an exposure time of 1 second.