



SZABO SCANDIC

Part of Europa Biosite

Produktinformation



Forschungsprodukte & Biochemikalien



Zellkultur & Verbrauchsmaterial



Diagnostik & molekulare Diagnostik



Laborgeräte & Service

Weitere Information auf den folgenden Seiten!
See the following pages for more information!



Lieferung & Zahlungsart

siehe unsere [Liefer- und Versandbedingungen](#)

Zuschläge

- Mindermengenzuschlag
- Trockeneiszuschlag
- Gefahrgutzuschlag
- Expressversand

SZABO-SCANDIC Handels GmbH

Quellenstraße 110, A-1100 Wien

T. +43(0)1 489 3961-0

F. +43(0)1 489 3961-7

mail@szabo-scandic.com

www.szabo-scandic.com

[linkedin.com/company/szaboscandic](https://www.linkedin.com/company/szaboscandic) 

CHD4 Antibody

Rabbit Polyclonal

Antigen Affinity Purified

Protein ID NP_001264.2

Catalog No. A301-082A-T

GeneID 1108

Lot No. A301-082A-T-1

APPLICATIONS	WB, IP
SPECIES REACTIVITY	Human, Mouse
AMOUNT	10 µl
CONCENTRATION	200 µg/ml
STORAGE/SHELF LIFE	2 – 8°C / 1 year from date of receipt
PHYSICAL STATE	Liquid
BUFFER	Tris-buffered Saline containing 0.1% BSA and 0.09% Sodium Azide
ISOTYPE	IgG
ORIGIN	USA
PRODUCTION PROCEDURES	Antibody was affinity purified using an epitope specific to CHD4 immobilized on solid support.

The epitope recognized by A301-082A-T maps to a region between residue 250 and 300 of human chromodomain helicase DNA binding protein 4 (Mi2 autoantigen 218 kDa protein) using the numbering given in entry NP_001264.2 (GeneID 1108).

APPLICATIONS Centrifuge tube to remove product from lid. Optimal working dilutions should be determined experimentally by the investigator. Prepare working dilution immediately before use.

Western Blot 1:2,000 – 1:10,000

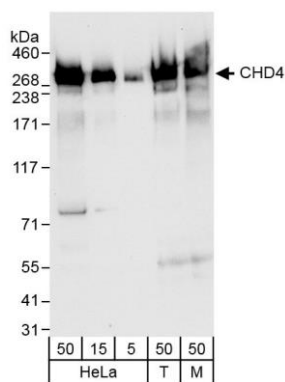
Immunoprecipitation 2 – 6 µg/mg lysate

ADDITIONAL INFO <https://www.bethyl.com/product/A301-082A-T>

Use the link above to view SDS, a current list of citations, and other product specific information.

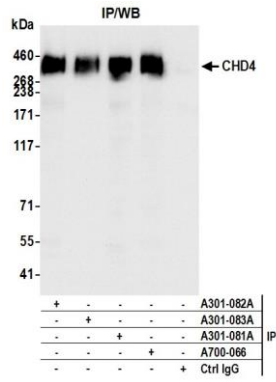
IP-western blot protocol: https://www.bethyl.com/content/protocol_IP_WB

This document certifies that this product has met all of the quality control standards defined by Bethyl Laboratories, Inc.
Michael Spencer, PhD Date: June 6, 2022



Detection of human and mouse CHD4 by western blot.

Samples: Whole cell lysate from HeLa (5, 15 and 50 µg, HEK293T (T; 50 µg) and mouse NIH 3T3 (M; 50 µg) cells. *Antibodies:* Affinity purified rabbit anti-CHD4 antibody A301-082A (lot A301-082A-1) used at 0.04 µg/ml. *Detection:* Chemiluminescence with exposure times of 10 seconds.



Detection of human CHD4 by western blot of immunoprecipitates.

Samples: Whole cell lysate (1.0 mg per IP reaction; 20% of IP loaded) from HeLa cells. *Antibodies:* Affinity purified rabbit anti-CHD4 antibody A301-082A (lot A301-082A-1) used for IP at 6 µg per reaction. CHD4 was also immunoprecipitated by rabbit anti-CHD4 antibodies (A301-081A, A301-083A), and rabbit anti-CHD4 recombinant monoclonal antibody [BLR066G] (A700-066). For blotting immunoprecipitated CHD4, A700-066 was used at 1:1000. *Detection:* Chemiluminescence with an exposure time of 1 second.