



SZABO SCANDIC

Part of Europa Biosite

Produktinformation



Forschungsprodukte & Biochemikalien



Zellkultur & Verbrauchsmaterial



Diagnostik & molekulare Diagnostik



Laborgeräte & Service

Weitere Information auf den folgenden Seiten!
See the following pages for more information!



Lieferung & Zahlungsart

siehe unsere [Liefer- und Versandbedingungen](#)

Zuschläge

- Mindermengenzuschlag
- Trockeneiszuschlag
- Gefahrgutzuschlag
- Expressversand

SZABO-SCANDIC HandelsgmbH

Quellenstraße 110, A-1100 Wien

T. +43(0)1 489 3961-0

F. +43(0)1 489 3961-7

mail@szabo-scandic.com

www.szabo-scandic.com

[linkedin.com/company/szaboscandic](https://www.linkedin.com/company/szaboscandic) 

UBE1 Antibody

Rabbit Polyclonal

Antigen Affinity Purified

Protein ID NP_003325.2

Catalog No. A301-128A

GeneID 7317

Lot No. A301-128A-1



APPLICATIONS	WB, IHC
SPECIES REACTIVITY	Human, Mouse
PRESUMED REACTIVITY	Based on 100% sequence identity, this antibody is predicted to react with Rat, Bovine and Rabbit
AMOUNT	100 µl
CONCENTRATION	200 µg/ml
STORAGE/SHELF LIFE	2 – 8° C / 1 year from date of receipt
PHYSICAL STATE	Liquid
BUFFER	Tris-buffered Saline containing 0.1% BSA and 0.09% Sodium Azide
ISOTYPE	IgG
ORIGIN	USA
PRODUCTION PROCEDURES	Antibody was affinity purified using an epitope specific to UBE1 immobilized on solid support.

The epitope recognized by A301-128A maps to a region between residue 1008 and 1058 of human ubiquitin-activating enzyme E1 using the numbering given in entry NP_003325.2 (GeneID 7317).

Immunoglobulin concentration was determined by extinction coefficient: absorbance at 280 nm of 1.4 equals 1.0 mg of IgG.

APPLICATIONS Centrifuge tube to remove product from lid. Optimal working dilutions should be determined experimentally by the investigator. Prepare working dilution immediately before use.

Western Blot 1:2,000 – 1:10,000

Immunoprecipitation Not recommended. Use rabbit anti-UBE1 antibody A301-125A.

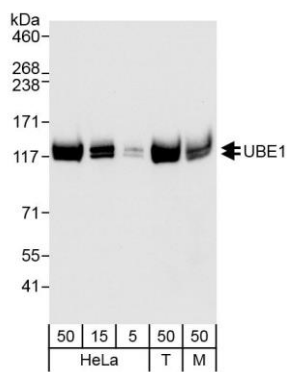
Immunohistochemistry 1:100 – 1:500. Epitope retrieval with citrate buffer pH 6.0 is recommended for FFPE tissue sections.

IHC HUMAN CONTROLS Breast Carcinoma, Ovarian Carcinoma, Prostate Carcinoma

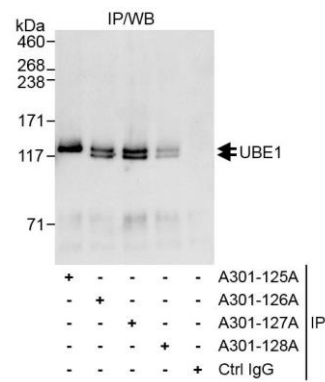
ADDITIONAL INFO <https://www.bethyl.com/product/A301-128A>

Use the link above to view SDS, a current list of citations, and other product specific information.

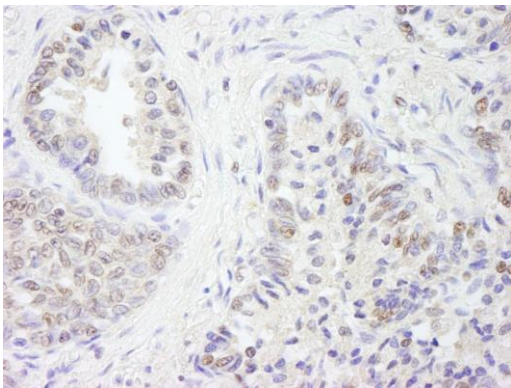
This document certifies that this product has met all of the quality control standards defined by Bethyl Laboratories, Inc.
Eric McIntush, PhD | Chief Scientific Officer Date: April 24, 2020



Detection of human and mouse UBE1 by western blot.
Samples: Whole cell lysate from HeLa (5, 15 and 50 µg), HEK293T (T; 50 µg) and mouse NIH 3T3 (M; 50 µg) cells.
Antibodies: Affinity purified rabbit anti-UBE1 antibody A301-128A (lot A301-128A-1) used for WB at 0.04 µg/ml.
Detection: Chemiluminescence with exposure time of 10 seconds.



Detection of human UBE1 by western blot of immunoprecipitates. *Samples:* Whole cell lysate (1 mg for IP, 20% of IP loaded) from HeLa cells. *Antibodies:* Affinity purified rabbit anti-UBE1 antibody A301-128A (lot A301-128A-1) used for IP at 3 µg/mg lysate. UBE1 was immunoprecipitated more efficiently by rabbit anti-UBE1 antibodies A301-125A, A301-126A and A301-127A, which recognize upstream epitopes. For blotting immunoprecipitated UBE1, A301-128A was used at 1.0 µg/ml. *Detection:* Chemiluminescence with exposure time of 10 seconds.



Detection of human UBE1 by immunohistochemistry.
Sample: FFPE section of human prostate carcinoma.
Antibody: Affinity purified rabbit anti-UBE1 (Cat. No. A301-128A lot 1) used at a dilution of 1:200 (1 µg/ml).
Detection: DAB