



SZABO SCANDIC

Part of Europa Biosite

Produktinformation



Forschungsprodukte & Biochemikalien



Zellkultur & Verbrauchsmaterial



Diagnostik & molekulare Diagnostik



Laborgeräte & Service

Weitere Information auf den folgenden Seiten!
See the following pages for more information!



Lieferung & Zahlungsart

siehe unsere [Liefer- und Versandbedingungen](#)

Zuschläge

- Mindermengenzuschlag
- Trockeneiszuschlag
- Gefahrgutzuschlag
- Expressversand

SZABO-SCANDIC Handels GmbH

Quellenstraße 110, A-1100 Wien

T. +43(0)1 489 3961-0

F. +43(0)1 489 3961-7

mail@szabo-scandic.com

www.szabo-scandic.com

[linkedin.com/company/szaboscandic](https://www.linkedin.com/company/szaboscandic) 

Filamin A Antibody

Rabbit Polyclonal

Antigen Affinity Purified

Protein ID NP_001447.1

Catalog No. A301-133A-T

GeneID 2316

Lot No. A301-133A-T-1

APPLICATIONS WB, IHC

SPECIES REACTIVITY Human

AMOUNT 10 µl

CONCENTRATION 200 µg/ml

STORAGE/SHELF LIFE 2 – 8°C / 1 year from date of receipt

PHYSICAL STATE Liquid

BUFFER Tris-buffered Saline containing 0.1% BSA and 0.09% Sodium Azide

ISOTYPE IgG

ORIGIN USA

PRODUCTION PROCEDURES Antibody was affinity purified using an epitope specific to Filamin A immobilized on solid support.

The epitope recognized by A301-133A-T maps to a region between residue 400 and 450 of human Filamin A using the numbering given in entry NP_001447.1 (GeneID 2316).

APPLICATIONS Centrifuge tube to remove product from lid. Optimal working dilutions should be determined experimentally by the investigator. Prepare working dilution immediately before use.

Western Blot 1:2,000 – 1:10,000

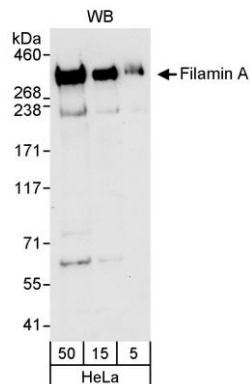
Immunoprecipitation Not recommended. Use rabbit anti-Filamin A antibody A301-134A or A301-135A.

Immunohistochemistry 1:500 – 1:2,000. Epitope retrieval with citrate buffer pH 6.0 is recommended for FFPE tissue sections.

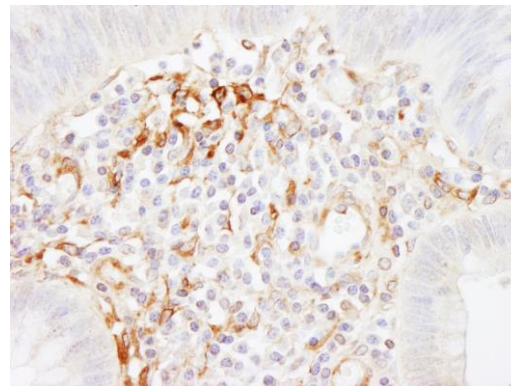
ADDITIONAL INFO <https://www.bethyl.com/product/A301-133A-T>

Use the link above to view SDS, a current list of citations, and other product specific information.

This document certifies that this product has met all of the quality control standards defined by Bethyl Laboratories, Inc.
Michael Spencer, PhD Date: June 6, 2022



Detection of human Filamin A by western blot. *Samples:* Whole cell lysate (5, 15 and 50 µg for WB) from HeLa cells. *Antibody:* Affinity purified rabbit anti-Filamin A antibody A301-133A used for WB at 0.04 µg/ml. *Detection:* Chemiluminescence with an exposure time of 30 seconds.



Detection of human Filamin A by immunohistochemistry. *Sample:* FFPE section of human colon carcinoma. *Antibody:* Affinity purified rabbit anti-Filamin A (Cat. No. A301-133A) used at a dilution of 1:1,000 (0.2 µg/ml). *Detection:* DAB