



SZABO SCANDIC

Part of Europa Biosite

Produktinformation



Forschungsprodukte & Biochemikalien



Zellkultur & Verbrauchsmaterial



Diagnostik & molekulare Diagnostik



Laborgeräte & Service

Weitere Information auf den folgenden Seiten!
See the following pages for more information!



Lieferung & Zahlungsart

siehe unsere [Liefer- und Versandbedingungen](#)

Zuschläge

- Mindermengenzuschlag
- Trockeneiszuschlag
- Gefahrgutzuschlag
- Expressversand

SZABO-SCANDIC HandelsgmbH

Quellenstraße 110, A-1100 Wien

T. +43(0)1 489 3961-0

F. +43(0)1 489 3961-7

mail@szabo-scandic.com

www.szabo-scandic.com

[linkedin.com/company/szaboscandic](https://www.linkedin.com/company/szaboscandic) 

Filamin A Antibody

Rabbit Polyclonal

Antigen Affinity Purified

Protein ID NP_001447.1

Catalog No. A301-134A

GeneID 2316

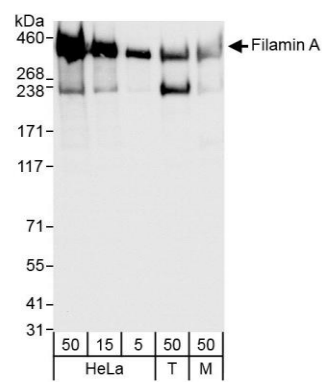
Lot No. A301-134A-1



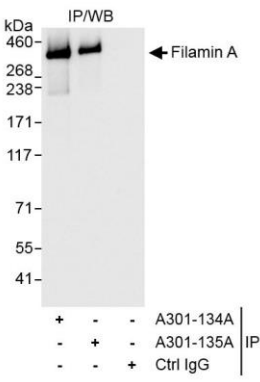
| | | | | | | | |
|------------------------------|--|--------------|--------------------|---------------------|--------------------|----------------------|--|
| APPLICATIONS | WB, IP, IHC | | | | | | |
| SPECIES REACTIVITY | Human, Mouse | | | | | | |
| AMOUNT | 100 µl | | | | | | |
| CONCENTRATION | 200 µg/ml | | | | | | |
| STORAGE/SHELF LIFE | 2 – 8° C / 1 year from date of receipt | | | | | | |
| PHYSICAL STATE | Liquid | | | | | | |
| BUFFER | Tris-buffered Saline containing 0.1% BSA and 0.09% Sodium Azide | | | | | | |
| ISOTYPE | IgG | | | | | | |
| ORIGIN | USA | | | | | | |
| PRODUCTION PROCEDURES | <p>Antibody was affinity purified using an epitope specific to Filamin A immobilized on solid support.</p> <p>The epitope recognized by A301-134A maps to a region between residue 1725 and 1775 of human Filamin A using the numbering given in entry NP_001447.1 (GeneID 2316).</p> <p>Immunoglobulin concentration was determined by extinction coefficient: absorbance at 280 nm of 1.4 equals 1.0 mg of IgG.</p> | | | | | | |
| APPLICATIONS | <p>Centrifuge tube to remove product from lid. Optimal working dilutions should be determined experimentally by the investigator. Prepare working dilution immediately before use.</p> <table><tr><td>Western Blot</td><td>1:2,000 – 1:10,000</td></tr><tr><td>Immunoprecipitation</td><td>2 – 5 µg/mg lysate</td></tr><tr><td>Immunohistochemistry</td><td>1:500 – 1:2,000. Epitope retrieval with citrate buffer pH 6.0 is recommended for FFPE tissue sections.</td></tr></table> | Western Blot | 1:2,000 – 1:10,000 | Immunoprecipitation | 2 – 5 µg/mg lysate | Immunohistochemistry | 1:500 – 1:2,000. Epitope retrieval with citrate buffer pH 6.0 is recommended for FFPE tissue sections. |
| Western Blot | 1:2,000 – 1:10,000 | | | | | | |
| Immunoprecipitation | 2 – 5 µg/mg lysate | | | | | | |
| Immunohistochemistry | 1:500 – 1:2,000. Epitope retrieval with citrate buffer pH 6.0 is recommended for FFPE tissue sections. | | | | | | |
| APPLICATION NOTES | Western blot of immunoprecipitates performed using Normal Pig Serum (Cat. No. S100-020), Goat anti-Rabbit Light Chain HRP Conjugate (Cat. No. A120-113P) and 4-8% SDS-PAGE (link to IP-western blot protocol in Additional Info section below). | | | | | | |
| ADDITIONAL INFO | <p>Western blot of lysates performed using standard western blot reagents and 4-8% SDS-PAGE.</p> <p>https://www.bethyl.com/product/A301-134A</p> <p>Use the link above to view SDS, a current list of citations, and other product specific information.</p> <p>IP-western blot protocol https://www.bethyl.com/content/protocol_IP_WB</p> | | | | | | |

This document certifies that this product has met all of the quality control standards defined by Bethyl Laboratories, Inc.
Eric McIntush, PhD | Chief Scientific Officer

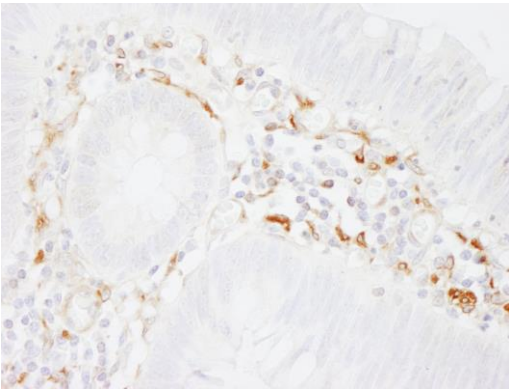
Date: October 18, 2019



Detection of human and mouse Filamin A by western blot. *Samples:* Whole cell lysate from HeLa (5, 15 and 50 µg), HEK293T (T; 50 µg) and mouse NIH 3T3 (M; 50 µg) cells. *Antibodies:* Affinity purified rabbit anti-Filamin A antibody A301-134A (lot A301-134A-1) used for WB at 0.04 µg/ml. *Detection:* Chemiluminescence with exposure time of 1 second.



Detection of human Filamin A by western blot of immunoprecipitates. *Samples:* Whole cell lysate (1 mg for IP, 20% of IP loaded) from HeLa cells. *Antibodies:* Affinity purified rabbit anti-Filamin A antibody A301-134A (lot A301-134A-1) used for IP at 3 µg/mg lysate. Filamin A was also immunoprecipitated by rabbit anti-Filamin A antibody A301-135A, which recognizes an upstream epitope. For blotting immunoprecipitated Filamin A, A301-134A was used at 0.1 µg/ml. *Detection:* Chemiluminescence with exposure time of 1 second.



Detection of human Filamin A by immunohistochemistry. *Sample:* FFPE section of human colon carcinoma. *Antibody:* Affinity purified rabbit anti-Filamin A (Cat. No. A301-134A lot 1) used at a dilution of 1:1,000 (0.2µg/ml). *Detection:* DAB