



SZABO SCANDIC

Part of Europa Biosite

Produktinformation



Forschungsprodukte & Biochemikalien



Zellkultur & Verbrauchsmaterial



Diagnostik & molekulare Diagnostik



Laborgeräte & Service

Weitere Information auf den folgenden Seiten!
See the following pages for more information!



Lieferung & Zahlungsart

siehe unsere [Liefer- und Versandbedingungen](#)

Zuschläge

- Mindermengenzuschlag
- Trockeneiszuschlag
- Gefahrgutzuschlag
- Expressversand

SZABO-SCANDIC Handels GmbH

Quellenstraße 110, A-1100 Wien

T. +43(0)1 489 3961-0

F. +43(0)1 489 3961-7

mail@szabo-scandic.com

www.szabo-scandic.com

[linkedin.com/company/szaboscandic](https://www.linkedin.com/company/szaboscandic) 

CHD1 Antibody

Rabbit Polyclonal

Antigen Affinity Purified	Protein ID	NP_001261.2
Catalog No. A301-218A-T	GeneID	1105
Lot No. A301-218A-T-1		

APPLICATIONS	WB, IP, ChIP, ChIP-chip
SPECIES REACTIVITY	Human
PRESUMED REACTIVITY	Based on 100% sequence identity, this antibody is predicted to react with Chicken
AMOUNT	10 µl
CONCENTRATION	200 µg/ml
STORAGE/SHELF LIFE	2 – 8°C / 1 year from date of receipt
PHYSICAL STATE	Liquid
BUFFER	Tris-buffered Saline containing 0.1% BSA and 0.09% Sodium Azide
ISOTYPE	IgG
ORIGIN	USA
PRODUCTION PROCEDURES	Antibody was affinity purified using an epitope specific to CHD1 immobilized on solid support.

The epitope recognized by A301-218A-T maps to a region between residue 1660 and 1710 of human chromodomain helicase DNA binding protein 1 using the numbering given in entry NP_001261.2 (GeneID 1105).

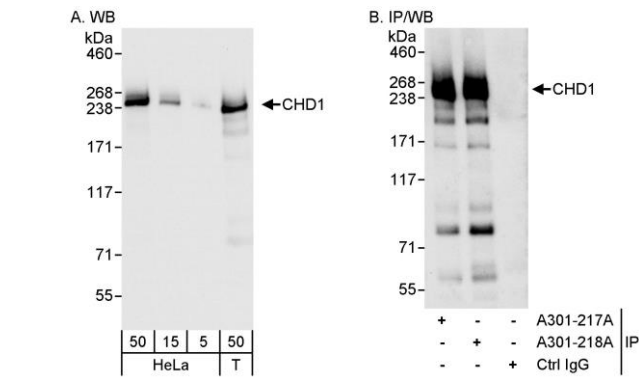
APPLICATIONS Centrifuge tube to remove product from lid. Optimal working dilutions should be determined experimentally by the investigator. Prepare working dilution immediately before use.

Western Blot	1:2,000 – 1:10,000
Immunoprecipitation	2 – 5 µg/mg lysate
ChIP	1 – 5 µg
ChIP-chip	10 µg per

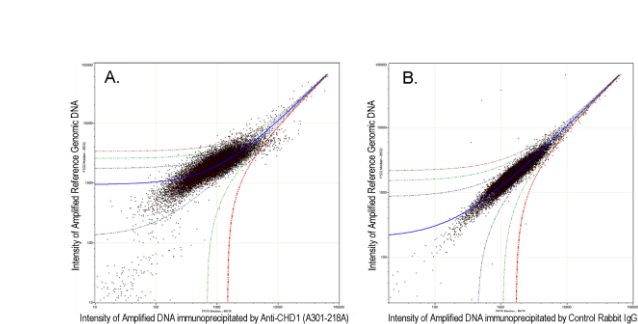
ADDITIONAL INFO <https://www.bethyl.com/product/A301-218A-T>

Use the link above to view SDS, a current list of citations, and other product specific information. IP-western blot protocol: https://www.bethyl.com/content/protocol_IP_WB

This document certifies that this product has met all of the quality control standards defined by Bethyl Laboratories, Inc.
Michael Spencer, PhD Date: June 6, 2022

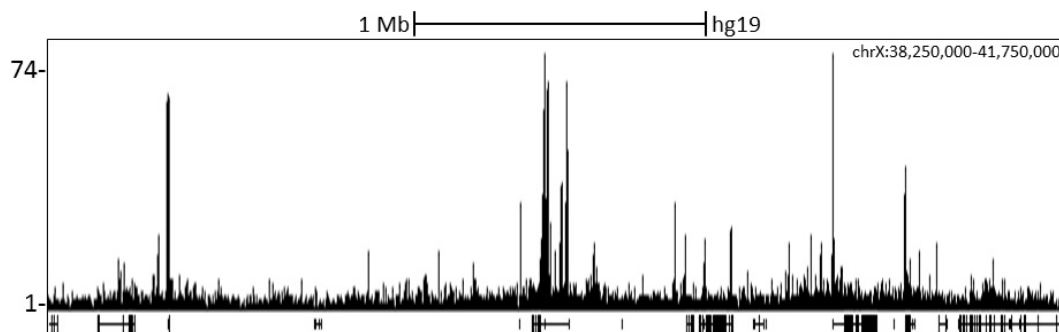


Detection of human CHD1 by western blot and immunoprecipitation. *Samples:* Whole cell lysate from HeLa (5, 15 and 50 µg for WB; 1 mg for IP, 20% of IP loaded) and HEK293T (T; 50 µg) cells. *Antibodies:* Affinity purified rabbit anti-CHD1 antibody A301-218A used for WB at 0.04 µg/ml (A) and 1 µg/ml (B) and used for IP at 3 µg/mg lysate. CHD1 was also immunoprecipitated by rabbit anti-CHD1 antibody A301-217A, which recognizes an upstream epitope. *Detection:* Chemiluminescence with exposure times of 3 seconds (A) and 10 seconds (B).



ChIP-chip scatter plot of anti-CHD1 (A301-218A) enriched DNA binding sites versus input reference DNA.

A. 10 µg of A301-218A was used to immunoprecipitate chromatin from K-562 cells according to Ren et al (Genes Dev. 2002 16: 245-256). immunoprecipitated DNA and reference DNA were amplified via ligation-mediated PCR and the products labeled with fluorescent dUTPs. The labeled ChIP and reference DNA were pooled, hybridized to a DNA microarray, and analyzed. Data points below the +3 SD curve (red line) represent significantly enriched binding sites. **B.** As a control, a similar experiment was performed using normal rabbit IgG. Compared to the anti-CHD1 ChIP, normal rabbit IgG showed little enrichment.



Localization of CHD1 Binding Sites by ChIP-seq. Chromatin from K562 cells was immunoprecipitated with anti-CHD1 antibody A301-218A and analyzed by DNA sequencing. The figure illustrates the peak distribution of CHD1 binding within a 3.5 Mb region of the human X chromosome as detected using anti-CHD1 antibody A301-218A. ChIP-seq validation performed by Diogenode, Denville, NJ.