



# SZABO SCANDIC

Part of Europa Biosite

## Produktinformation



Forschungsprodukte & Biochemikalien



Zellkultur & Verbrauchsmaterial



Diagnostik & molekulare Diagnostik



Laborgeräte & Service

Weitere Information auf den folgenden Seiten!  
See the following pages for more information!



### Lieferung & Zahlungsart

siehe unsere [Liefer- und Versandbedingungen](#)

### Zuschläge

- Mindermengenzuschlag
- Trockeneiszuschlag
- Gefahrgutzuschlag
- Expressversand

### SZABO-SCANDIC Handels GmbH

Quellenstraße 110, A-1100 Wien

T. +43(0)1 489 3961-0

F. +43(0)1 489 3961-7

[mail@szabo-scandic.com](mailto:mail@szabo-scandic.com)

[www.szabo-scandic.com](http://www.szabo-scandic.com)

[linkedin.com/company/szaboscandic](https://www.linkedin.com/company/szaboscandic) 

# CHD8 Antibody

Rabbit Polyclonal

Antigen Affinity Purified

Protein ID NP\_065971.2

Catalog No. A301-224A-T

GeneID 57680

Lot No. A301-224A-T-3

---

<b>APPLICATIONS</b>	WB, IP, IHC
<b>SPECIES REACTIVITY</b>	Human, Mouse
<b>AMOUNT</b>	10 µl
<b>CONCENTRATION</b>	1000 µg/ml
<b>STORAGE/SHELF LIFE</b>	2 – 8°C / 1 year from date of receipt
<b>PHYSICAL STATE</b>	Liquid
<b>BUFFER</b>	Tris-citrate/phosphate buffer, pH 7 to 8 containing 0.09% Sodium Azide
<b>ISOTYPE</b>	IgG
<b>ORIGIN</b>	USA
<b>PRODUCTION PROCEDURES</b>	Antibody was affinity purified using an epitope specific to CHD8 immobilized on solid support.

The epitope recognized by A301-224A-T maps to a region between residue 325 and 350 of human chromodomain helicase DNA binding protein 8 using the numbering given in entry NP\_065971.2 (GeneID 57680).

**APPLICATIONS** Centrifuge tube to remove product from lid. Optimal working dilutions should be determined experimentally by the investigator. Prepare working dilution immediately before use.

Western Blot 1:2,000 – 1:10,000

Immunoprecipitation 2 – 10 µg/mg lysate

Immunohistochemistry 1:1,000 to 1:5,000. Epitope retrieval with citrate buffer pH6.0 is recommended for FFPE tissue sections.

**ADDITIONAL INFO** <https://www.bethyl.com/product/A301-224A-T>

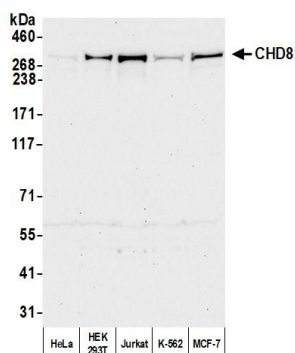
Use the link above to view SDS, a current list of citations, and other product specific information.

IP-western blot protocol: [https://www.bethyl.com/content/protocol\\_IP\\_WB](https://www.bethyl.com/content/protocol_IP_WB)

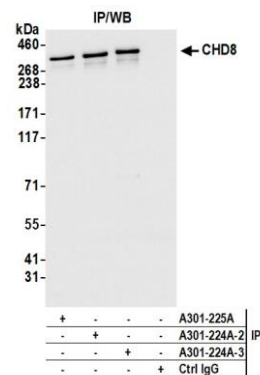
This document certifies that this product has met all of the quality control standards defined by Bethyl Laboratories, Inc.

Michael Spencer, PhD

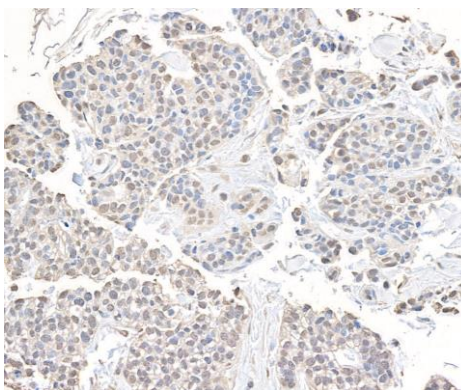
Date: June 6, 2022



**Detection of human CHD8 by western blot.** *Samples:* Whole cell lysate (50 µg) from HeLa, HEK293T, Jurkat, K-562, and MCF-7 cells prepared using NETN lysis buffer. *Antibody:* Affinity purified rabbit anti-CHD8 antibody (A301-224A lot 3) used for WB at 0.1 µg/ml. *Detection:* Chemiluminescence with an exposure time of 30 seconds.



**Detection of human CHD8 by western blot of immunoprecipitates.** *Samples:* Whole cell lysate (1.0 mg per IP reaction; 20% of IP loaded) from HEK293T cells prepared using NETN lysis buffer. *Antibodies:* Affinity purified rabbit anti-CHD8 antibody (A301-224A lot 3) used for IP at 6 µg per reaction. CHD8 was also immunoprecipitated by a previous lot of this antibody (A301-224A lot 2) and another antibody against a different epitope of CHD8 (A301-225A). For blotting immunoprecipitated CHD8, A301-224A was used at 0.1 µg/ml. *Detection:* Chemiluminescence with an exposure time of 1 second.



**Detection of human CHD8 by immunohistochemistry.**

*Sample:* FFPE section of human breast carcinoma.

*Antibody:* Affinity purified rabbit anti-CHD8 (Cat. No. A301-224A Lot3) used at a dilution of 1:5,000 (0.2µg/ml).

*Detection:* DAB