



SZABO SCANDIC

Part of Europa Biosite

Produktinformation



Forschungsprodukte & Biochemikalien



Zellkultur & Verbrauchsmaterial



Diagnostik & molekulare Diagnostik



Laborgeräte & Service

Weitere Information auf den folgenden Seiten!
See the following pages for more information!



Lieferung & Zahlungsart

siehe unsere [Liefer- und Versandbedingungen](#)

Zuschläge

- Mindermengenzuschlag
- Trockeneiszuschlag
- Gefahrgutzuschlag
- Expressversand

SZABO-SCANDIC Handels GmbH

Quellenstraße 110, A-1100 Wien

T. +43(0)1 489 3961-0

F. +43(0)1 489 3961-7

mail@szabo-scandic.com

www.szabo-scandic.com

[linkedin.com/company/szaboscandic](https://www.linkedin.com/company/szaboscandic) 

GTF3C3/TFIIIC102 Antibody

Rabbit Polyclonal

Antigen Affinity Purified

Protein ID NP_036218.1

Catalog No. A301-237A

GeneID 9330

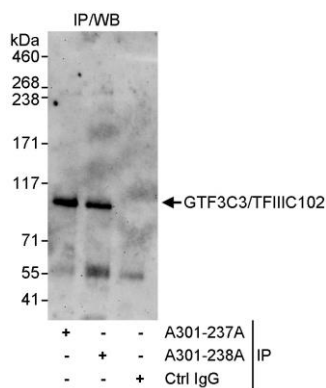
Lot No. A301-237A-1



APPLICATIONS	IP				
SPECIES REACTIVITY	Human				
AMOUNT	100 µl				
CONCENTRATION	1000 µg/ml				
STORAGE/SHELF LIFE	2 – 8° C / 1 year from date of receipt				
PHYSICAL STATE	Liquid				
BUFFER	Tris-citrate/phosphate buffer, pH 7 to 8 containing 0.09% Sodium Azide				
ISOTYPE	IgG				
ORIGIN	USA				
PRODUCTION PROCEDURES	<p>Antibody was affinity purified using an epitope specific to GTF3C3/TFIIIC102 immobilized on solid support.</p> <p>The epitope recognized by A301-237A maps to a region between residue 100 and 150 of human general transcription factor 3C polypeptide 3 (Transcription factor IIIC 102 kDa subunit) using the numbering given in entry NP_036218.1 (GeneID 9330).</p> <p>Immunoglobulin concentration was determined by extinction coefficient: absorbance at 280 nm of 1.4 equals 1.0 mg of IgG.</p>				
APPLICATIONS	<p>Centrifuge tube to remove product from lid. Optimal working dilutions should be determined experimentally by the investigator. Prepare working dilution immediately before use.</p> <table><tr><td>Western Blot</td><td>Not recommended. Use rabbit anti-GTF3C3/TFIIIC102 antibody A301-238A.</td></tr><tr><td>Immunoprecipitation</td><td>2 – 5 µg/mg lysate</td></tr></table>	Western Blot	Not recommended. Use rabbit anti-GTF3C3/TFIIIC102 antibody A301-238A.	Immunoprecipitation	2 – 5 µg/mg lysate
Western Blot	Not recommended. Use rabbit anti-GTF3C3/TFIIIC102 antibody A301-238A.				
Immunoprecipitation	2 – 5 µg/mg lysate				
APPLICATION NOTES	Western blot of immunoprecipitates performed using Normal Pig Serum (Cat. No. S100-020), Goat anti-Rabbit Light Chain HRP Conjugate (Cat. No. A120-113P) and 4-8% SDS-PAGE (link to IP-western blot protocol in Additional Info section below).				
ADDITIONAL INFO	<p>https://www.bethyl.com/product/A301-237A</p> <p>Use the link above to view SDS, a current list of citations, and other product specific information. IP-western blot protocol: https://www.bethyl.com/content/protocol_IP_WB</p>				

This document certifies that this product has met all of the quality control standards defined by Bethyl Laboratories, Inc.
Eric McIntush, PhD | Chief Scientific Officer

Date: June 21, 2019



Detection of human GTF3C3/TFIIIC102 by western blot of immunoprecipitates. *Samples:* Whole cell lysate (1 mg for IP, 20% of IP loaded) from HeLa cells. *Antibodies:* Affinity purified rabbit anti-GTF3C3/TFIIIC102 antibody A301-237A used for IP at 3 µg/mg lysate. GTF3C3/TFIIIC102 was also immunoprecipitated by rabbit anti-GTF3C3/TFIIIC102 antibody A301-238A, which recognizes a downstream epitope. For blotting immunoprecipitated GTF3C3/TFIIIC102, A301-238A was used at 1 µg/ml. *Detection:* Chemiluminescence with an exposure time of 3 minutes.