



SZABO SCANDIC

Part of Europa Biosite

Produktinformation



Forschungsprodukte & Biochemikalien



Zellkultur & Verbrauchsmaterial



Diagnostik & molekulare Diagnostik



Laborgeräte & Service

Weitere Information auf den folgenden Seiten!
See the following pages for more information!



Lieferung & Zahlungsart

siehe unsere [Liefer- und Versandbedingungen](#)

Zuschläge

- Mindermengenzuschlag
- Trockeneiszuschlag
- Gefahrgutzuschlag
- Expressversand

SZABO-SCANDIC HandelsgmbH

Quellenstraße 110, A-1100 Wien

T. +43(0)1 489 3961-0

F. +43(0)1 489 3961-7

mail@szabo-scandic.com

www.szabo-scandic.com

[linkedin.com/company/szaboscandic](https://www.linkedin.com/company/szaboscandic) 

GTF3C3/TFIIIC102 Antibody

Rabbit Polyclonal

Antigen Affinity Purified	Protein ID	NP_036218.1
Catalog No. A301-238A-T	GeneID	9330
Lot No. A301-238A-T-2		

APPLICATIONS	WB, IP, IHC
SPECIES REACTIVITY	Human, Mouse
AMOUNT	10 µl
CONCENTRATION	200 µg/ml
STORAGE/SHELF LIFE	2 – 8°C / 1 year from date of receipt
PHYSICAL STATE	Liquid
BUFFER	Tris-buffered Saline containing 0.1% BSA and 0.09% Sodium Azide
ISOTYPE	IgG
ORIGIN	USA
PRODUCTION PROCEDURES	Antibody was affinity purified using an epitope specific to GTF3C3/TFIIIC102 immobilized on solid support.

The epitope recognized by A301-238A-T maps to a region between residue 475 and 525 of human general transcription factor 3C polypeptide 3 (Transcription factor IIIC 102 kDa subunit) using the numbering given in entry NP_036218.1 (GeneID 9330).

APPLICATIONS Centrifuge tube to remove product from lid. Optimal working dilutions should be determined experimentally by the investigator. Prepare working dilution immediately before use.

Western Blot 1:2,000 – 1:10,000

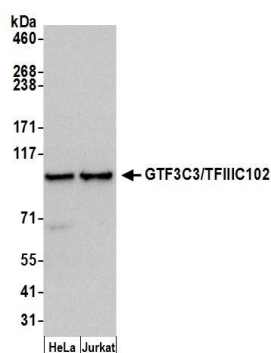
Immunoprecipitation 2 – 5 µg/mg lysate

Immunohistochemistry 1:200 – 1:1,000. Epitope retrieval with citrate buffer pH 6.0 is recommended for FFPE tissue sections.

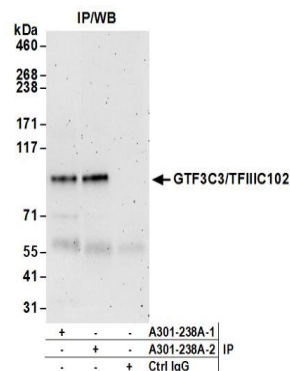
ADDITIONAL INFO <https://www.bethyl.com/product/A301-238A-T>

Use the link above to view SDS, a current list of citations, and other product specific information.
IP-western blot protocol: https://www.bethyl.com/content/protocol_IP_WB

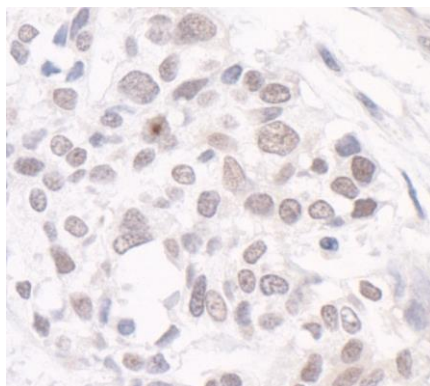
This document certifies that this product has met all of the quality control standards defined by Bethyl Laboratories, Inc.
Michael Spencer, PhD Date: June 6, 2022


Detection of human GTF3C3/TFIIIC102 by western blot.

Samples: Whole cell lysate (50 µg) from HeLa and Jurkat cells prepared using NETN lysis buffer. **Antibody:** Affinity purified rabbit anti-GTF3C3/TFIIIC102 antibody A301-238A (lot A301-238A-2) used for WB at 0.1 µg/ml. **Detection:** Chemiluminescence with an exposure time of 3 minutes.


Detection of human GTF3C3/TFIIIC102 by western blot of immunoprecipitates.

Samples: Whole cell lysate (1.0 mg per IP reaction; 20% of IP loaded) from HEK293T cells prepared using NETN lysis buffer. **Antibodies:** Affinity purified rabbit anti-GTF3C3/TFIIIC102 antibody A301-238A (lot A301-238A-2) used for IP at 3 µg per reaction. GTF3C3/TFIIIC102 was also immunoprecipitated by a previous lot of this antibody (lot A301-238A-1). For blotting immunoprecipitated GTF3C3/TFIIIC102, A301-238A was used at 1 µg/ml. **Detection:** Chemiluminescence with an exposure time of 3 minutes.



Detection of human GTF3C3/TFIIIC102 by immunohistochemistry. **Sample:** FFPE section of human breast carcinoma. **Antibody:** Affinity purified rabbit anti-GTF3C3/TFIIIC102 (Cat. No. A301-238A Lot2) used at a dilution of 1:1000 (0.2µg/ml). **Detection:** DAB