



SZABO SCANDIC

Part of Europa Biosite

Produktinformation



Forschungsprodukte & Biochemikalien



Zellkultur & Verbrauchsmaterial



Diagnostik & molekulare Diagnostik



Laborgeräte & Service

Weitere Information auf den folgenden Seiten!
See the following pages for more information!



Lieferung & Zahlungsart

siehe unsere [Liefer- und Versandbedingungen](#)

Zuschläge

- Mindermengenzuschlag
- Trockeneiszuschlag
- Gefahrgutzuschlag
- Expressversand

SZABO-SCANDIC HandelsgmbH

Quellenstraße 110, A-1100 Wien

T. +43(0)1 489 3961-0

F. +43(0)1 489 3961-7

mail@szabo-scandic.com

www.szabo-scandic.com

[linkedin.com/company/szaboscandic](https://www.linkedin.com/company/szaboscandic) 

GTF3C4/TFIIIC90 Antibody

Rabbit Polyclonal

Antigen Affinity Purified

Protein ID NP_036336.1

Catalog No. A301-241A

GeneID 9329

Lot No. A301-241A-1



APPLICATIONS	IP, IHC
SPECIES REACTIVITY	Human
AMOUNT	100 µl
CONCENTRATION	1000 µg/ml
STORAGE/SHELF LIFE	2 – 8° C / 1 year from date of receipt
PHYSICAL STATE	Liquid
BUFFER	Tris-citrate/phosphate buffer, pH 7 to 8 containing 0.09% Sodium Azide
ISOTYPE	IgG
ORIGIN	USA
PRODUCTION PROCEDURES	Antibody was affinity purified using an epitope specific to GTF3C4/TFIIIC90 immobilized on solid support.

The epitope recognized by A301-241A maps to a region between residue 625 and 675 of human general transcription factor 3C polypeptide 4 (Transcription factor IIIC 90 kDa subunit) using the numbering given in entry NP_036336.1 (GeneID 9329).

Immunoglobulin concentration was determined by extinction coefficient: absorbance at 280 nm of 1.4 equals 1.0 mg of IgG.

APPLICATIONS Centrifuge tube to remove product from lid. Optimal working dilutions should be determined experimentally by the investigator. Prepare working dilution immediately before use.

Western Blot Not recommended. Use rabbit anti-GTF3C4/TFIIIC90 antibody A301-239A.

Immunoprecipitation 2 – 5 µg/mg lysate

Immunohistochemistry 1:1,000 – 1:5,000. Epitope retrieval with Tris-EDTA pH 9.0 is recommended for FFPE tissue sections.

APPLICATION NOTES Western blot of immunoprecipitates performed using Normal Pig Serum (Cat. No. S100-020), Goat anti-Rabbit Light Chain HRP Conjugate (Cat. No. A120-113P) and 4-8% SDS-PAGE (link to IP-western blot protocol in Additional Info section below).

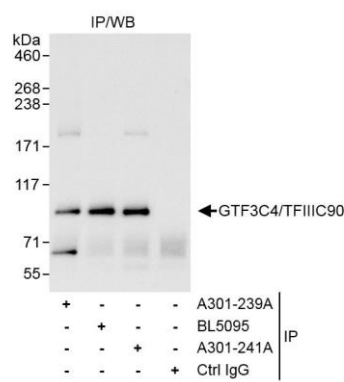
IHC HUMAN CONTROLS Anaplastic Thyroid Carcinoma, Non-Small Cell Lung Cancer, Ovarian Carcinoma, Prostate Carcinoma, Testicular Seminoma

ADDITIONAL INFO <https://www.bethyl.com/product/A301-241A>

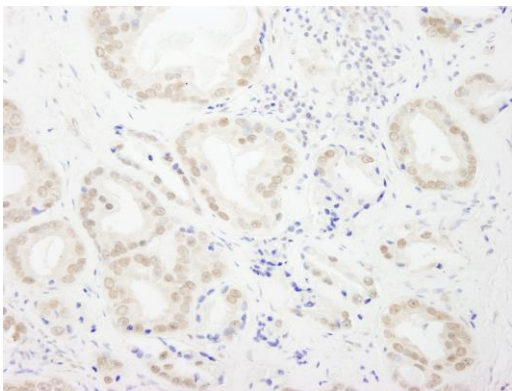
Use the link above to view SDS, a current list of citations, and other product specific information.

IP-western blot protocol: https://www.bethyl.com/content/protocol_IP_WB

This document certifies that this product has met all of the quality control standards defined by Bethyl Laboratories, Inc.
Eric McIntush, PhD | Chief Scientific Officer Date: June 21, 2019



Detection of human GTF3C4/TFIIIC90 by western blot of immunoprecipitates. *Samples:* Whole cell lysate (1 mg for IP, 20% of IP loaded) from HeLa cells. *Antibodies:* Affinity purified rabbit anti-GTF3C4/TFIIIC90 antibody A301-241A used for IP at 3 µg/mg lysate. GTF3C4/TFIIIC90 was also immunoprecipitated by rabbit anti-GTF3C4/TFIIIC90 antibodies A301-239A and BL5095, which recognize upstream epitopes. For blotting immunoprecipitated GTF3C4/TFIIIC90, A301-239A was used at 1 µg/ml. *Detection:* Chemiluminescence with an exposure time of 3 seconds.



Detection of human GTF3C4/TFIIIC90 by immunohistochemistry. *Sample:* FFPE section of human prostate carcinoma. *Antibody:* Affinity purified rabbit anti-GTF3C4/TFIIIC90 (Cat. No. A301-241A Lot1) used at a dilution of 1:5,000 (0.2µg/ml). *Detection:* DAB