



SZABO SCANDIC

Part of Europa Biosite

Produktinformation



Forschungsprodukte & Biochemikalien



Zellkultur & Verbrauchsmaterial



Diagnostik & molekulare Diagnostik



Laborgeräte & Service

Weitere Information auf den folgenden Seiten!
See the following pages for more information!



Lieferung & Zahlungsart

siehe unsere [Liefer- und Versandbedingungen](#)

Zuschläge

- Mindermengenzuschlag
- Trockeneiszuschlag
- Gefahrgutzuschlag
- Expressversand

SZABO-SCANDIC HandelsgmbH

Quellenstraße 110, A-1100 Wien

T. +43(0)1 489 3961-0

F. +43(0)1 489 3961-7

mail@szabo-scandic.com

www.szabo-scandic.com

[linkedin.com/company/szaboscandic](https://www.linkedin.com/company/szaboscandic)



GTF3C5/TFIIIC63 Antibody

Rabbit Polyclonal

Antigen Affinity Purified

Protein ID NP_036219.1

Catalog No. A301-242A

GeneID 9328

Lot No. A301-242A-2



APPLICATIONS	WB, IP, IHC
SPECIES REACTIVITY	Human, Mouse
AMOUNT	100 µl
CONCENTRATION	200 µg/ml
STORAGE/SHELF LIFE	2 – 8° C / 1 year from date of receipt
PHYSICAL STATE	Liquid
BUFFER	Tris-buffered Saline containing 0.1% BSA and 0.09% Sodium Azide
ISOTYPE	IgG
ORIGIN	USA
PRODUCTION PROCEDURES	Antibody was affinity purified using an epitope specific to GTF3C5/TFIIIC63 immobilized on solid support.

The epitope recognized by A301-242A maps to a region between residue 469 and 519 of human general transcription factor 3C polypeptide 5 (Transcription factor IIIC 63 kDa subunit) using the numbering given in entry NP_036219.1 (GeneID 9328).

Immunoglobulin concentration was determined by extinction coefficient: absorbance at 280 nm of 1.4 equals 1.0 mg of IgG.

APPLICATIONS Centrifuge tube to remove product from lid. Optimal working dilutions should be determined experimentally by the investigator. Prepare working dilution immediately before use.

Western Blot 1:2,000 – 1:10,000

Immunoprecipitation 2 – 10 µg/mg lysate

Immunohistochemistry 1:200 – 1:1,000. Epitope retrieval with citrate buffer pH 6.0 is recommended for FFPE tissue sections.

APPLICATION NOTES Western blot of immunoprecipitates performed using Normal Pig Serum (Cat. No. S100-020), Goat anti-Rabbit Light Chain HRP Conjugate (Cat. No. A120-113P) and 4-20% SDS-PAGE (link to IP-western blot protocol in Additional Info section below).

IHC HUMAN CONTROLS Western blot of lysates performed using standard western blot reagents and 4-20% SDS-PAGE. Anaplastic Thyroid Carcinoma, Breast Carcinoma, Metastatic Lymph Node, Ovarian Carcinoma, Prostate Carcinoma, Small Cell Lung Cancer, Testicular Seminoma

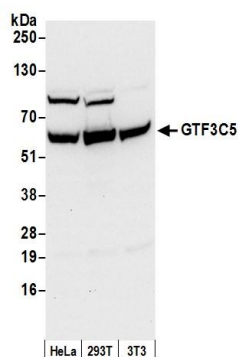
IHC MOUSE CONTROLS Colon Carcinoma CT26, Renal Cell Carcinoma, Skin, Teratoma

ADDITIONAL INFO <https://www.bethyl.com/product/A301-242A>

Use the link above to view SDS, a current list of citations, and other product specific information.

IP-western blot protocol: https://www.bethyl.com/content/protocol_IP_WB

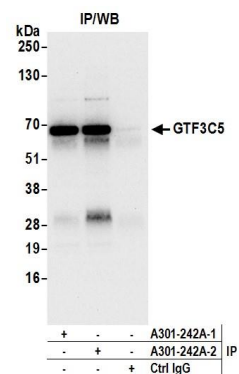
This document certifies that this product has met all of the quality control standards defined by Bethyl Laboratories, Inc.
Eric McIntush, PhD | Chief Scientific Officer Date: June 21, 2019


Detection of human and mouse GTF3C5 by western blot.

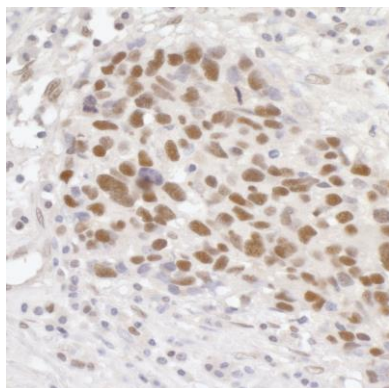
Samples: Whole cell lysate (50 µg) from HeLa, HEK293T, and mouse NIH 3T3 cells prepared using NETN lysis buffer.

Antibody: Affinity purified rabbit anti-GTF3C5 antibody A301-242A (lot A301-242A-2) used for WB at 0.1 µg/ml.

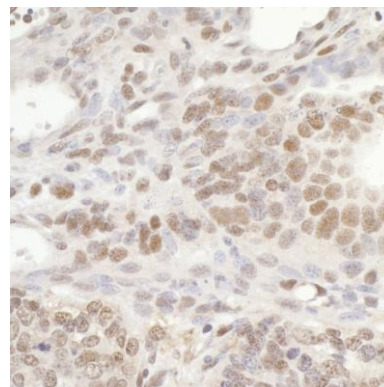
Detection: Chemiluminescence with an exposure time of 10 seconds.


Detection of human GTF3C5 by western blot of immunoprecipitates.

Samples: Whole cell lysate (0.5 or 1.0 mg per IP reaction; 20% of IP loaded) from HEK293T cells prepared using NETN lysis buffer. **Antibodies:** Affinity purified rabbit anti-GTF3C5 antibody A301-242A (lot A301-242A-2) used for IP at 6 µg per reaction. GTF3C5 was also immunoprecipitated by a previous lot of this antibody (lot A301-242A-1). For blotting immunoprecipitated GTF3C5, A301-242A was used at 0.4 µg/ml. **Detection:** Chemiluminescence with an exposure time of 10 seconds.



Detection of human GTF3C5/TFIIIC63 by immunohistochemistry. **Sample:** FFPE section of human breast carcinoma. **Antibody:** Affinity purified rabbit anti-GTF3C5/TFIIIC63 (Cat. No. A301-242A Lot2) used at a dilution of 1:200 (1 µg/ml). **Detection:** DAB



Detection of mouse GTF3C5/TFIIIC63 by immunohistochemistry. **Sample:** FFPE section of mouse teratoma. **Antibody:** Affinity purified rabbit anti-GTF3C5/TFIIIC63 (Cat. No. A301-242A Lot2) used at a dilution of 1:200 (1 µg/ml). **Detection:** DAB