



SZABO SCANDIC

Part of Europa Biosite

Produktinformation



Forschungsprodukte & Biochemikalien



Zellkultur & Verbrauchsmaterial



Diagnostik & molekulare Diagnostik



Laborgeräte & Service

Weitere Information auf den folgenden Seiten!
See the following pages for more information!



Lieferung & Zahlungsart

siehe unsere [Liefer- und Versandbedingungen](#)

Zuschläge

- Mindermengenzuschlag
- Trockeneiszuschlag
- Gefahrgutzuschlag
- Expressversand

SZABO-SCANDIC HandelsgmbH

Quellenstraße 110, A-1100 Wien

T. +43(0)1 489 3961-0

F. +43(0)1 489 3961-7

mail@szabo-scandic.com

www.szabo-scandic.com

[linkedin.com/company/szaboscandic](https://www.linkedin.com/company/szaboscandic) 

PolD3/p66 Antibody

Rabbit Polyclonal

Antigen Affinity Purified

Protein ID NP_006582.1

Catalog No. A301-244A-T

GeneID 10714

Lot No. A301-244A-T-2

APPLICATIONS WB, IP

SPECIES REACTIVITY Human

AMOUNT 10 µl

CONCENTRATION 1000 µg/ml

STORAGE/SHELF LIFE 2 – 8°C / 1 year from date of receipt

PHYSICAL STATE Liquid

BUFFER Tris-citrate/phosphate buffer, pH 7 to 8 containing 0.09% Sodium Azide

ISOTYPE IgG

ORIGIN USA

PRODUCTION PROCEDURES Antibody was affinity purified using an epitope specific to PolD3/p66 immobilized on solid support.

The epitope recognized by A301-244A-T maps to a region between residue 416 and 466 of human DNA polymerase delta, subunit 3 using the numbering given in entry NP_006582.1 (GeneID 10714).

APPLICATIONS Centrifuge tube to remove product from lid. Optimal working dilutions should be determined experimentally by the investigator. Prepare working dilution immediately before use.

Western Blot 1:2,000 – 1:10,000

Immunoprecipitation 2 – 10 µg/mg lysate

ADDITIONAL INFO <https://www.bethyl.com/product/A301-244A-T>

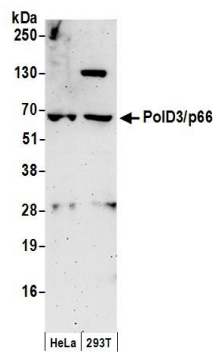
Use the link above to view SDS, a current list of citations, and other product specific information.

IP-western blot protocol: https://www.bethyl.com/content/protocol_IP_WB

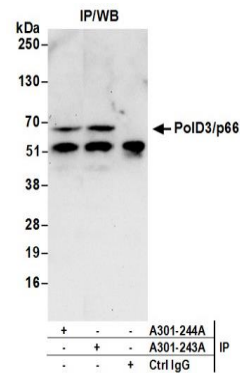
This document certifies that this product has met all of the quality control standards defined by Bethyl Laboratories, Inc.

Michael Spencer, PhD

Date: June 6, 2022



Detection of human PolD3/p66 by western blot. *Samples:* Whole cell lysate (50 µg) from HeLa and HEK293T cells prepared using NETN lysis buffer. *Antibody:* Affinity purified rabbit anti-PolD3/p66 antibody A301-244A (lot A301-244A-2) used for WB at 0.1 µg/ml. *Detection:* Chemiluminescence with an exposure time of 3 minutes.



Detection of human PolD3/p66 by western blot of immunoprecipitates. *Samples:* Whole cell lysate (0.5 or 1.0 mg per IP reaction; 20% of IP loaded) from HEK293T cells prepared using NETN lysis buffer. *Antibody:* Affinity purified rabbit anti-PolD3/p66 antibody A301-244A (lot A301-244A-2) used for IP at 6 µg per reaction. PolD3/p66 was also immunoprecipitated by rabbit anti-PolD3/p66 antibody A301-243A. For blotting immunoprecipitated PolD3/p66, A301-244A was used at 1 µg/ml. *Detection:* Chemiluminescence with an exposure time of 30 seconds.