



# SZABO SCANDIC

Part of Europa Biosite

## Produktinformation



Forschungsprodukte & Biochemikalien



Zellkultur & Verbrauchsmaterial



Diagnostik & molekulare Diagnostik



Laborgeräte & Service

Weitere Information auf den folgenden Seiten!  
See the following pages for more information!



### Lieferung & Zahlungsart

siehe unsere [Liefer- und Versandbedingungen](#)

### Zuschläge

- Mindermengenzuschlag
- Trockeneiszuschlag
- Gefahrgutzuschlag
- Expressversand

### SZABO-SCANDIC HandelsgmbH

Quellenstraße 110, A-1100 Wien

T. +43(0)1 489 3961-0

F. +43(0)1 489 3961-7

[mail@szabo-scandic.com](mailto:mail@szabo-scandic.com)

[www.szabo-scandic.com](http://www.szabo-scandic.com)

[linkedin.com/company/szaboscandic](https://www.linkedin.com/company/szaboscandic) 

# SPTAN1 /Alpha II-spectrin Antibody

Rabbit Polyclonal

Antigen Affinity Purified

Protein ID NP\_003118.1

Catalog No. A301-248A

GeneID 6709

Lot No. A301-248A-2



<b>APPLICATIONS</b>	WB, IHC
<b>SPECIES REACTIVITY</b>	Human, Mouse
<b>PRESUMED REACTIVITY</b>	Based on 100% sequence identity, this antibody is predicted to react with Rat and Chicken
<b>AMOUNT</b>	100 µl
<b>CONCENTRATION</b>	1000 µg/ml
<b>STORAGE/SHELF LIFE</b>	2 – 8° C / 1 year from date of receipt
<b>PHYSICAL STATE</b>	Liquid
<b>BUFFER</b>	Tris-citrate/phosphate buffer, pH 7 to 8 containing 0.09% Sodium Azide
<b>ISOTYPE</b>	IgG
<b>ORIGIN</b>	USA
<b>PRODUCTION PROCEDURES</b>	Antibody was affinity purified using an epitope specific to SPTAN1 /Alpha II-spectrin immobilized on solid support.

The epitope recognized by A301-248A maps to a region between residue 1000 and 1050 of human spectrin, alpha, non-erythrocytic 1 using the numbering given in entry NP\_003118.1 (GeneID 6709).

Immunoglobulin concentration was determined by extinction coefficient: absorbance at 280 nm of 1.4 equals 1.0 mg of IgG.

**APPLICATIONS** Centrifuge tube to remove product from lid. Optimal working dilutions should be determined experimentally by the investigator. Prepare working dilution immediately before use.

Western Blot 1:2,000 – 1:10,000

Immunoprecipitation Not recommended

Immunohistochemistry 1:500 – 1:2,000. Epitope retrieval with citrate buffer pH 6.0 is recommended for FFPE tissue sections.

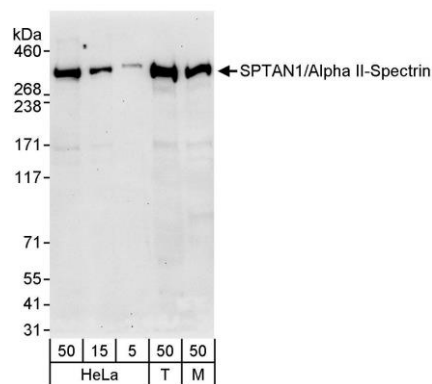
**APPLICATION NOTES** Western blot of lysates performed using standard western blot reagents and 4–8% SDS-PAGE.

**IHC HUMAN CONTROLS** Colon Carcinoma, Ovarian Carcinoma

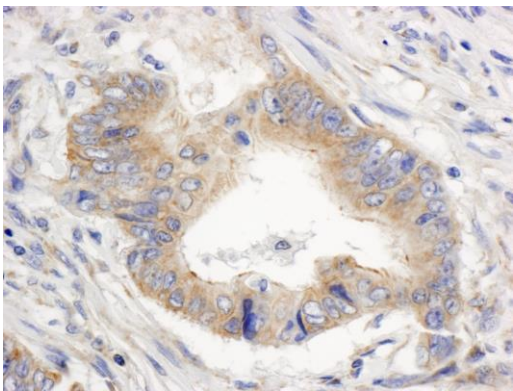
**ADDITIONAL INFO** <https://www.bethyl.com/product/A301-248A>

Use the link above to view SDS, a current list of citations, and other product specific information.

This document certifies that this product has met all of the quality control standards defined by Bethyl Laboratories, Inc.  
Eric McIntush, PhD | Chief Scientific Officer Date: June 21, 2019



**Detection of human and mouse SPTAN1 /Alpha II-Spectrin by western blot.** *Samples:* Whole cell lysate from HeLa (5, 15 and 50 µg), HEK293T (T; 50 µg), and mouse NIH 3T3 (M; 50 µg) cells. *Antibody:* Affinity purified rabbit anti-SPTAN1 /Alpha II-Spectrin antibody A301-248A (lot A301-248A-2) used for WB at 0.2 µg/ml. *Detection:* Chemiluminescence with an exposure time of 30 seconds.



**Detection of human SPTAN1 /Alpha II-Spectrin by immunohistochemistry.** *Sample:* FFPE section of human colon carcinoma. *Antibody:* Affinity purified rabbit anti-SPTAN1 /Alpha II-Spectrin (Cat. No. A301-248A Lot2) used at a dilution of 1:1,000 (1 µg/ml). *Detection:* DAB