



SZABO SCANDIC

Part of Europa Biosite

Produktinformation



Forschungsprodukte & Biochemikalien



Zellkultur & Verbrauchsmaterial



Diagnostik & molekulare Diagnostik



Laborgeräte & Service

Weitere Information auf den folgenden Seiten!
See the following pages for more information!



Lieferung & Zahlungsart

siehe unsere [Liefer- und Versandbedingungen](#)

Zuschläge

- Mindermengenzuschlag
- Trockeneiszuschlag
- Gefahrgutzuschlag
- Expressversand

SZABO-SCANDIC Handels GmbH

Quellenstraße 110, A-1100 Wien

T. +43(0)1 489 3961-0

F. +43(0)1 489 3961-7

mail@szabo-scandic.com

www.szabo-scandic.com

[linkedin.com/company/szaboscandic](https://www.linkedin.com/company/szaboscandic) 

CSTF50 Antibody

Rabbit Polyclonal

Antigen Affinity Purified

Protein ID NP_001315.1

Catalog No. A301-250A

GeneID 1477

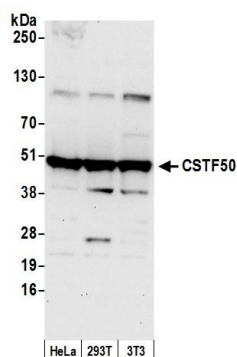
Lot No. A301-250A-3



APPLICATIONS	WB, IP, IHC						
SPECIES REACTIVITY	Human, Mouse						
PRESUMED REACTIVITY	Based on 100% sequence identity, this antibody is predicted to react with Rat and Orangutan						
AMOUNT	100 µl						
CONCENTRATION	1000 µg/ml						
STORAGE/SHELF LIFE	2 – 8° C / 1 year from date of receipt						
PHYSICAL STATE	Liquid						
BUFFER	Tris-citrate/phosphate buffer, pH 7 to 8 containing 0.09% Sodium Azide						
ISOTYPE	IgG						
ORIGIN	USA						
PRODUCTION PROCEDURES	<p>Antibody was affinity purified using an epitope specific to CSTF50 immobilized on solid support.</p> <p>The epitope recognized by A301-250A maps to a region between residue 75 and 125 of human cleavage stimulation factor, 3' pre-RNA, subunit 1, 50kDa using the numbering given in entry NP_001315.1 (GeneID 1477).</p> <p>Immunoglobulin concentration was determined by extinction coefficient: absorbance at 280 nm of 1.4 equals 1.0 mg of IgG.</p>						
APPLICATIONS	<p>Centrifuge tube to remove product from lid. Optimal working dilutions should be determined experimentally by the investigator. Prepare working dilution immediately before use.</p> <table><tr><td>Western Blot</td><td>1:1,000 – 1:5,000</td></tr><tr><td>Immunoprecipitation</td><td>2 – 10 µg/mg lysate</td></tr><tr><td>Immunohistochemistry</td><td>1:1,000 – 1:5,000. Epitope retrieval with citrate buffer pH 6.0 is recommended for FFPE tissue sections.</td></tr></table>	Western Blot	1:1,000 – 1:5,000	Immunoprecipitation	2 – 10 µg/mg lysate	Immunohistochemistry	1:1,000 – 1:5,000. Epitope retrieval with citrate buffer pH 6.0 is recommended for FFPE tissue sections.
Western Blot	1:1,000 – 1:5,000						
Immunoprecipitation	2 – 10 µg/mg lysate						
Immunohistochemistry	1:1,000 – 1:5,000. Epitope retrieval with citrate buffer pH 6.0 is recommended for FFPE tissue sections.						
APPLICATION NOTES	Western blot of lysates performed using standard western blot reagents and 4–20% SDS-PAGE.						
IHC HUMAN CONTROLS	Bladder Cell Carcinoma, Breast Carcinoma, Ovarian Carcinoma, Prostate Carcinoma						
IHC MOUSE CONTROLS	Colon Carcinoma CT26, Plasmacytoma, Teratoma						
ADDITIONAL INFO	<p>https://www.bethyl.com/product/A301-250A</p> <p>Use the link above to view SDS, a current list of citations, and other product specific information.</p>						

This document certifies that this product has met all of the quality control standards defined by Bethyl Laboratories, Inc.
Eric McIntush, PhD | Chief Scientific Officer

Date: June 21, 2019

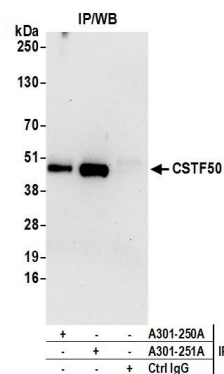


Detection of human and mouse CSTF50 by western blot.

Samples: Whole cell lysate (50 µg) from HeLa, HEK293T, and mouse NIH 3T3 cells prepared using NETN lysis buffer.

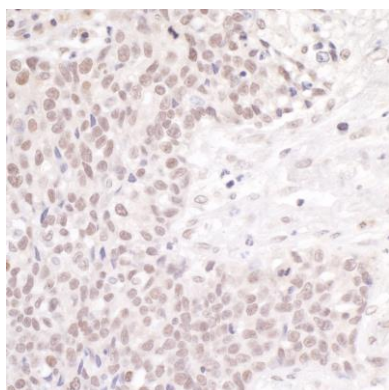
Antibody: Affinity purified rabbit anti-CSTF50 antibody A301-250A (lot A301-250A-3) used for WB at 0.4 µg/ml.

Detection: Chemiluminescence with an exposure time of 30 seconds.



Detection of human CSTF50 by western blot of immunoprecipitates.

Samples: Whole cell lysate (0.5 or 1.0 mg per IP reaction; 20% of IP loaded) from HeLa cells prepared using NETN lysis buffer. **Antibodies:** Affinity purified rabbit anti-CSTF50 antibody A301-250A (lot A301-250A-3) used for IP at 6 µg per reaction. CSTF50 was also immunoprecipitated by rabbit anti-CSTF50 antibody A301-251A. For blotting immunoprecipitated CSTF50, A301-250A was used at 1 µg/ml. **Detection:** Chemiluminescence with an exposure time of 30 seconds.

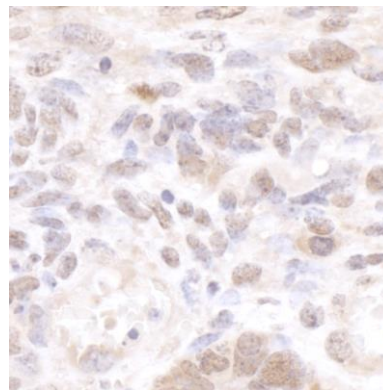


Detection of human CSTF50 by immunohistochemistry.

Sample: FFPE section of human ovarian carcinoma.

Antibody: Affinity purified rabbit anti-CSTF50 (Cat. No. A301-250A Lot3) used at a dilution of 1:5,000 (0.2 µg/ml).

Detection: DAB



Detection of mouse CSTF50 by immunohistochemistry.

Sample: FFPE section of mouse teratoma. **Antibody:** Affinity purified rabbit anti-CSTF50 (Cat. No. A301-250A Lot3) used at a dilution of 1:1,000 (1 µg/ml). **Detection:** DAB