



SZABO SCANDIC

Part of Europa Biosite

Produktinformation



Forschungsprodukte & Biochemikalien



Zellkultur & Verbrauchsmaterial



Diagnostik & molekulare Diagnostik



Laborgeräte & Service

Weitere Information auf den folgenden Seiten!
See the following pages for more information!



Lieferung & Zahlungsart

siehe unsere [Liefer- und Versandbedingungen](#)

Zuschläge

- Mindermengenzuschlag
- Trockeneiszuschlag
- Gefahrgutzuschlag
- Expressversand

SZABO-SCANDIC HandelsgmbH

Quellenstraße 110, A-1100 Wien

T. +43(0)1 489 3961-0

F. +43(0)1 489 3961-7

mail@szabo-scandic.com

www.szabo-scandic.com

[linkedin.com/company/szaboscandic](https://www.linkedin.com/company/szaboscandic) 

INT11 Antibody

Rabbit Polyclonal

Antigen Affinity Purified	Protein ID	NP_060341.2
Catalog No. A301-274A-T	GeneID	54973
Lot No. A301-274A-T-4		

APPLICATIONS	WB, IP, IHC
SPECIES REACTIVITY	Human, Mouse
PRESUMED REACTIVITY	Based on 100% sequence identity, this antibody is predicted to react with Orangutan
AMOUNT	10 µl
CONCENTRATION	1000 µg/ml
STORAGE/SHELF LIFE	2 – 8°C / 1 year from date of receipt
PHYSICAL STATE	Liquid
BUFFER	Tris-citrate/phosphate buffer, pH 7 to 8 containing 0.09% Sodium Azide
ISOTYPE	IgG
ORIGIN	USA
PRODUCTION PROCEDURES	Antibody was affinity purified using an epitope specific to INT11 immobilized on solid support.

The epitope recognized by A301-274A-T maps to a region between residue 550 and 600 of human integrator complex subunit 11 using the numbering given in entry NP_060341.2 (GeneID 54973).

APPLICATIONS Centrifuge tube to remove product from lid. Optimal working dilutions should be determined experimentally by the investigator. Prepare working dilution immediately before use.

Western Blot 1:2,000 – 1:10,000

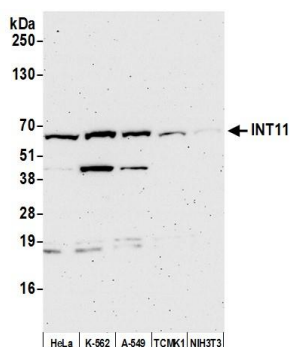
Immunoprecipitation 2 – 10 µg/mg lysate

Immunohistochemistry 1:1,000 to 1:5,000. Epitope retrieval with citrate buffer pH6.0 is recommended for FFPE tissue sections.

ADDITIONAL INFO <https://www.bethyl.com/product/A301-274A-T>

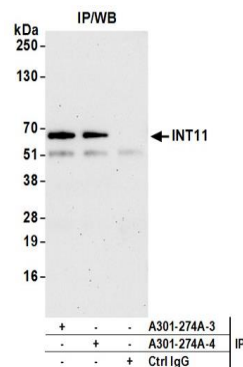
Use the link above to view SDS, a current list of citations, and other product specific information.
IP-western blot protocol: https://www.bethyl.com/content/protocol_IP_WB

This document certifies that this product has met all of the quality control standards defined by Bethyl Laboratories, Inc.
Michael Spencer, PhD Date: June 6, 2022



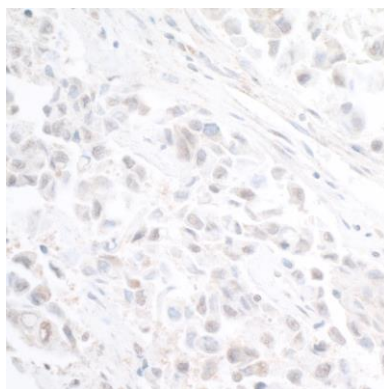
Detection of human and mouse INT11 by western blot.

Samples: Whole cell lysate (50 µg) from HeLa, K-562, A-549, TCMK-1, and NIH 3T3 cells prepared using NETN lysis buffer. **Antibody:** Affinity purified rabbit anti-INT11 antibody A301-274A (lot A301-274A-4) used for WB at 0.1 µg/ml. **Detection:** Chemiluminescence with an exposure time of 3 minutes.



Detection of human INT11 by western blot of immunoprecipitates.

Samples: Whole cell lysate (1.0 mg per IP reaction; 20% of IP loaded) from HeLa cells prepared using NETN lysis buffer. **Antibodies:** Affinity purified rabbit anti-INT11 antibody A301-274A (lot A301-274A-4) used for IP at 6 µg per reaction. INT11 was also immunoprecipitated by a previous lot of this antibody (lot A301-274A-3). For blotting immunoprecipitated INT11, A301-274A was used at 0.1 µg/ml. **Detection:** Chemiluminescence with an exposure time of 75 seconds.



Detection of human INT11 by immunohistochemistry.

Sample: FFPE section of human breast carcinoma.

Antibody: Affinity purified rabbit anti-INT11 (Cat. No. A301-274A Lot 4) used at a dilution of 1:5,000 (0.2 µg/ml).

Detection: DAB