



SZABO SCANDIC

Part of Europa Biosite

Produktinformation



Forschungsprodukte & Biochemikalien



Zellkultur & Verbrauchsmaterial



Diagnostik & molekulare Diagnostik



Laborgeräte & Service

Weitere Information auf den folgenden Seiten!
See the following pages for more information!



Lieferung & Zahlungsart

siehe unsere [Liefer- und Versandbedingungen](#)

Zuschläge

- Mindermengenzuschlag
- Trockeneiszuschlag
- Gefahrgutzuschlag
- Expressversand

SZABO-SCANDIC HandelsgmbH

Quellenstraße 110, A-1100 Wien

T. +43(0)1 489 3961-0

F. +43(0)1 489 3961-7

mail@szabo-scandic.com

www.szabo-scandic.com

[linkedin.com/company/szaboscandic](https://www.linkedin.com/company/szaboscandic) 

NBS1 Antibody

Rabbit Polyclonal

Antigen Affinity Purified

Protein ID NP_038780.3

Catalog No. A301-284A-T

GeneID 27354

Lot No. A301-284A-T-2

APPLICATIONS WB, IP

SPECIES REACTIVITY Mouse

PRESUMED REACTIVITY Based on 100% sequence identity, this antibody is predicted to react with Rat

AMOUNT 10 µl

CONCENTRATION 200 µg/ml

STORAGE/SHELF LIFE 2 – 8°C / 1 year from date of receipt

PHYSICAL STATE Liquid

BUFFER Tris-buffered Saline containing 0.1% BSA and 0.09% Sodium Azide

ISOTYPE IgG

ORIGIN USA

PRODUCTION PROCEDURES Antibody was affinity purified using an epitope specific to NBS1 immobilized on solid support.

The epitope recognized by A301-284A-T maps to a region between residue 701 and 751 of mouse Nibrin using the numbering given in entry NP_038780.3 (GeneID 27354).

APPLICATIONS Centrifuge tube to remove product from lid. Optimal working dilutions should be determined experimentally by the investigator. Prepare working dilution immediately before use.

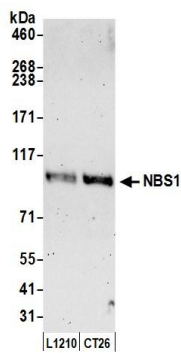
Western Blot 1:2,000 – 1:10,000

Immunoprecipitation 2 – 5 µg/mg lysate

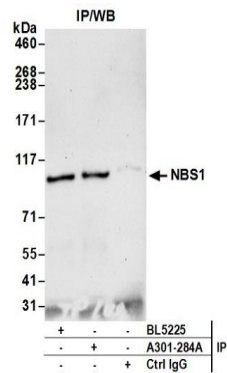
ADDITIONAL INFO <https://www.bethyl.com/product/A301-284A-T>

Use the link above to view SDS, a current list of citations, and other product specific information.
IP-western blot protocol: https://www.bethyl.com/content/protocol_IP_WB

This document certifies that this product has met all of the quality control standards defined by Bethyl Laboratories, Inc.
Michael Spencer, PhD Date: June 6, 2022



Detection of mouse NBS1 by western blot. *Samples:* Whole cell lysate (50 µg) from L1210 and CT26.WT cells prepared using NETN lysis buffer. *Antibody:* Affinity purified rabbit anti-NBS1 antibody A301-284A (lot A301-284A-2) used for WB at 0.1 µg/ml. *Detection:* Chemiluminescence with an exposure time of 3 minutes.



Detection of mouse NBS1 by western blot of immunoprecipitates. *Samples:* Whole cell lysate (1.0 mg per IP reaction; 20% of IP loaded) from L1210 cells prepared using NETN lysis buffer. *Antibodies:* Affinity purified rabbit anti-NBS1 antibody A301-284A (lot A301-284A-2) used for IP at 3 µg per reaction. NBS1 was also immunoprecipitated by rabbit anti-NBS1 antibody BL5225. For blotting immunoprecipitated NBS1, A301-284A was used at 1 µg/ml. *Detection:* Chemiluminescence with an exposure time of 30 seconds.