



SZABO SCANDIC

Part of Europa Biosite

Produktinformation



Forschungsprodukte & Biochemikalien



Zellkultur & Verbrauchsmaterial



Diagnostik & molekulare Diagnostik



Laborgeräte & Service

Weitere Information auf den folgenden Seiten!
See the following pages for more information!



Lieferung & Zahlungsart

siehe unsere [Liefer- und Versandbedingungen](#)

Zuschläge

- Mindermengenzuschlag
- Trockeneiszuschlag
- Gefahrgutzuschlag
- Expressversand

SZABO-SCANDIC HandelsgmbH

Quellenstraße 110, A-1100 Wien

T. +43(0)1 489 3961-0

F. +43(0)1 489 3961-7

mail@szabo-scandic.com

www.szabo-scandic.com

[linkedin.com/company/szaboscandic](https://www.linkedin.com/company/szaboscandic)



PAF49 Antibody

Rabbit Polyclonal

Antigen Affinity Purified

Protein ID NP_036231.1

Catalog No. A301-295A

GeneID 10849

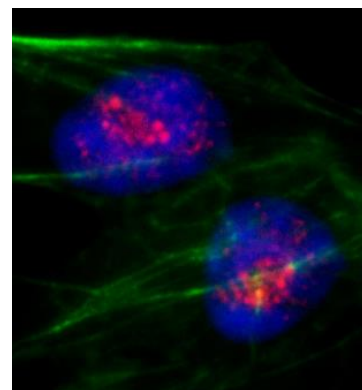
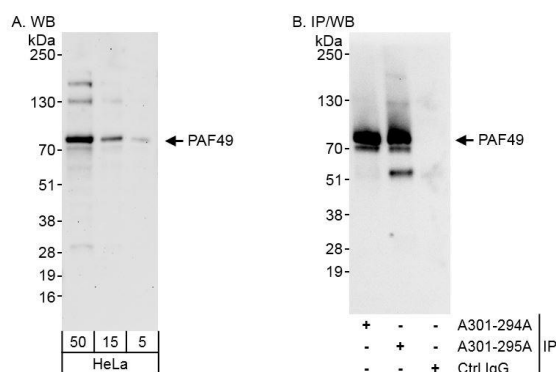
Lot No. A301-295A-1



| | | | | | | | | | |
|------------------------------|---|--------------|--------------------|---------------------|--------------------|----------------------|---|--------------------------|---|
| APPLICATIONS | WB, IP, IHC, ICC-IF | | | | | | | | |
| SPECIES REACTIVITY | Human | | | | | | | | |
| AMOUNT | 100 µl | | | | | | | | |
| CONCENTRATION | 200 µg/ml | | | | | | | | |
| STORAGE/SHELF LIFE | 2 – 8° C / 1 year from date of receipt | | | | | | | | |
| PHYSICAL STATE | Liquid | | | | | | | | |
| BUFFER | Tris-buffered Saline containing 0.1% BSA and 0.09% Sodium Azide | | | | | | | | |
| ISOTYPE | IgG | | | | | | | | |
| ORIGIN | USA | | | | | | | | |
| PRODUCTION PROCEDURES | <p>Antibody was affinity purified using an epitope specific to PAF49 immobilized on solid support.</p> <p>The epitope recognized by A301-295A maps to a region between residue 404 and 454 of human RNA polymerase I-associated factor PAF49 (CD3-epsilon-associated protein) using the numbering given in entry NP_036231.1 (GeneID 10849).</p> <p>Immunoglobulin concentration was determined by extinction coefficient: absorbance at 280 nm of 1.4 equals 1.0 mg of IgG.</p> | | | | | | | | |
| APPLICATIONS | <p>Centrifuge tube to remove product from lid. Optimal working dilutions should be determined experimentally by the investigator. Prepare working dilution immediately before use.</p> <table><tr><td>Western Blot</td><td>1:2,000 – 1:10,000</td></tr><tr><td>Immunoprecipitation</td><td>2 – 5 µg/mg lysate</td></tr><tr><td>Immunohistochemistry</td><td>1:500 – 1:2,000. Epitope retrieval with Tris-EDTA pH 9.0 is recommended for FFPE tissue sections.</td></tr><tr><td>Immunofluorescence (ICC)</td><td>1:50 – 1:250. Formaldehyde fixation is recommended. Permeabilization with Triton-X 100 is recommended for formaldehyde-fixed cells.</td></tr></table> | Western Blot | 1:2,000 – 1:10,000 | Immunoprecipitation | 2 – 5 µg/mg lysate | Immunohistochemistry | 1:500 – 1:2,000. Epitope retrieval with Tris-EDTA pH 9.0 is recommended for FFPE tissue sections. | Immunofluorescence (ICC) | 1:50 – 1:250. Formaldehyde fixation is recommended. Permeabilization with Triton-X 100 is recommended for formaldehyde-fixed cells. |
| Western Blot | 1:2,000 – 1:10,000 | | | | | | | | |
| Immunoprecipitation | 2 – 5 µg/mg lysate | | | | | | | | |
| Immunohistochemistry | 1:500 – 1:2,000. Epitope retrieval with Tris-EDTA pH 9.0 is recommended for FFPE tissue sections. | | | | | | | | |
| Immunofluorescence (ICC) | 1:50 – 1:250. Formaldehyde fixation is recommended. Permeabilization with Triton-X 100 is recommended for formaldehyde-fixed cells. | | | | | | | | |
| APPLICATION NOTES | <p>Western blot of immunoprecipitates performed using Normal Pig Serum (Cat. No. S100-020), Goat anti-Rabbit Light Chain HRP Conjugate (Cat. No. A120-113P) and 4-20% SDS-PAGE (link to IP-western blot protocol in Additional Info section below).</p> <p>Western blot of lysates performed using standard western blot reagents and 4-20% SDS-PAGE.</p> | | | | | | | | |
| IHC HUMAN CONTROLS | Breast Carcinoma, Colon Carcinoma, HeLa Cells | | | | | | | | |
| ADDITIONAL INFO | <p>https://www.bethyl.com/product/A301-295A</p> <p>Use the link above to view SDS, a current list of citations, and other product specific information.</p> <p>IP-western blot protocol: https://www.bethyl.com/content/protocol_IP_WB</p> | | | | | | | | |

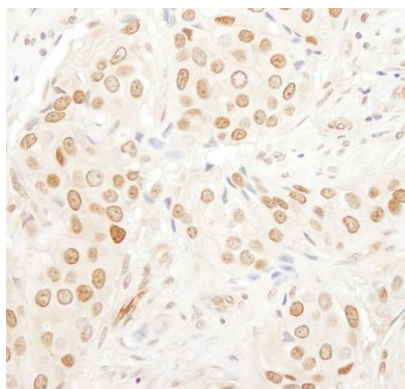
This document certifies that this product has met all of the quality control standards defined by Bethyl Laboratories, Inc.
Eric McIntush, PhD | Chief Scientific Officer

Date: June 21, 2019



Detection of human PAF49 by western blot and immunoprecipitation. *Samples:* Whole cell lysate (5, 15 and 50 µg for WB; 1 mg for IP, 20% of IP loaded) from HeLa cells. *Antibodies:* Affinity purified rabbit anti-PAF49 antibody A301-295A used for WB at 0.04 µg/ml (A) and 1 µg/ml (B) and used for IP at 3 µg/mg lysate. PAF49 was also immunoprecipitated by rabbit anti-PAF49 antibody A301-294A, which recognizes an upstream epitope. *Detection:* Chemiluminescence with exposure times of 3 minutes (A) and 10 seconds (B).

Detection of human PAF49 by immunocytochemistry. *Sample:* Formaldehyde-fixed asynchronous HeLa cells. *Antibody:* Affinity purified rabbit anti- PAF49 (Cat. No.A301-295A Lot1) used at a dilution of 1:100 (2µg/ml). *Detection:* Red-fluorescent goat anti-rabbit IgG highly cross-adsorbed Antibody used at a dilution of 1:100.



Detection of human PAF49 by immunohistochemistry. *Sample:* FFPE section of human breast carcinoma. *Antibody:* Affinity purified rabbit anti- PAF49 (Cat. No. A301-295A Lot1) used at a dilution of 1:200 (1µg/ml). *Detection:* DAB