



SZABO SCANDIC

Part of Europa Biosite

Produktinformation



Forschungsprodukte & Biochemikalien



Zellkultur & Verbrauchsmaterial



Diagnostik & molekulare Diagnostik



Laborgeräte & Service

Weitere Information auf den folgenden Seiten!
See the following pages for more information!



Lieferung & Zahlungsart

siehe unsere [Liefer- und Versandbedingungen](#)

Zuschläge

- Mindermengenzuschlag
- Trockeneiszuschlag
- Gefahrgutzuschlag
- Expressversand

SZABO-SCANDIC Handels GmbH

Quellenstraße 110, A-1100 Wien

T. +43(0)1 489 3961-0

F. +43(0)1 489 3961-7

mail@szabo-scandic.com

www.szabo-scandic.com

[linkedin.com/company/szaboscandic](https://www.linkedin.com/company/szaboscandic) 

XPF/ERCC4 Antibody

Rabbit Polyclonal

Antigen Affinity Purified

Protein ID AAB07689.1

Catalog No. A301-315A

GeneID 2072

Lot No. A301-315A-2

APPLICATIONS WB, IP

SPECIES REACTIVITY Human

AMOUNT 100 µl

CONCENTRATION 1000 µg/ml

STORAGE/SHELF LIFE 2 – 8°C / 1 year from date of receipt

PHYSICAL STATE Liquid

BUFFER Tris-citrate/phosphate buffer, pH 7 to 8 containing 0.09% Sodium Azide

ISOTYPE IgG

ORIGIN USA

PRODUCTION PROCEDURES Antibody was affinity purified using an epitope specific to XPF/ERCC4 immobilized on solid support.

The epitope recognized by A301-315A maps to a region between residue 855 and 905 of human xeroderma pigmentosum, complementation group F (excision repair cross-complementing rodent repair deficiency, complementation group 4) using the numbering given in entry AAB07689.1 (GeneID 2072).

Immunoglobulin concentration was determined by extinction coefficient: absorbance at 280 nm of 1.4 equals 1.0 mg of IgG.

APPLICATIONS Centrifuge tube to remove product from lid. Optimal working dilutions should be determined experimentally by the investigator. Prepare working dilution immediately before use.

Western Blot 1:2,000 – 1:10,000

Immunoprecipitation 2 – 10 µg/mg lysate

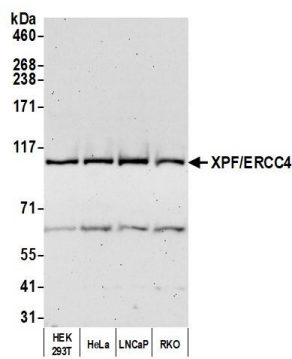
ADDITIONAL INFO <https://www.bethyl.com/product/A301-315A>

Use the link above to view SDS, a current list of citations, and other product specific information.
IP-western blot protocol: https://www.bethyl.com/content/protocol_IP_WB

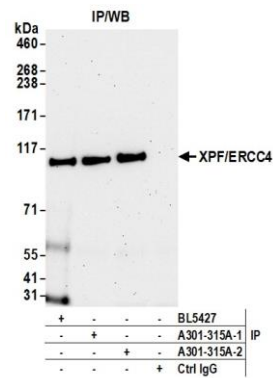
This document certifies that this product has met all of the quality control standards defined by Bethyl Laboratories, Inc.

Michael Spencer, PhD

Date: June 2, 2022



Detection of human XPF/ERCC4 by western blot. *Samples:* Whole cell lysate (25 µg) from HEK293T, HeLa, LNCaP, and RKO cells prepared using NETN lysis buffer. *Antibody:* Affinity purified rabbit anti-XPF/ERCC4 antibody (A301-315A lot 2) used for WB at 0.4 µg/ml. *Detection:* Chemiluminescence with an exposure time of 75 seconds.



Detection of human XPF/ERCC4 by western blot of immunoprecipitates. *Samples:* Whole cell lysate (1.0 mg per IP reaction; 20% of IP loaded) from HEK293T cells prepared using NETN lysis buffer. *Antibodies:* Affinity purified rabbit anti-XPF/ERCC4 antibody (A301-315A lot 2) used for IP at 6 µg per reaction. XPF/ERCC4 was also immunoprecipitated by a previous lot of this antibody (A301-315A lot 1) and a second antibody against a different epitope of XPF/ERCC4 (BL5427). For blotting immunoprecipitated XPF/ERCC4, A301-315A was used at 0.4 µg/ml. *Detection:* Chemiluminescence with an exposure time of 75 seconds.