



# SZABO SCANDIC

Part of Europa Biosite

## Produktinformation



Forschungsprodukte & Biochemikalien



Zellkultur & Verbrauchsmaterial



Diagnostik & molekulare Diagnostik



Laborgeräte & Service

Weitere Information auf den folgenden Seiten!  
See the following pages for more information!



### Lieferung & Zahlungsart

siehe unsere [Liefer- und Versandbedingungen](#)

### Zuschläge

- Mindermengenzuschlag
- Trockeneiszuschlag
- Gefahrgutzuschlag
- Expressversand

### SZABO-SCANDIC HandelsgmbH

Quellenstraße 110, A-1100 Wien

T. +43(0)1 489 3961-0

F. +43(0)1 489 3961-7

[mail@szabo-scandic.com](mailto:mail@szabo-scandic.com)

[www.szabo-scandic.com](http://www.szabo-scandic.com)

[linkedin.com/company/szaboscandic](https://www.linkedin.com/company/szaboscandic) 

# ACF1 /BAZ1A Antibody

Rabbit Polyclonal

Antigen Affinity Purified

RefSeq ID NP\_872589.1

Catalog No. A301-318A-T

Uniprot ID Q9NRL2

Lot No. 2

GeneID 11177

**APPLICATIONS** WB, IP

**SPECIES REACTIVITY** Human

**AMOUNT** 10 µl

**CONCENTRATION** 200 µg/ml

**STORAGE/SHELF LIFE** 2 – 8°C / 1 year from date of receipt

**PHYSICAL STATE** Liquid

**BUFFER** Tris-buffered Saline containing 0.1% BSA and 0.09% Sodium Azide

**ISOTYPE** IgG

**ORIGIN** USA

**PRODUCTION PROCEDURES** Antibody was affinity purified using an epitope specific to ACF1 /BAZ1A immobilized on solid support.

The epitope recognized by A301-318A-T maps to a region between residue 725 and 775 of human ATP-dependent chromatin remodeling protein 1 (Bromodomain adjacent to zinc finger domain protein 1A ) using the numbering given in entry NP\_038476.2 (GeneID 11177).

**APPLICATIONS** Centrifuge tube to remove product from lid. Optimal working dilutions should be determined experimentally by the investigator. Prepare working dilution immediately before use.

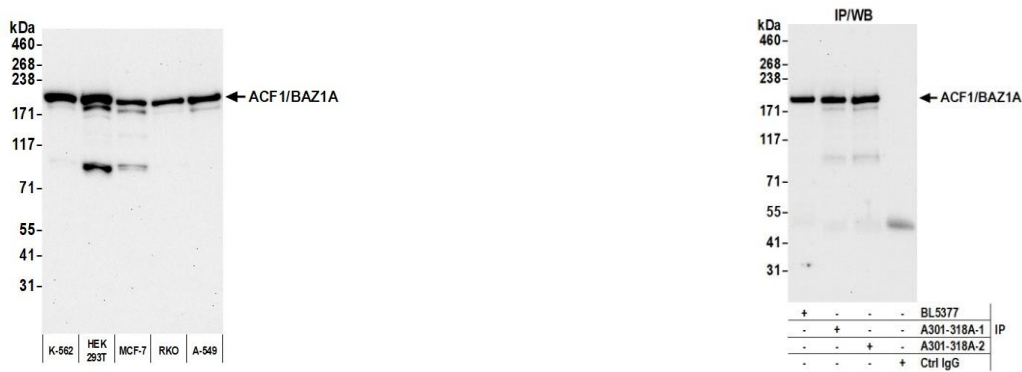
Western Blot 1:2000 – 1:10,000

Immunoprecipitation 6 µg/mg lysate

**ADDITIONAL INFO** <https://www.fortislifesciences.com/p/A301-318A-T>

Use the link above to view SDS, a current list of citations, and other product specific information.

This document certifies that this product has met all of the quality control standards defined by Bethyl Laboratories, Inc.  
Michael Spencer, PhD Date: February 26, 2024



**Detection of human ACF1/BAZ1A by western blot.**  
*Samples:* Whole cell lysate (25 µg) from K-562, HEK293T, MCF-7, RKO, and A-549 cells prepared using NETN lysis buffer. *Antibody:* Affinity purified rabbit anti-ACF1/BAZ1A antibody (A301-318A lot 2) used for WB at 0.04 µg/ml. *Detection:* Chemiluminescence with an exposure time of 3 minutes.

**Detection of human ACF1/BAZ1A by western blot of immunoprecipitates.** *Samples:* Whole cell lysate (1.0 mg per IP reaction; 20% of IP loaded) from K-562 cells prepared using NETN lysis buffer. *Antibodies:* Affinity purified rabbit anti-ACF1/BAZ1A antibody (A301-318A lot 2) used for IP at 6 µg per reaction. ACF1/BAZ1A was also immunoprecipitated by a previous lot of this antibody (A301-318A lot 1) and a second antibody against a different epitope of ACF1/BAZ1A (BL5377). For blotting immunoprecipitated ACF1/BAZ1A, A301-318A was used at 0.1 µg/ml. *Detection:* Chemiluminescence with an exposure time of 10 seconds.