



# SZABO SCANDIC

Part of Europa Biosite

## Produktinformation



Forschungsprodukte & Biochemikalien



Zellkultur & Verbrauchsmaterial



Diagnostik & molekulare Diagnostik



Laborgeräte & Service

Weitere Information auf den folgenden Seiten!  
See the following pages for more information!



### Lieferung & Zahlungsart

siehe unsere [Liefer- und Versandbedingungen](#)

### Zuschläge

- Mindermengenzuschlag
- Trockeneiszuschlag
- Gefahrgutzuschlag
- Expressversand

### SZABO-SCANDIC Handels GmbH

Quellenstraße 110, A-1100 Wien

T. +43(0)1 489 3961-0

F. +43(0)1 489 3961-7

[mail@szabo-scandic.com](mailto:mail@szabo-scandic.com)

[www.szabo-scandic.com](http://www.szabo-scandic.com)

[linkedin.com/company/szaboscandic](https://www.linkedin.com/company/szaboscandic)



# FASN Antibody

Rabbit Polyclonal

Antigen Affinity Purified	RefSeq ID	NP_004095.4
Catalog No. A301-324A	Uniprot ID	P49327
Lot No. 2	GeneID	2194

<b>APPLICATIONS</b>	WB, IP, IHC
<b>SPECIES REACTIVITY</b>	Human, Mouse
<b>PRESUMED REACTIVITY</b>	Based on 100% sequence identity, this antibody is predicted to react with Rat and Bovine
<b>AMOUNT</b>	100 µl
<b>CONCENTRATION</b>	200 µg/ml
<b>STORAGE/SHELF LIFE</b>	2 – 8°C / 1 year from date of receipt
<b>PHYSICAL STATE</b>	Liquid
<b>BUFFER</b>	Tris-buffered Saline containing 0.1% BSA and 0.09% Sodium Azide
<b>ISOTYPE</b>	IgG
<b>ORIGIN</b>	USA
<b>PRODUCTION PROCEDURES</b>	Antibody was affinity purified using an epitope specific to FASN immobilized on solid support.

The epitope recognized by A301-324A maps to a region between residue 2462 and 2511 of human fatty acid synthase using the numbering given in entry NP\_004095.4 (GeneID 2194).

Immunoglobulin concentration was determined using Beer's Law where 1 mg/mL IgG has an A280 of 1.4.

**APPLICATIONS** Centrifuge tube to remove product from lid. Optimal working dilutions should be determined experimentally by the investigator. Prepare working dilution immediately before use.

Western Blot	1:2000 – 1:10,000 (3–8% Tris-acetate gel recommended)
Immunoprecipitation	6 µg/mg lysate
Immunohistochemistry	1:100 to 1:500. Epitope retrieval with citrate buffer pH6.0 is recommended for FFPE tissue sections.

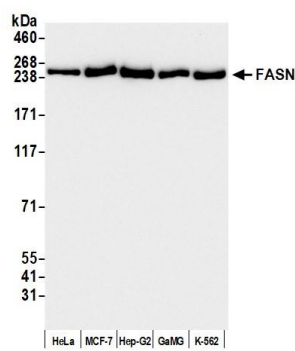
**IHC HUMAN CONTROLS** Breast Carcinoma, Prostate Carcinoma

**IHC MOUSE CONTROLS** Plasmacytoma, Renal Cell Carcinoma, Teratoma

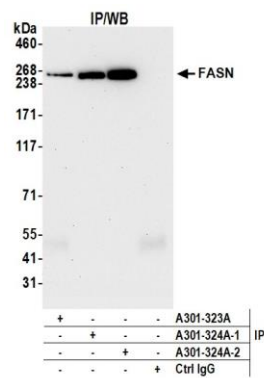
**ADDITIONAL INFO** <https://www.fortislife.com/p/A301-324A>

Use the link above to view SDS, a current list of citations, and other product specific information.

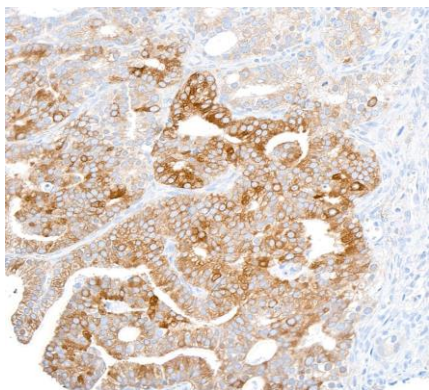
This document certifies that this product has met all of the quality control standards defined by Bethyl Laboratories, Inc.  
Michael Spencer, PhD Date: June 11, 2024



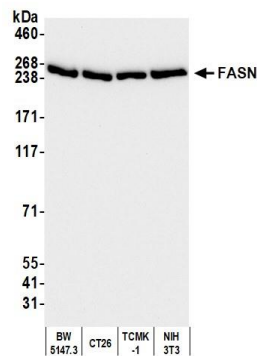
**Detection of human FASN by western blot.** *Samples:* Whole cell lysate (25 µg) from HeLa, MCF-7, Hep-G2, GaMG, and K-562 cells prepared using NETN lysis buffer. *Antibody:* Affinity purified rabbit anti-FASN antibody (A301-324A lot 2) used for WB at 0.04 µg/ml. *Detection:* Chemiluminescence with an exposure time of 10 seconds.



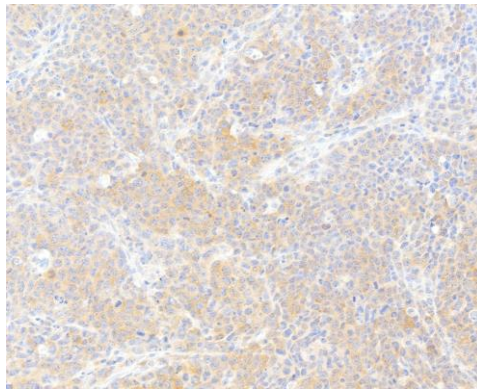
**Detection of human FASN by western blot of immunoprecipitates.** *Samples:* Whole cell lysate (1 mg per IP; 5% of IP loaded) from HeLa cells prepared using NETN lysis buffer. *Antibodies:* Affinity purified rabbit anti-FASN antibody (A301-324A lot 2) used for IP at 6 µg per reaction. FASN was also immunoprecipitated by a previous lot of this antibody (A301-324A lot 1) and a second antibody against a different epitope of FASN (A301-323A). For blotting immunoprecipitated FASN, A301-324A was used at 0.1 µg/ml. *Detection:* Chemiluminescence with an exposure time of 3 minutes.



**Detection of human FASN by immunohistochemistry.** *Sample:* FFPE section of human prostate carcinoma. *Antibody:* Affinity purified rabbit anti-FASN (A301-324A lot 2). *Secondary:* HRP-conjugated goat anti-rabbit IgG (A120-501P).



**Detection of mouse FASN by western blot.** *Samples:* Whole cell lysate (25 µg) from BW5147.3, CT26, TCMK-1, and NIH 3T3 cells prepared using NETN lysis buffer. *Antibody:* Affinity purified rabbit anti-FASN antibody (A301-324A lot 2) used for WB at 0.04 µg/ml. *Detection:* Chemiluminescence with an exposure time of 30 seconds.

**Detection of mouse FASN by immunohistochemistry.**

*Sample:* FFPE section of mouse plasmacytoma. *Antibody:*

Affinity purified rabbit anti-FASN (A301-324A lot 2).

*Secondary:* HRP-conjugated goat anti-rabbit IgG (A120-501P).