



# SZABO SCANDIC

Part of Europa Biosite

## Produktinformation



Forschungsprodukte & Biochemikalien



Zellkultur & Verbrauchsmaterial



Diagnostik & molekulare Diagnostik



Laborgeräte & Service

Weitere Information auf den folgenden Seiten!  
See the following pages for more information!



### Lieferung & Zahlungsart

siehe unsere [Liefer- und Versandbedingungen](#)

### Zuschläge

- Mindermengenzuschlag
- Trockeneiszuschlag
- Gefahrgutzuschlag
- Expressversand

### SZABO-SCANDIC Handels GmbH

Quellenstraße 110, A-1100 Wien

T. +43(0)1 489 3961-0

F. +43(0)1 489 3961-7

[mail@szabo-scandic.com](mailto:mail@szabo-scandic.com)

[www.szabo-scandic.com](http://www.szabo-scandic.com)

[linkedin.com/company/szaboscandic](https://www.linkedin.com/company/szaboscandic)



# MYBBP1A Antibody

Rabbit Polyclonal

|                           |            |             |
|---------------------------|------------|-------------|
| Antigen Affinity Purified | RefSeq ID  | NP_055335.1 |
| Catalog No. A301-327A-T   | Uniprot ID | Q9BQG0      |
| Lot No. 3                 | GeneID     | 10514       |

|                       |   |
|-----------------------|---|
| APPLICATIONS          | IP, IHC   |
| SPECIES REACTIVITY    | Human   |
| AMOUNT                | 10 µl   |
| CONCENTRATION         | 1000 µg/ml  |
| STORAGE/SHELF LIFE    | 2 – 8°C / 1 year from date of receipt   |
| PHYSICAL STATE        | Liquid  |
| BUFFER                | Tris-citrate/phosphate buffer, pH 7 to 8 containing 0.09% Sodium Azide                            |
| ISOTYPE               | IgG   |
| ORIGIN                | USA   |
| PRODUCTION PROCEDURES | Antibody was affinity purified using an epitope specific to MYBBP1A immobilized on solid support. |

The epitope recognized by A301-327A-T maps to a region between residue 450 and 500 of human MYB binding protein (P160) 1a using the numbering given in entry NP\_055335.1 (GeneID 10514).

Immunoglobulin concentration was determined using Beer's Law where 1 mg/mL IgG has an A280 of 1.4.

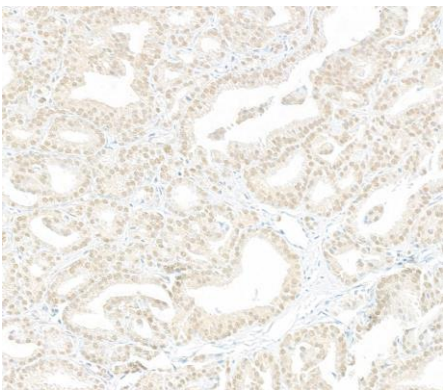
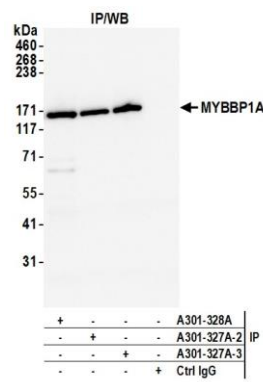
**APPLICATIONS** Centrifuge tube to remove product from lid. Optimal working dilutions should be determined experimentally by the investigator. Prepare working dilution immediately before use.

Immunoprecipitation 6 µg/mg lysate  
Immunohistochemistry 1:500 – 1:2000. Epitope retrieval with citrate buffer pH 6.0 is recommended for FFPE tissue sections.

**IHC HUMAN CONTROLS** Colon Carcinoma, Ovarian Carcinoma, Prostate Carcinoma

**ADDITIONAL INFO** <https://www.fortislifesciences.com/p/A301-327A-T>  
Use the link above to view SDS, a current list of citations, and other product specific information.

This document certifies that this product has met all of the quality control standards defined by Bethyl Laboratories, Inc.  
Michael Spencer, PhD Date: June 11, 2024



**Detection of human MYBBP1A by western blot of immunoprecipitates.** *Samples:* Whole cell lysate (1.0 mg per IP reaction; 20% of IP loaded) from HeLa cells prepared using NETN lysis buffer. *Antibodies:* Affinity purified rabbit anti-MYBBP1A antibody (A301-327A lot 3) used for IP at 6 µg per reaction. MYBBP1A was also immunoprecipitated by a previous lot of this antibody (A301-327A lot 2) and a second antibody against a different epitope of MYBBP1A (A301-328A). For blotting immunoprecipitated MYBBP1A, A301-328A was used at 0.04 µg/ml. *Detection:* Chemiluminescence with an exposure time of 1 second.

**Detection of human MYBBP1A by immunohistochemistry.** *Sample:* FFPE section of human colon carcinoma. *Antibody:* Affinity purified rabbit anti-MYBBP1A (A301-327A Lot 3) used at a dilution of 1:1,000 (1µg/ml). *Detection:* DAB