



# SZABO SCANDIC

Part of Europa Biosite

## Produktinformation



Forschungsprodukte & Biochemikalien



Zellkultur & Verbrauchsmaterial



Diagnostik & molekulare Diagnostik



Laborgeräte & Service

Weitere Information auf den folgenden Seiten!  
See the following pages for more information!



### Lieferung & Zahlungsart

siehe unsere [Liefer- und Versandbedingungen](#)

### Zuschläge

- Mindermengenzuschlag
- Trockeneiszuschlag
- Gefahrgutzuschlag
- Expressversand

### SZABO-SCANDIC Handels GmbH

Quellenstraße 110, A-1100 Wien

T. +43(0)1 489 3961-0

F. +43(0)1 489 3961-7

[mail@szabo-scandic.com](mailto:mail@szabo-scandic.com)

[www.szabo-scandic.com](http://www.szabo-scandic.com)

[linkedin.com/company/szaboscandic](https://www.linkedin.com/company/szaboscandic) 

# CSB/ERCC6 Antibody

Rabbit Polyclonal

Antigen Affinity Purified

RefSeq ID NP\_000115.1

Catalog No. A301-345A-T

Uniprot ID Q03468

Lot No. 4

GeneID 2074

<b>APPLICATIONS</b>	WB, IP
<b>SPECIES REACTIVITY</b>	Human
<b>AMOUNT</b>	10 µl
<b>CONCENTRATION</b>	1000 µg/ml
<b>STORAGE/SHELF LIFE</b>	2 – 8°C / 1 year from date of receipt
<b>PHYSICAL STATE</b>	Liquid
<b>BUFFER</b>	Tris-citrate/phosphate buffer, pH 7 to 8 containing 0.09% Sodium Azide
<b>ISOTYPE</b>	IgG
<b>ORIGIN</b>	USA
<b>PRODUCTION PROCEDURES</b>	Antibody was affinity purified using an epitope specific to CSB/ERCC6 immobilized on solid support.

The epitope recognized by A301-345A-T maps to a region between residue 1 and 50 of human Cockayne syndrome protein B (excision repair cross-complementing rodent repair deficiency, complementation group 6) using the numbering given in entry NP\_000115.1 (GeneID 2074).

Immunoglobulin concentration was determined using Beer's Law where 1 mg/mL IgG has an A280 of 1.4.

**APPLICATIONS** Centrifuge tube to remove product from lid. Optimal working dilutions should be determined experimentally by the investigator. Prepare working dilution immediately before use.

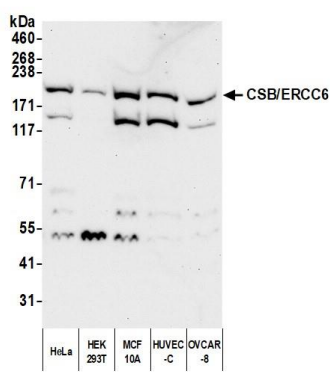
Western Blot 1:1000 – 1:5000

Immunoprecipitation 6 µg/mg lysate

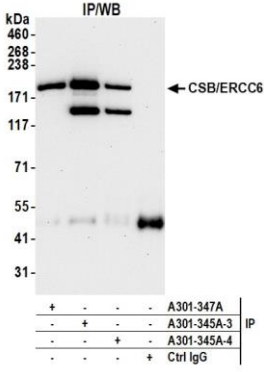
**ADDITIONAL INFO** <https://www.fortislife.com/p/A301-345A-T>

Use the link above to view SDS, a current list of citations, and other product specific information.

This document certifies that this product has met all of the quality control standards defined by Bethyl Laboratories, Inc.  
Michael Spencer, PhD Date: April 2, 2024



**Detection of human CSB/ERCC6 by western blot.**  
*Samples:* Whole cell lysate (50 µg) from HeLa, HEK293T, MCF10A, HUVEC-C, and OVCAR-8 cells prepared using NETN lysis buffer. *Antibody:* Affinity purified rabbit anti-CSB/ERCC6 antibody (A301-345A lot 4) used for WB at 0.2 µg/ml. *Detection:* Chemiluminescence with an exposure time of 3 minutes.



**Detection of human CSB/ERCC6 by western blot of immunoprecipitates.** *Samples:* Whole cell lysate (1.0 mg per IP reaction; 20% of IP loaded) from HeLa cells prepared using NETN lysis buffer. *Antibodies:* Affinity purified rabbit anti-CSB/ERCC6 antibody (A301-345A lot 4) used for IP at 6 µg per reaction. CSB/ERCC6 was also immunoprecipitated by a previous lot of this antibody (A301-345A lot 3) and a second antibody against a different epitope of CSB/ERCC6 (A301-347A). For blotting immunoprecipitated CSB/ERCC6, A301-345A was used at 0.4 µg/ml. *Detection:* Chemiluminescence with an exposure time of 3 minutes.