



# SZABO SCANDIC

Part of Europa Biosite

## Produktinformation



Forschungsprodukte & Biochemikalien



Zellkultur & Verbrauchsmaterial



Diagnostik & molekulare Diagnostik



Laborgeräte & Service

Weitere Information auf den folgenden Seiten!  
See the following pages for more information!



### Lieferung & Zahlungsart

siehe unsere [Liefer- und Versandbedingungen](#)

### Zuschläge

- Mindermengenzuschlag
- Trockeneiszuschlag
- Gefahrgutzuschlag
- Expressversand

### SZABO-SCANDIC Handels GmbH

Quellenstraße 110, A-1100 Wien

T. +43(0)1 489 3961-0

F. +43(0)1 489 3961-7

[mail@szabo-scandic.com](mailto:mail@szabo-scandic.com)

[www.szabo-scandic.com](http://www.szabo-scandic.com)

[linkedin.com/company/szaboscandic](https://www.linkedin.com/company/szaboscandic)



# RFWD3 Antibody

Rabbit Polyclonal

Antigen Affinity Purified

Protein ID NP\_060594.3

Catalog No. A301-398A-T

GeneID 55159

Lot No. A301-398A-T-2

<b>APPLICATIONS</b>	WB
<b>SPECIES REACTIVITY</b>	Human
<b>AMOUNT</b>	10 µl
<b>CONCENTRATION</b>	200 µg/ml
<b>STORAGE/SHELF LIFE</b>	2 – 8°C / 1 year from date of receipt
<b>PHYSICAL STATE</b>	Liquid
<b>BUFFER</b>	Tris-buffered Saline containing 0.1% BSA and 0.09% Sodium Azide
<b>ISOTYPE</b>	IgG
<b>ORIGIN</b>	USA
<b>PRODUCTION PROCEDURES</b>	Antibody was affinity purified using an epitope specific to RFWD3 immobilized on solid support.

The epitope recognized by A301-398A-T maps to a region between residue 724 and 774 of human ring finger and WD repeat domain 3 using the numbering given in entry NP\_060594.3 (GeneID 55159).

**APPLICATIONS** Centrifuge tube to remove product from lid. Optimal working dilutions should be determined experimentally by the investigator. Prepare working dilution immediately before use.

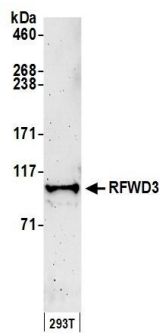
Western Blot 1:2,000 – 1:10,000

Immunoprecipitation Not recommended. Use rabbit anti-RFWD3 antibody A301-396A or A301-397A.

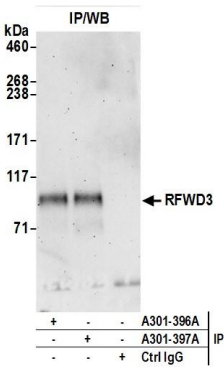
**ADDITIONAL INFO** <https://www.bethyl.com/product/A301-398A-T>

Use the link above to view SDS, a current list of citations, and other product specific information.

This document certifies that this product has met all of the quality control standards defined by Bethyl Laboratories, Inc.  
Michael Spencer, PhD Date: June 6, 2022



**Detection of human RFWD3 by western blot.** *Samples:* Whole cell lysate (50 µg) from HEK293T cells prepared using NETN lysis buffer. *Antibody:* Affinity purified rabbit anti-RFWD3 antibody A301-398A (lot A301-398A-2) used for WB at 0.1 µg/ml. *Detection:* Chemiluminescence with an exposure time of 3 minutes.



**Detection of human RFWD3 by western blot of immunoprecipitates.** *Samples:* Whole cell lysate (0.5 or 1.0 mg per IP reaction; 20% of IP loaded) from HEK293T cells prepared using NETN lysis buffer. *Antibodies:* RFWD3 was immunoprecipitated by rabbit anti-RFWD3 antibodies A301-396A and A301-397A. For blotting immunoprecipitated RFWD3, A301-398A was used at 1 µg/ml. *Detection:* Chemiluminescence with an exposure time of 3 minutes.