



SZABO SCANDIC

Part of Europa Biosite

Produktinformation



Forschungsprodukte & Biochemikalien



Zellkultur & Verbrauchsmaterial



Diagnostik & molekulare Diagnostik



Laborgeräte & Service

Weitere Information auf den folgenden Seiten!
See the following pages for more information!



Lieferung & Zahlungsart

siehe unsere [Liefer- und Versandbedingungen](#)

Zuschläge

- Mindermengenzuschlag
- Trockeneiszuschlag
- Gefahrgutzuschlag
- Expressversand

SZABO-SCANDIC Handels GmbH

Quellenstraße 110, A-1100 Wien

T. +43(0)1 489 3961-0

F. +43(0)1 489 3961-7

mail@szabo-scandic.com

www.szabo-scandic.com

[linkedin.com/company/szaboscandic](https://www.linkedin.com/company/szaboscandic)



FKBP4/FKBP52 Antibody

Rabbit Polyclonal

Antigen Affinity Purified Protein ID NP_002005.1

Catalog No. A301-427A-T GeneID 2288

Lot No. A301-427A-T-1

APPLICATIONS WB, IP, IHC

SPECIES REACTIVITY Human

AMOUNT 10 µl

CONCENTRATION 200 µg/ml

STORAGE/SHELF LIFE 2 – 8°C / 1 year from date of receipt

PHYSICAL STATE Liquid

BUFFER Tris-buffered Saline containing 0.1% BSA and 0.09% Sodium Azide

ISOTYPE IgG

ORIGIN USA

PRODUCTION PROCEDURES Antibody was affinity purified using an epitope specific to FKBP4/FKBP52 immobilized on solid support.

The epitope recognized by A301-427A-T maps to a region between residue 400 and 440 human FK506 binding protein 4 using the numbering given in entry NP_002005.1 (GeneID 2288).

APPLICATIONS Centrifuge tube to remove product from lid. Optimal working dilutions should be determined experimentally by the investigator. Prepare working dilution immediately before use.

Western Blot 1:2,000 – 1:10,000

Immunoprecipitation 2 – 5 µg/mg lysate

Immunohistochemistry 1:200 – 1:1,000. Epitope retrieval with citrate buffer pH 6.0 is recommended for FFPE tissue sections.

ADDITIONAL INFO <https://www.bethyl.com/product/A301-427A-T>

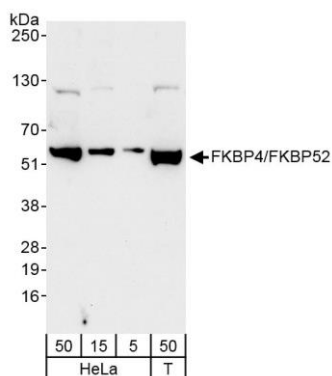
Use the link above to view SDS, a current list of citations, and other product specific information.

IP-western blot protocol: https://www.bethyl.com/content/protocol_IP_WB

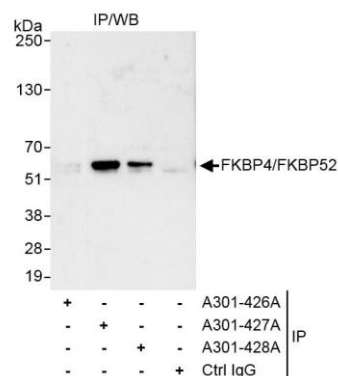
This document certifies that this product has met all of the quality control standards defined by Bethyl Laboratories, Inc.

Michael Spencer, PhD

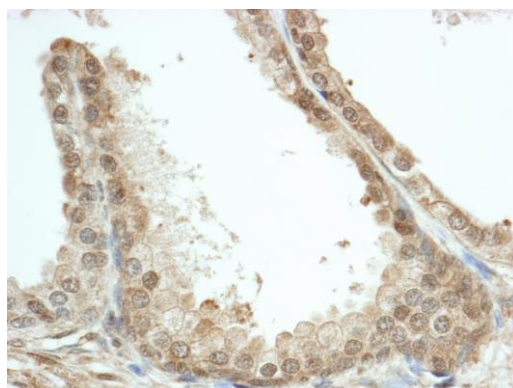
Date: June 6, 2022


Detection of human FKBP4/FKBP52 by western blot.

Samples: Whole cell lysate from HeLa (5, 15 and 50 µg) and HEK293T (T; 50 µg) cells. **Antibodies:** Affinity purified rabbit anti-FKBP4/FKBP52 antibody A301-427A (lot A301-427A-1) used for WB at 0.04 µg/ml. **Detection:** Chemiluminescence with exposure time of 30 seconds.


Detection of human FKBP4/FKBP52 by western blot of immunoprecipitates.

Samples: Whole cell lysate (1 mg for IP, 20% of IP loaded) from HeLa cells. **Antibodies:** Affinity purified rabbit anti-FKBP4/FKBP52 antibody A301-427A (lot A301-427A-1) used for IP at 3 µg/mg lysate. FKBP4/FKBP52 was also immunoprecipitated by rabbit anti-FKBP4/FKBP52 antibody A301-428A, which recognizes a downstream epitope. For blotting immunoprecipitated FKBP4/FKBP52, A301-427A was used at 1.0 µg/ml. **Detection:** Chemiluminescence with exposure time of 3 seconds.


Detection of human FKBP4/FKBP52 by immunohistochemistry.

Sample: FFPE section of human prostate carcinoma. **Antibody:** Affinity purified rabbit anti-FKBP4/FKBP52 (Cat. No. A301-427A lot 1) used at a dilution of 1:1,000 (0.2 µg/ml). **Detection:** DAB