



SZABO SCANDIC

Part of Europa Biosite

Produktinformation



Forschungsprodukte & Biochemikalien



Zellkultur & Verbrauchsmaterial



Diagnostik & molekulare Diagnostik



Laborgeräte & Service

Weitere Information auf den folgenden Seiten!
See the following pages for more information!



Lieferung & Zahlungsart

siehe unsere [Liefer- und Versandbedingungen](#)

Zuschläge

- Mindermengenzuschlag
- Trockeneiszuschlag
- Gefahrgutzuschlag
- Expressversand

SZABO-SCANDIC HandelsgmbH

Quellenstraße 110, A-1100 Wien

T. +43(0)1 489 3961-0

F. +43(0)1 489 3961-7

mail@szabo-scandic.com

www.szabo-scandic.com

[linkedin.com/company/szaboscandic](https://www.linkedin.com/company/szaboscandic) 

FKBP4/FKBP52 Antibody

Rabbit Polyclonal

Antigen Affinity Purified	Protein ID	NP_002005.1
Catalog No. A301-428A-T	GeneID	2288
Lot No. A301-428A-T-1		

APPLICATIONS	WB
SPECIES REACTIVITY	Human, Mouse
PRESUMED REACTIVITY	Based on 100% sequence identity, this antibody is predicted to react with Rabbit
AMOUNT	10 µl
CONCENTRATION	200 µg/ml
STORAGE/SHELF LIFE	2 – 8°C / 1 year from date of receipt
PHYSICAL STATE	Liquid
BUFFER	Tris-buffered Saline containing 0.1% BSA and 0.09% Sodium Azide
ISOTYPE	IgG
ORIGIN	USA
PRODUCTION PROCEDURES	Antibody was affinity purified using an epitope specific to FKBP4/FKBP52 immobilized on solid support.

The epitope recognized by A301-428A-T maps to a region between residue 440 and 459 human FK506 binding protein 4 using the numbering given in entry NP_002005.1 (GeneID 2288).

APPLICATIONS Centrifuge tube to remove product from lid. Optimal working dilutions should be determined experimentally by the investigator. Prepare working dilution immediately before use.

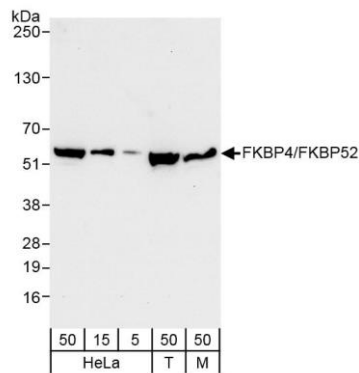
Western Blot 1:2,000 – 1:10,000

Immunoprecipitation Not recommended. Use rabbit anti-FKBP4/FKBP52 antibody A301-427A.

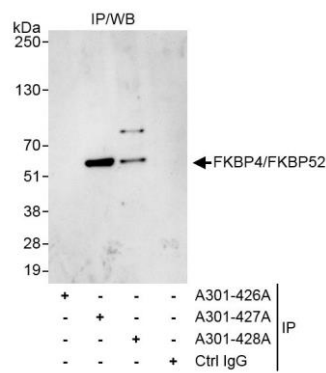
ADDITIONAL INFO <https://www.bethyl.com/product/A301-428A-T>

Use the link above to view SDS, a current list of citations, and other product specific information.

This document certifies that this product has met all of the quality control standards defined by Bethyl Laboratories, Inc.
Michael Spencer, PhD Date: June 6, 2022



Detection of human and mouse FKBP4/FKBP52 by western blot. *Samples:* Whole cell lysate from HeLa (5, 15 and 50 µg), HEK293T (T; 50 µg) and mouse NIH 3T3 (M; 50 µg) cells. *Antibodies:* Affinity purified rabbit anti-FKBP4/FKBP52 antibody A301-428A (lot A301-428A-1) used for WB at 0.04 µg/ml. *Detection:* Chemiluminescence with exposure time of 10 seconds.



Detection of human FKBP4/FKBP52 by western blot of immunoprecipitates. *Samples:* Whole cell lysate (1 mg for IP, 20% of IP loaded) from HeLa cells. *Antibodies:* Affinity purified rabbit anti-FKBP4/FKBP52 antibody A301-428A (lot A301-428A-1) used for IP at 3 µg/mg lysate. FKBP4/FKBP52 was also immunoprecipitated by rabbit anti-FKBP4/FKBP52 antibody A301-427A, which recognizes an upstream epitope. For blotting immunoprecipitated FKBP4/FKBP52, A301-428A was used at 1.0 µg/ml. *Detection:* Chemiluminescence with exposure time of 3 seconds.