



# SZABO SCANDIC

Part of Europa Biosite

## Produktinformation



Forschungsprodukte & Biochemikalien



Zellkultur & Verbrauchsmaterial



Diagnostik & molekulare Diagnostik



Laborgeräte & Service

Weitere Information auf den folgenden Seiten!  
See the following pages for more information!



### Lieferung & Zahlungsart

siehe unsere [Liefer- und Versandbedingungen](#)

### Zuschläge

- Mindermengenzuschlag
- Trockeneiszuschlag
- Gefahrgutzuschlag
- Expressversand

### SZABO-SCANDIC HandelsgmbH

Quellenstraße 110, A-1100 Wien

T. +43(0)1 489 3961-0

F. +43(0)1 489 3961-7

[mail@szabo-scandic.com](mailto:mail@szabo-scandic.com)

[www.szabo-scandic.com](http://www.szabo-scandic.com)

[linkedin.com/company/szaboscandic](https://www.linkedin.com/company/szaboscandic) 

# WNK1 Antibody

Rabbit Polyclonal

Antigen Affinity Purified	RefSeq ID	NP_061852.2
Catalog No. A301-515A-T	Uniprot ID	Q9H4A3
Lot No. 4	GeneID	65125

<b>APPLICATIONS</b>	WB, IP
<b>SPECIES REACTIVITY</b>	Human, Mouse
<b>PRESUMED REACTIVITY</b>	Based on 100% sequence identity, this antibody is predicted to react with Rat
<b>AMOUNT</b>	10 µl
<b>CONCENTRATION</b>	200 µg/ml
<b>STORAGE/SHELF LIFE</b>	2 – 8°C / 1 year from date of receipt
<b>PHYSICAL STATE</b>	Liquid
<b>BUFFER</b>	Tris-buffered Saline containing 0.1% BSA and 0.09% Sodium Azide
<b>ISOTYPE</b>	IgG
<b>ORIGIN</b>	USA
<b>PRODUCTION PROCEDURES</b>	Antibody was affinity purified using an epitope specific to WNK1 immobilized on solid support.

The epitope recognized by A301-515A-T maps to a region between residue 2100 and 2150 of human WNK lysine deficient protein kinase 1 using the numbering given in entry NP\_061852.2 (GeneID 65125).

Immunoglobulin concentration was determined using Beer's Law where 1mg/mL IgG has an A280 of 1.4.

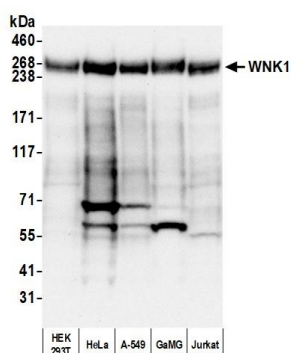
**APPLICATIONS** Centrifuge tube to remove product from lid. Optimal working dilutions should be determined experimentally by the investigator. Prepare working dilution immediately before use.

Western Blot	1:2000 – 1:10,000 (3–8% Tris-acetate gel recommended)
Immunoprecipitation	6 µg/mg lysate

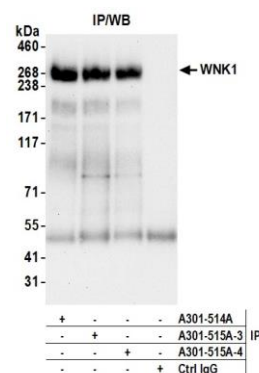
**ADDITIONAL INFO** <https://www.fortislifesciences.com/p/A301-515A-T>

Use the link above to view SDS, a current list of citations, and other product specific information.

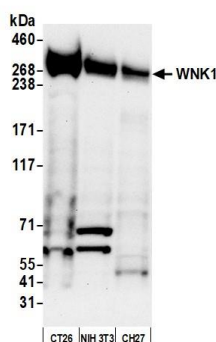
This document certifies that this product has met all of the quality control standards defined by Bethyl Laboratories, Inc.  
Michael Spencer, PhD Date: August 19, 2024



**Detection of human WNK1 by western blot.** *Samples:* Whole cell lysate (50 µg) from HEK293T, HeLa, A-549 (25 µg), GaMG, and Jurkat cells prepared using NETN lysis buffer. *Antibody:* Affinity purified rabbit anti-WNK1 antibody (A301-515A) used for WB at 0.1 µg/ml. *Detection:* Chemiluminescence with an exposure time of 30 seconds.



**Detection of human WNK1 by western blot of immunoprecipitates.** *Samples:* Whole cell lysate (1.0 mg per IP reaction; 20% of IP loaded) from HEK293T cells prepared using NETN lysis buffer. *Antibodies:* Affinity purified rabbit anti-WNK1 antibody (A301-515A) used for IP at 6 µg per reaction. WNK1 was also immunoprecipitated by a previous lot of this antibody and a second antibody against a different epitope of WNK1 (A301-514A). For blotting immunoprecipitated WNK1, A301-515A was used at 0.1 µg/ml. *Detection:* Chemiluminescence with an exposure time of 75 seconds.



**Detection of mouse WNK1 by western blot.** *Samples:* Whole cell lysate (25 µg) from CT26, NIH 3T3, and CH27 cells prepared using NETN lysis buffer. *Antibody:* Affinity purified rabbit anti-WNK1 antibody (A301-515A) used for WB at 0.1 µg/ml. *Detection:* Chemiluminescence with an exposure time of 75 seconds.