



SZABO SCANDIC

Part of Europa Biosite

Produktinformation



Forschungsprodukte & Biochemikalien



Zellkultur & Verbrauchsmaterial



Diagnostik & molekulare Diagnostik



Laborgeräte & Service

Weitere Information auf den folgenden Seiten!
See the following pages for more information!



Lieferung & Zahlungsart

siehe unsere [Liefer- und Versandbedingungen](#)

Zuschläge

- Mindermengenzuschlag
- Trockeneiszuschlag
- Gefahrgutzuschlag
- Expressversand

SZABO-SCANDIC Handels GmbH

Quellenstraße 110, A-1100 Wien

T. +43(0)1 489 3961-0

F. +43(0)1 489 3961-7

mail@szabo-scandic.com

www.szabo-scandic.com

[linkedin.com/company/szaboscandic](https://www.linkedin.com/company/szaboscandic)



RAF1 /c-RAF Antibody

Rabbit Polyclonal

Antigen Affinity Purified

Protein ID NP_002871.1

Catalog No. A301-519A-T

GeneID 5894

Lot No. A301-519A-T-2

APPLICATIONS	WB, IP
SPECIES REACTIVITY	Human, Mouse
PRESUMED REACTIVITY	Based on 100% sequence identity, this antibody is predicted to react with Rat, Bovine and Orangutan
AMOUNT	10 µl
CONCENTRATION	200 µg/ml
STORAGE/SHELF LIFE	2 – 8°C / 1 year from date of receipt
PHYSICAL STATE	Liquid
BUFFER	Tris-buffered Saline containing 0.1% BSA and 0.09% Sodium Azide
ISOTYPE	IgG
ORIGIN	USA
PRODUCTION PROCEDURES	Antibody was affinity purified using an epitope specific to RAF1 /c-RAF immobilized on solid support.

The epitope recognized by A301-519A-T maps to a region between residue 598 and 648 of human v-raf-1 murine leukemia viral oncogene homolog 1 using the numbering given in entry NP_002871.1 (GeneID 5894).

APPLICATIONS Centrifuge tube to remove product from lid. Optimal working dilutions should be determined experimentally by the investigator. Prepare working dilution immediately before use.

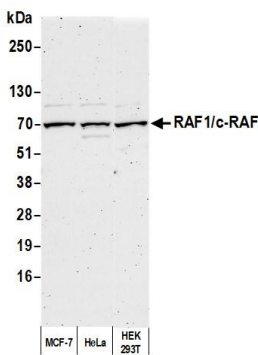
Western Blot 1:2,000 – 1:10,000

Immunoprecipitation 2 – 5 µg/mg lysate

ADDITIONAL INFO <https://www.bethyl.com/product/A301-519A-T>

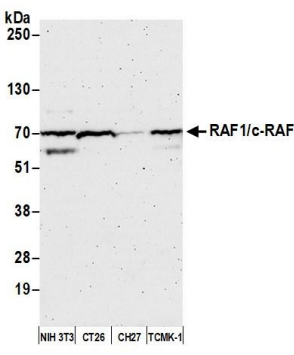
Use the link above to view SDS, a current list of citations, and other product specific information. IP-western blot protocol: https://www.bethyl.com/content/protocol_IP_WB

This document certifies that this product has met all of the quality control standards defined by Bethyl Laboratories, Inc.
Michael Spencer, PhD Date: June 6, 2022



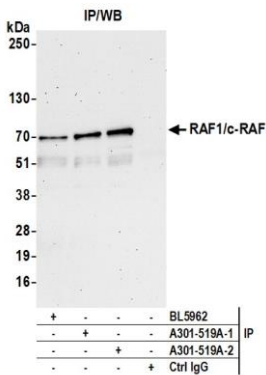
Detection of human RAF1 /c-RAF by western blot.

Samples: Whole cell lysate (50 µg) from MCF-7, HeLa, and HEK293T cells prepared using NETN lysis buffer. *Antibody:* Affinity purified rabbit anti-RAF1 /c-RAF antibody (A301-519A Lot 2) used for WB at 0.1 µg/ml. *Detection:* Chemiluminescence with an exposure time of 3 minutes.



Detection of mouse RAF1 /c-RAF by western blot.

Samples: Whole cell lysate (50 µg) from NIH 3T3, CT26, CH27, and TCMK-1 cells prepared using NETN lysis buffer. *Antibody:* Affinity purified rabbit anti-RAF1 /c-RAF antibody (A301-519A Lot 2) used for WB at 0.1 µg/ml. *Detection:* Chemiluminescence with an exposure time of 3 minutes.



Detection of human RAF1 /c-RAF by western blot of immunoprecipitates. *Samples:* Whole cell lysate (1.0 mg per IP reaction; 20% of IP loaded) from HEK293T cells prepared using NETN lysis buffer. *Antibodies:* Affinity purified rabbit anti-RAF1 /c-RAF antibody (A301-519A Lot 2) used for IP at 4 µg per reaction. RAF1 /c-RAF was also immunoprecipitated by a previous lot of this antibody (A301-519A Lot 1) and rabbit anti-RAF1 /c-RAF (BL5962). For blotting immunoprecipitated RAF1 /c-RAF, A301-519A was used at 0.1 µg/ml. *Detection:* Chemiluminescence with an exposure time of 75 seconds.