



# SZABO SCANDIC

Part of Europa Biosite

## Produktinformation



Forschungsprodukte & Biochemikalien



Zellkultur & Verbrauchsmaterial



Diagnostik & molekulare Diagnostik



Laborgeräte & Service

Weitere Information auf den folgenden Seiten!  
See the following pages for more information!



### Lieferung & Zahlungsart

siehe unsere [Liefer- und Versandbedingungen](#)

### Zuschläge

- Mindermengenzuschlag
- Trockeneiszuschlag
- Gefahrgutzuschlag
- Expressversand

### SZABO-SCANDIC HandelsgmbH

Quellenstraße 110, A-1100 Wien

T. +43(0)1 489 3961-0

F. +43(0)1 489 3961-7

[mail@szabo-scandic.com](mailto:mail@szabo-scandic.com)

[www.szabo-scandic.com](http://www.szabo-scandic.com)

[linkedin.com/company/szaboscandic](https://www.linkedin.com/company/szaboscandic) 

# ZFP106 Antibody

Rabbit Polyclonal

Antigen Affinity Purified

Protein ID NP\_071918.1

Catalog No. A301-527A-T

GeneID 64397

Lot No. A301-527A-T-2

<b>APPLICATIONS</b>	IP, IHC
<b>SPECIES REACTIVITY</b>	Human
<b>PRESUMED REACTIVITY</b>	Based on 100% sequence identity, this antibody is predicted to react with Mouse
<b>AMOUNT</b>	10 µl
<b>CONCENTRATION</b>	1000 µg/ml
<b>STORAGE/SHELF LIFE</b>	2 – 8°C / 1 year from date of receipt
<b>PHYSICAL STATE</b>	Liquid
<b>BUFFER</b>	Tris-citrate/phosphate buffer, pH 7 to 8 containing 0.09% Sodium Azide
<b>ISOTYPE</b>	IgG
<b>ORIGIN</b>	USA
<b>PRODUCTION PROCEDURES</b>	Antibody was affinity purified using an epitope specific to ZFP106 immobilized on solid support.

The epitope recognized by A301-527A-T maps to a region between residue 1833 and 1883 of human zinc finger protein 106 using the numbering given in entry NP\_071918.1 (GeneID 64397).

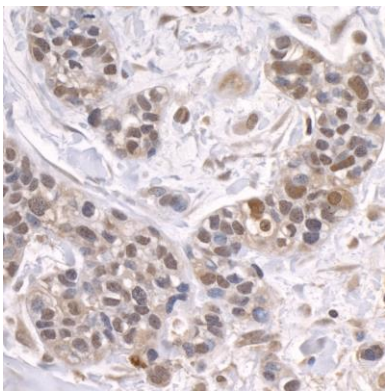
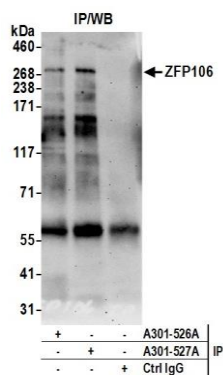
**APPLICATIONS** Centrifuge tube to remove product from lid. Optimal working dilutions should be determined experimentally by the investigator. Prepare working dilution immediately before use.

Western Blot	Not recommended. Use rabbit anti-ZFP106 antibody A301-526A.
Immunoprecipitation	2 – 10 µg/mg lysate
Immunohistochemistry	1:500 – 1:2,000. Epitope retrieval with citrate buffer pH 6.0 is recommended for FFPE tissue sections.

**ADDITIONAL INFO** <https://www.fortislifesciences.com/p/A301-527A-T>

Use the link above to view SDS, a current list of citations, and other product specific information.

This document certifies that this product has met all of the quality control standards defined by Bethyl Laboratories, Inc.  
Michael Spencer, PhD Date: August 8, 2022



**Detection of human ZFP106 by western blot of immunoprecipitates.** *Samples:* Nuclear Extract (0.5 or 1.0 mg per IP reaction; 20% of IP loaded) from HEK293T cells. *Antibodies:* Affinity purified rabbit anti-ZFP106 antibody A301-527A (lot A301-527A-2) used for IP at 6 µg per reaction. ZFP106 was also immunoprecipitated by rabbit anti-ZFP106 antibody A301-526A. For blotting immunoprecipitated ZFP106, A301-527A was used at 1 µg/ml. *Detection:* Chemiluminescence with an exposure time of 75 seconds.

**Detection of human ZFP106 by immunohistochemistry.** *Sample:* FFPE section of human breast carcinoma. *Antibody:* Affinity purified rabbit anti-ZFP106 (Cat. No. A301-527A Lot2) used at a dilution of 1:1,000 (1µg/ml). *Detection:* DAB