



# SZABO SCANDIC

Part of Europa Biosite

## Produktinformation



Forschungsprodukte & Biochemikalien



Zellkultur & Verbrauchsmaterial



Diagnostik & molekulare Diagnostik



Laborgeräte & Service

Weitere Information auf den folgenden Seiten!  
See the following pages for more information!



### Lieferung & Zahlungsart

siehe unsere [Liefer- und Versandbedingungen](#)

### Zuschläge

- Mindermengenzuschlag
- Trockeneiszuschlag
- Gefahrgutzuschlag
- Expressversand

### SZABO-SCANDIC HandelsgmbH

Quellenstraße 110, A-1100 Wien

T. +43(0)1 489 3961-0

F. +43(0)1 489 3961-7

[mail@szabo-scandic.com](mailto:mail@szabo-scandic.com)

[www.szabo-scandic.com](http://www.szabo-scandic.com)

[linkedin.com/company/szaboscandic](https://www.linkedin.com/company/szaboscandic) 

# SMG1 Antibody

Rabbit Polyclonal

Antigen Affinity Purified

RefSeq ID NP\_055907.3

Catalog No. A301-535A

Uniprot ID Q96Q15

Lot No. A301-535A-2

GeneID 23049

**APPLICATIONS** WB

**SPECIES REACTIVITY** Human

**PRESUMED REACTIVITY** Based on 100% sequence identity, this antibody is predicted to react with Mouse

**AMOUNT** 100 µl

**CONCENTRATION** 1000 µg/ml

**STORAGE/SHELF LIFE** 2 – 8°C / 1 year from date of receipt

**PHYSICAL STATE** Liquid

**BUFFER** Tris-citrate/phosphate buffer, pH 7 to 8 containing 0.09% Sodium Azide

**ISOTYPE** IgG

**ORIGIN** USA

**PRODUCTION PROCEDURES** Antibody was affinity purified using an epitope specific to SMG1 immobilized on solid support.

The epitope recognized by A301-535A maps to a region between residue 1250 and 1300 of human PI-3-Kinase-related kinase SMG1 using the numbering given in entry NP\_055907.3 (GeneID 23049).

Immunoglobulin concentration was determined by extinction coefficient: absorbance at 280 nm of 1.4 equals 1.0 mg of IgG.

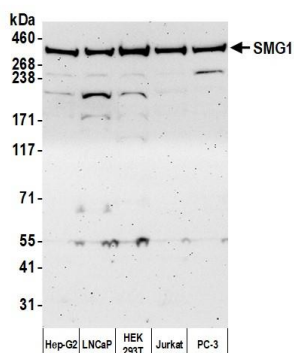
**APPLICATIONS** Centrifuge tube to remove product from lid. Optimal working dilutions should be determined experimentally by the investigator. Prepare working dilution immediately before use.

Western Blot 1:1,000 – 1:10,000

**ADDITIONAL INFO** <https://www.fortislifesciences.com/p/A301-535A>

Use the link above to view SDS, a current list of citations, and other product specific information.

This document certifies that this product has met all of the quality control standards defined by Bethyl Laboratories, Inc.  
Michael Spencer, PhD Date: November 15, 2022



**Detection of human SMG1 by western blot. *Samples:*** Whole cell lysate (50  $\mu$ g) from Hep-G2, LNCaP, HEK293T, Jurkat, and PC-3 cells prepared using NETN lysis buffer. ***Antibody:*** Affinity purified rabbit anti-SMG1 antibody (A301-535A lot 2) used for WB at 1  $\mu$ g/ml. ***Detection:*** Chemiluminescence with an exposure time of 3 minutes.