



SZABO SCANDIC

Part of Europa Biosite

Produktinformation



Forschungsprodukte & Biochemikalien



Zellkultur & Verbrauchsmaterial



Diagnostik & molekulare Diagnostik



Laborgeräte & Service

Weitere Information auf den folgenden Seiten!
See the following pages for more information!



Lieferung & Zahlungsart

siehe unsere [Liefer- und Versandbedingungen](#)

Zuschläge

- Mindermengenzuschlag
- Trockeneiszuschlag
- Gefahrgutzuschlag
- Expressversand

SZABO-SCANDIC HandelsgmbH

Quellenstraße 110, A-1100 Wien

T. +43(0)1 489 3961-0

F. +43(0)1 489 3961-7

mail@szabo-scandic.com

www.szabo-scandic.com

[linkedin.com/company/szaboscandic](https://www.linkedin.com/company/szaboscandic) 

CPSF160 Antibody

Rabbit Polyclonal

Antigen Affinity Purified	RefSeq ID	NP_037423.2
Catalog No. A301-580A	Uniprot ID	Q10570
Lot No. 3	GeneID	29894

APPLICATIONS	WB, IP, IHC
SPECIES REACTIVITY	Human, Mouse
PRESUMED REACTIVITY	Based on 100% sequence identity, this antibody is predicted to react with Bovine
AMOUNT	100 µl
CONCENTRATION	200 µg/ml
STORAGE/SHELF LIFE	2 – 8°C / 1 year from date of receipt
PHYSICAL STATE	Liquid
BUFFER	Tris-buffered Saline containing 0.1% BSA and 0.09% Sodium Azide
ISOTYPE	IgG
ORIGIN	USA
PRODUCTION PROCEDURES	Antibody was affinity purified using an epitope specific to CPSF160 immobilized on solid support.

The epitope recognized by A301-580A maps to a region between residue 1392 and 1442 of human cleavage and polyadenylation specific factor 1, 160kD subunit using the numbering given in entry NP_037423.1 (GeneID 29894).

Immunoglobulin concentration was determined using Beer's Law where 1mg/mL IgG has an A280 of 1.4.

APPLICATIONS Centrifuge tube to remove product from lid. Optimal working dilutions should be determined experimentally by the investigator. Prepare working dilution immediately before use.

Western Blot	1:2000 – 1:10,000
Immunoprecipitation	6 µg/mg lysate
Immunohistochemistry	1:100 to 1:500. Epitope retrieval with citrate buffer pH6.0 is recommended for FFPE tissue sections.

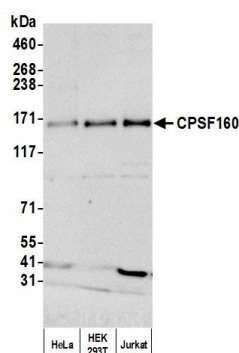
IHC HUMAN CONTROLS Anaplastic Thyroid Carcinoma, Bladder Cell Carcinoma, Breast Carcinoma, Colon Carcinoma, Ewing Sarcoma, Linitis Plastica Stomach Cancer, Ovarian Carcinoma, Prostate Carcinoma, Skin Basal Cell Carcinoma, Stomach Adenocarcinoma, Testicular Seminoma

IHC MOUSE CONTROLS Renal Cell Carcinoma, Teratoma, CT26 cells

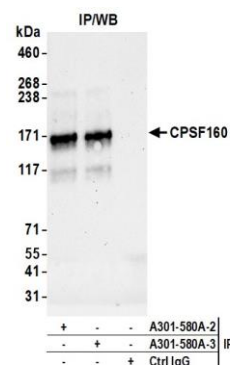
ADDITIONAL INFO <https://www.fortislifesciences.com/p/A301-580A>

Use the link above to view SDS, a current list of citations, and other product specific information.

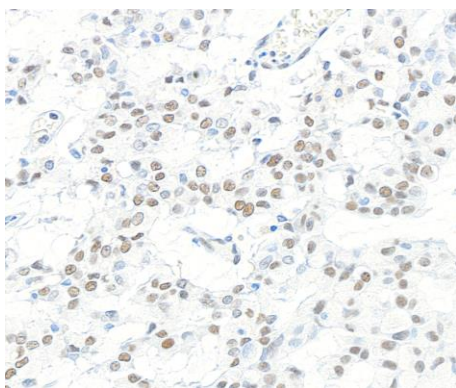
This document certifies that this product has met all of the quality control standards defined by Bethyl Laboratories, Inc.
Michael Spencer, PhD Date: May 14, 2024



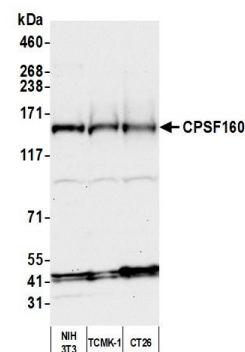
Detection of human CPSF160 by western blot. *Samples:* Whole cell lysate (10 µg) from HeLa, HEK293T, and Jurkat cells prepared using NETN lysis buffer. *Antibody:* Affinity purified rabbit anti-CPSF160 antibody (A301-580A lot 3) used for WB at 0.1 µg/ml. *Detection:* Chemiluminescence with an exposure time of 3 minutes.



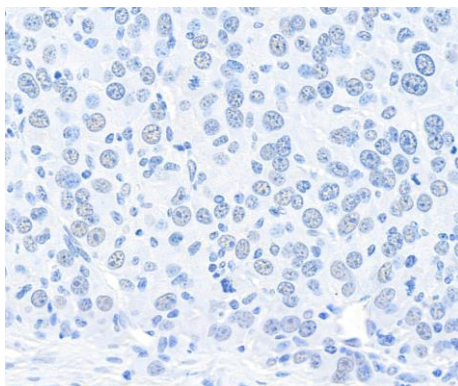
Detection of human CPSF160 by western blot of immunoprecipitates. *Samples:* Whole cell lysate (1.0 mg per IP reaction; 20% of IP loaded) from HeLa cells prepared using NETN lysis buffer. *Antibodies:* Affinity purified rabbit anti-CPSF160 antibody (A301-580A lot 3) used for IP at 6 µg per reaction. CPSF160 was also immunoprecipitated by a previous lot of this antibody (A301-580A lot 2). For blotting immunoprecipitated CPSF160, A301-580A was used at 1 µg/ml. *Detection:* Chemiluminescence with an exposure time of 30 seconds.



Detection of human CPSF160 by immunohistochemistry. *Sample:* FFPE section of human ovarian carcinoma. *Antibody:* Affinity purified rabbit anti-CPSF160 (A301-580A lot 3) used at a dilution of 1:200 (1 µg/ml). *Detection:* DAB



Detection of mouse CPSF160 by western blot. *Samples:* Whole cell lysate (50 µg) from NIH 3T3, TCMK-1, and CT26 cells prepared using NETN lysis buffer. *Antibody:* Affinity purified rabbit anti-CPSF160 antibody (A301-580A lot 3) used for WB at 0.1 µg/ml. *Detection:* Chemiluminescence with an exposure time of 30 seconds.

**Detection of mouse CPSF160 by immunohistochemistry.**

Sample: FFPE section of mouse renal cell carcinoma.

Antibody: Affinity purified rabbit anti-CPSF160 (A301-580A lot 3) used at a dilution of 1:200 (1 µg/ml).

Detection: DAB