



SZABO SCANDIC

Part of Europa Biosite

Produktinformation



Forschungsprodukte & Biochemikalien



Zellkultur & Verbrauchsmaterial



Diagnostik & molekulare Diagnostik



Laborgeräte & Service

Weitere Information auf den folgenden Seiten!
See the following pages for more information!



Lieferung & Zahlungsart

siehe unsere [Liefer- und Versandbedingungen](#)

Zuschläge

- Mindermengenzuschlag
- Trockeneiszuschlag
- Gefahrgutzuschlag
- Expressversand

SZABO-SCANDIC HandelsgmbH

Quellenstraße 110, A-1100 Wien

T. +43(0)1 489 3961-0

F. +43(0)1 489 3961-7

mail@szabo-scandic.com

www.szabo-scandic.com

[linkedin.com/company/szaboscandic](https://www.linkedin.com/company/szaboscandic)



PBRM1 Antibody

Rabbit Polyclonal

Antigen Affinity Purified

Protein ID AAP34197.1

Catalog No. A301-591A-T

GeneID 55193

Lot No. A301-591A-T-5

| | |
|------------------------------|---|
| APPLICATIONS | WB, IP, IHC |
| SPECIES REACTIVITY | Human, Mouse |
| AMOUNT | 10 µl |
| CONCENTRATION | 1000 µg/ml |
| STORAGE/SHELF LIFE | 2 – 8°C / 1 year from date of receipt |
| PHYSICAL STATE | Liquid |
| BUFFER | Tris-citrate/phosphate buffer, pH 7 to 8 containing 0.09% Sodium Azide |
| ISOTYPE | IgG |
| ORIGIN | USA |
| PRODUCTION PROCEDURES | Antibody was affinity purified using an epitope specific to PB1 /BAF180 immobilized on solid support. |

The epitope recognized by A301-591A-T maps to a region between residue 1639 and 1689 of human polybromo 1 (BRG1-associated factor 180) using the numbering given in entry AAP34197.1 (GeneID 55193).

Immunoglobulin concentration was determined by extinction coefficient: absorbance at 280 nm of 1.4 equals 1.0 mg of IgG.

APPLICATIONS Centrifuge tube to remove product from lid. Optimal working dilutions should be determined experimentally by the investigator. Prepare working dilution immediately before use.

Western Blot 1:2,000 – 1:10,000

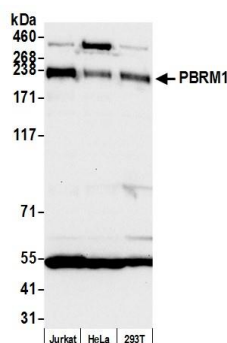
Immunoprecipitation 2 – 10 µg/mg lysate

Immunohistochemistry 1:1000 to 1:5,000. Epitope retrieval with citrate buffer pH6.0 is recommended for FFPE tissue sections.

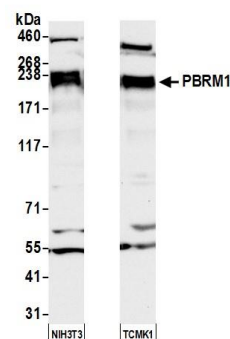
ADDITIONAL INFO <https://www.bethyl.com/product/A301-591A-T>

Use the link above to view SDS, a current list of citations, and other product specific information.
IP-western blot protocol: https://www.bethyl.com/content/protocol_IP_WB

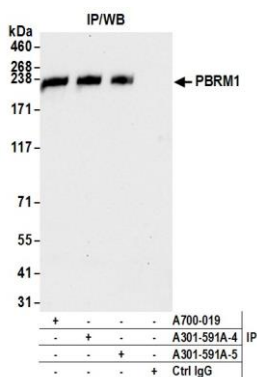
This document certifies that this product has met all of the quality control standards defined by Bethyl Laboratories, Inc.
Michael Spencer, PhD Date: June 6, 2022



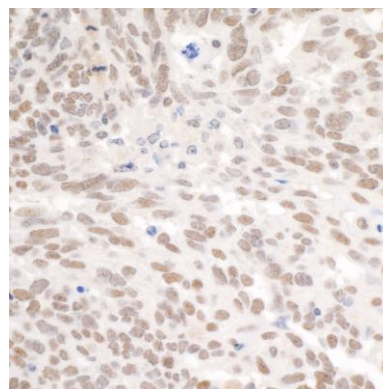
Detection of human PBRM1 by western blot. *Samples:* Whole cell lysate (50 µg) from Jurkat, HeLa, and HEK293T cells prepared using NETN lysis buffer. *Antibody:* Affinity purified rabbit anti-PBRM1 antibody A301-591A (lot A301-591A-5) used for WB at 0.1 µg/ml. *Detection:* Chemiluminescence with an exposure time of 10 seconds.



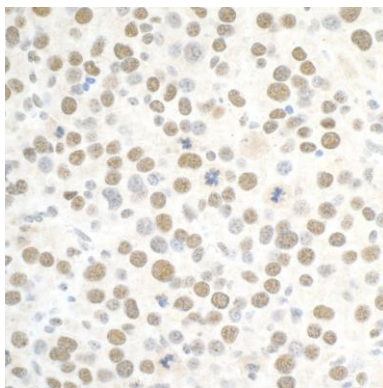
Detection of mouse PBRM1 by western blot. *Samples:* Whole cell lysate (50 µg) from NIH 3T3 and TCMK-1 prepared using NETN lysis buffer. *Antibody:* Affinity purified rabbit anti-PBRM1 antibody A301-591A (lot A301-591A-5) used for WB at 0.1 µg/ml. *Detection:* Chemiluminescence with an exposure time of 10 seconds.



Detection of human PBRM1 by western blot of immunoprecipitates. *Samples:* Whole cell lysate (1.0 mg per IP reaction; 20% of IP loaded) from Jurkat cells prepared using NETN lysis buffer. *Antibodies:* Affinity purified rabbit anti-PBRM1 antibody A301-591A (lot A301-591A-5) used for IP at 6 µg per reaction. PBRM1 was also immunoprecipitated by a previous lot of this antibody (lot A301-591A-4) and rabbit anti-PBRM1 recombinant monoclonal antibody A700-019. For blotting immunoprecipitated PBRM1, A700-019 was used at 0.1 µg/ml. *Detection:* Chemiluminescence with an exposure time of 10 seconds.



Detection of human PBRM1 by immunohistochemistry. *Sample:* FFPE section of human ovarian carcinoma. *Antibody:* Affinity purified rabbit anti-PBRM1 (Cat. No. A301-591A Lot 5) used at a dilution of 1:5,000 (0.2 µg/ml). *Detection:* DAB.

**Detection of mouse PBRM1 by immunohistochemistry.**

Sample: FFPE section of mouse renal cell carcinoma.

Antibody: Affinity purified rabbit anti-PBRM1 (Cat. No. A301-591A Lot 5) used at a dilution of 1:5,000 (0.2µg/ml).

Detection: DAB.