



# SZABO SCANDIC

Part of Europa Biosite

## Produktinformation



Forschungsprodukte & Biochemikalien



Zellkultur & Verbrauchsmaterial



Diagnostik & molekulare Diagnostik



Laborgeräte & Service

Weitere Information auf den folgenden Seiten!  
See the following pages for more information!



### Lieferung & Zahlungsart

siehe unsere [Liefer- und Versandbedingungen](#)

### Zuschläge

- Mindermengenzuschlag
- Trockeneiszuschlag
- Gefahrgutzuschlag
- Expressversand

### SZABO-SCANDIC HandelsgmbH

Quellenstraße 110, A-1100 Wien

T. +43(0)1 489 3961-0

F. +43(0)1 489 3961-7

[mail@szabo-scandic.com](mailto:mail@szabo-scandic.com)

[www.szabo-scandic.com](http://www.szabo-scandic.com)

[linkedin.com/company/szaboscandic](https://www.linkedin.com/company/szaboscandic)



# SMARCD2/BAF60b Antibody

Rabbit Polyclonal

Antigen Affinity Purified	RefSeq ID	NP_003068.2
Catalog No. A301-596A	Uniprot ID	Q92925
Lot No. A301-596A-2	GeneID	6603

<b>APPLICATIONS</b>	WB
<b>SPECIES REACTIVITY</b>	Human
<b>PRESUMED REACTIVITY</b>	Based on 100% sequence identity, this antibody is predicted to react with Mouse, Rat and Bovine
<b>AMOUNT</b>	100 µl
<b>CONCENTRATION</b>	200 µg/ml
<b>STORAGE/SHELF LIFE</b>	2 – 8°C / 1 year from date of receipt
<b>PHYSICAL STATE</b>	Liquid
<b>BUFFER</b>	Tris-buffered Saline containing 0.1% BSA and 0.09% Sodium Azide
<b>ISOTYPE</b>	IgG
<b>ORIGIN</b>	USA
<b>PRODUCTION PROCEDURES</b>	Antibody was affinity purified using an epitope specific to SMARCD2/BAF60b immobilized on solid support.

The epitope recognized by A301-596A maps to a region between residue 425 and 475 of human SWI/SNF related, matrix associated, actin dependent regulator of chromatin, subfamily d, member 2 (mammalian chromatin remodeling complex BRG1-associated factor 60B) using the numbering given in entry NP\_003068.2 (GeneID 6603).

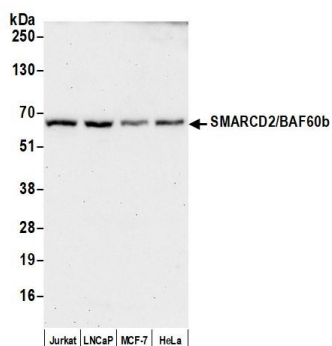
Immunoglobulin concentration was determined by extinction coefficient: absorbance at 280 nm of 1.4 equals 1.0 mg of IgG.

<b>APPLICATIONS</b>	Centrifuge tube to remove product from lid. Optimal working dilutions should be determined experimentally by the investigator. Prepare working dilution immediately before use.
---------------------	---

Western Blot 1:2,000 – 1:10,000

<b>ADDITIONAL INFO</b>	<a href="https://www.fortislifesciences.com/p/A301-596A">https://www.fortislifesciences.com/p/A301-596A</a> Use the link above to view SDS, a current list of citations, and other product specific information.
------------------------	---

This document certifies that this product has met all of the quality control standards defined by Bethyl Laboratories, Inc.  
Michael Spencer, PhD Date: March 6, 2023

**Detection of human SMARCD2/BAF60b by western blot.**

*Samples:* Whole cell lysate (50 µg) from Jurkat, LNCaP, MCF-7, and HeLa cells prepared using NETN lysis buffer.

*Antibody:* Affinity purified rabbit anti-SMARCD2/BAF60b antibody (A301-596A lot 2) used for WB at 0.1 µg/ml.

*Detection:* Chemiluminescence with an exposure time of 3 minutes.