



SZABO SCANDIC

Part of Europa Biosite

Produktinformation



Forschungsprodukte & Biochemikalien



Zellkultur & Verbrauchsmaterial



Diagnostik & molekulare Diagnostik



Laborgeräte & Service

Weitere Information auf den folgenden Seiten!
See the following pages for more information!



Lieferung & Zahlungsart

siehe unsere [Liefer- und Versandbedingungen](#)

Zuschläge

- Mindermengenzuschlag
- Trockeneiszuschlag
- Gefahrgutzuschlag
- Expressversand

SZABO-SCANDIC HandelsgmbH

Quellenstraße 110, A-1100 Wien

T. +43(0)1 489 3961-0

F. +43(0)1 489 3961-7

mail@szabo-scandic.com

www.szabo-scandic.com

[linkedin.com/company/szaboscandic](https://www.linkedin.com/company/szaboscandic) 

SF3b145/SAP145 Antibody

Rabbit Polyclonal

Antigen Affinity Purified Protein ID AAA97461.1

Catalog No. A301-605A-T GeneID 10992

Lot No. A301-605A-T-1

APPLICATIONS WB, IP, IHC

SPECIES REACTIVITY Human

AMOUNT 10 µl

CONCENTRATION 200 µg/ml

STORAGE/SHELF LIFE 2 – 8°C / 1 year from date of receipt

PHYSICAL STATE Liquid

BUFFER Tris-buffered Saline containing 0.1% BSA and 0.09% Sodium Azide

ISOTYPE IgG

ORIGIN USA

PRODUCTION PROCEDURES Antibody was affinity purified using an epitope specific to SF3b145/SAP145 immobilized on solid support.

The epitope recognized by A301-605A-T maps to a region between residue 775 and 825 of human splicing factor 3b, subunit 2, 145kDa (spliceosome associated protein 145) using the numbering given in entry AAA97461.1 (GeneID 10992).

APPLICATIONS Centrifuge tube to remove product from lid. Optimal working dilutions should be determined experimentally by the investigator. Prepare working dilution immediately before use.

Western Blot 1:2,000 – 1:10,000

Immunoprecipitation 2 – 5 µg/mg lysate

Immunohistochemistry 1:100 – 1:500. Epitope retrieval with citrate buffer pH 6.0 is recommended for FFPE tissue sections.

ADDITIONAL INFO <https://www.bethyl.com/product/A301-605A-T>

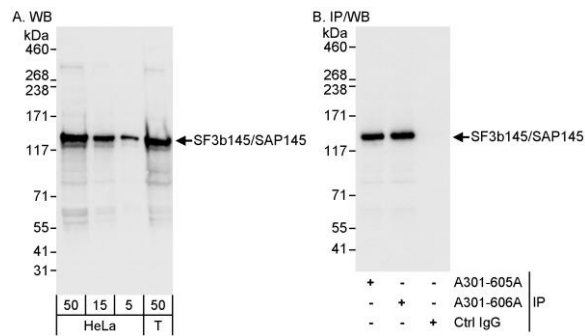
Use the link above to view SDS, a current list of citations, and other product specific information.

IP-western blot protocol: https://www.bethyl.com/content/protocol_IP_WB

This document certifies that this product has met all of the quality control standards defined by Bethyl Laboratories, Inc.

Michael Spencer, PhD

Date: June 6, 2022



Detection of human SF3b145/SAP145 by western blot and immunoprecipitation. *Samples:* Whole cell lysate from HeLa (5, 15 and 50 µg for WB; 1 mg for IP, 20% of IP loaded) and HEK293T (T; 50 µg) cells. *Antibodies:* Affinity purified rabbit anti-SF3b145/SAP145 antibody A301-605A used for WB at 0.04 µg/ml (A) and 0.1 µg/ml (B) and used for IP at 3 µg/mg lysate. SF3b145/SAP145 was also immunoprecipitated by rabbit anti-SF3b145/SAP145 antibody A301-606A, which recognizes a downstream epitope. *Detection:* Chemiluminescence with exposure times of 1 second (A and B).

Detection of human SF3b145/SAP145 by immunohistochemistry. *Sample:* FFPE section of human breast carcinoma. *Antibody:* Affinity purified rabbit anti-SF3b145/SAP145 (Cat. No. A301-605A Lot1) used at a dilution of 1:200 (1 µg/ml). *Detection:* DAB

