



# SZABO SCANDIC

Part of Europa Biosite

## Produktinformation



Forschungsprodukte & Biochemikalien



Zellkultur & Verbrauchsmaterial



Diagnostik & molekulare Diagnostik



Laborgeräte & Service

Weitere Information auf den folgenden Seiten!  
See the following pages for more information!



### Lieferung & Zahlungsart

siehe unsere [Liefer- und Versandbedingungen](#)

### Zuschläge

- Mindermengenzuschlag
- Trockeneiszuschlag
- Gefahrgutzuschlag
- Expressversand

### SZABO-SCANDIC HandelsgmbH

Quellenstraße 110, A-1100 Wien

T. +43(0)1 489 3961-0

F. +43(0)1 489 3961-7

[mail@szabo-scandic.com](mailto:mail@szabo-scandic.com)

[www.szabo-scandic.com](http://www.szabo-scandic.com)

[linkedin.com/company/szaboscandic](https://www.linkedin.com/company/szaboscandic) 

# SFRS18/SRrp130 Antibody

Rabbit Polyclonal

Antigen Affinity Purified Protein ID NP\_056306.1

Catalog No. A301-609A-T GenelD 25957

Lot No. A301-609A-T-1

---

|                              |  |
|------------------------------|--|
| <b>APPLICATIONS</b>          | IP   |
| <b>SPECIES REACTIVITY</b>    | Human  |
| <b>PRESUMED REACTIVITY</b>   | Based on 100% sequence identity, this antibody is predicted to react with Mouse                          |
| <b>AMOUNT</b>                | 10 µl  |
| <b>CONCENTRATION</b>         | 1000 µg/ml   |
| <b>STORAGE/SHELF LIFE</b>    | 2 – 8°C / 1 year from date of receipt  |
| <b>PHYSICAL STATE</b>        | Liquid   |
| <b>BUFFER</b>                | Tris-citrate/phosphate buffer, pH 7 to 8 containing 0.09% Sodium Azide                                   |
| <b>ISOTYPE</b>               | IgG  |
| <b>ORIGIN</b>                | USA  |
| <b>PRODUCTION PROCEDURES</b> | Antibody was affinity purified using an epitope specific to SFRS18/SRrp130 immobilized on solid support. |

The epitope recognized by A301-609A-T maps to a region between residue 200 to 250 of human splicing factor, arginine/serine-rich 18 (splicing factor, arginine/serine-rich 130) using the numbering given in entry NP\_056306.1 (GeneID 25957).

Immunoglobulin concentration was determined by extinction coefficient: absorbance at 280 nm of 1.4 equals 1.0 mg of IgG.

**APPLICATIONS** Centrifuge tube to remove product from lid. Optimal working dilutions should be determined experimentally by the investigator. Prepare working dilution immediately before use.

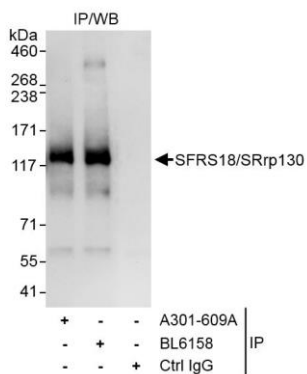
Western Blot Not recommended. Use rabbit anti-SFRS18/SRrp130 antibody A301-610A.

Immunoprecipitation 2 – 5 µg/mg lysate

**ADDITIONAL INFO** <https://www.bethyl.com/product/A301-609A-T>

Use the link above to view SDS, a current list of citations, and other product specific information. IP-western blot protocol: [https://www.bethyl.com/content/protocol\\_IP\\_WB](https://www.bethyl.com/content/protocol_IP_WB)

This document certifies that this product has met all of the quality control standards defined by Bethyl Laboratories, Inc.  
Michael Spencer, PhD Date: June 6, 2022



**Detection of human SFRS18/SRrp130 by western blot of immunoprecipitates.** *Samples:* Whole cell lysate (1 mg for IP, 20% of IP loaded) from HeLa cells. *Antibodies:* Affinity purified rabbit anti-SFRS18/SRrp130 antibody A301-609A used for IP at 3  $\mu\text{g}/\text{mg}$  lysate. SFRS18/SRrp130 was also immunoprecipitated by rabbit anti-SFRS18/SRrp130 antibody BL6158, which recognizes a downstream epitope. For blotting immunoprecipitated SFRS18/SRrp130, BL6158 was used at 1  $\mu\text{g}/\text{ml}$ . *Detection:* Chemiluminescence with an exposure time of 10 seconds.