



SZABO SCANDIC

Part of Europa Biosite

Produktinformation



Forschungsprodukte & Biochemikalien



Zellkultur & Verbrauchsmaterial



Diagnostik & molekulare Diagnostik



Laborgeräte & Service

Weitere Information auf den folgenden Seiten!
See the following pages for more information!



Lieferung & Zahlungsart

siehe unsere [Liefer- und Versandbedingungen](#)

Zuschläge

- Mindermengenzuschlag
- Trockeneiszuschlag
- Gefahrgutzuschlag
- Expressversand

SZABO-SCANDIC HandelsgmbH

Quellenstraße 110, A-1100 Wien

T. +43(0)1 489 3961-0

F. +43(0)1 489 3961-7

mail@szabo-scandic.com

www.szabo-scandic.com

[linkedin.com/company/szaboscandic](https://www.linkedin.com/company/szaboscandic) 

CENP-F/Mitosin Antibody

Rabbit Polyclonal

Antigen Affinity Purified

Protein ID AAA82889.1

Catalog No. A301-611A

GeneID 1063

Lot No. A301-611A-1



APPLICATIONS	IP, ICC-IF
SPECIES REACTIVITY	Human
AMOUNT	100 µl
CONCENTRATION	1000 µg/ml
STORAGE/SHELF LIFE	2 – 8° C / 1 year from date of receipt
PHYSICAL STATE	Liquid
BUFFER	Tris-citrate/phosphate buffer, pH 7 to 8 containing 0.09% Sodium Azide
ISOTYPE	IgG
ORIGIN	USA
PRODUCTION PROCEDURES	Antibody was affinity purified using an epitope specific to CENP-F/Mitosin immobilized on solid support.

The epitope recognized by A301-611A maps to a region between residue 1800 and 1850 of human centromere protein F (Mitosin) using the numbering given in entry AAA82889.1 (GeneID 1063).

Immunoglobulin concentration was determined by extinction coefficient: absorbance at 280 nm of 1.4 equals 1.0 mg of IgG.

APPLICATIONS Centrifuge tube to remove product from lid. Optimal working dilutions should be determined experimentally by the investigator. Prepare working dilution immediately before use.

Western Blot Not recommended. Use rabbit anti-CENP-F/Mitosin antibody A301-617A.

Immunoprecipitation 2 – 5 µg/mg lysate

Immunofluorescence (ICC) 1:500 – 1:2,000. Acetone fixation is recommended.

APPLICATION NOTES Western blot of immunoprecipitates performed using Normal Pig Serum (Cat. No. S100-020), Goat anti-Rabbit Light Chain HRP Conjugate (Cat. No. A120-113P) and 3-8% SDS-PAGE (link to IP-western blot protocol in Additional Info section below).

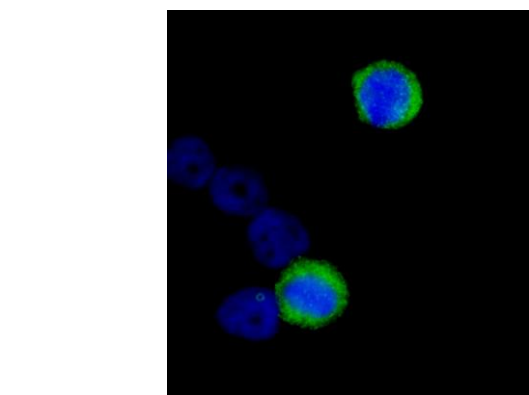
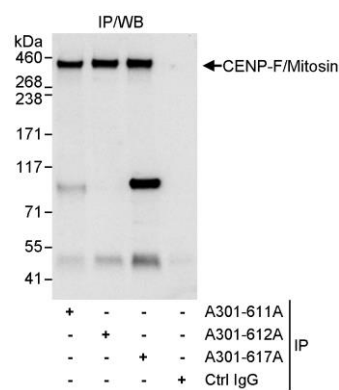
IHC HUMAN CONTROLS HeLa Cells

ADDITIONAL INFO <https://www.bethyl.com/product/A301-611A>

Use the link above to view SDS, a current list of citations, and other product specific information.

IP-western blot protocol: https://www.bethyl.com/content/protocol_IP_WB

This document certifies that this product has met all of the quality control standards defined by Bethyl Laboratories, Inc.
Eric McIntush, PhD | Chief Scientific Officer Date: June 21, 2019



Detection of human CENP-F/Mitotin by western blot of immunoprecipitates. *Samples:* Whole cell lysate (1 mg for IP, 20% of IP loaded) from HeLa cells. *Antibodies:* Affinity purified rabbit anti-CENP-F/Mitotin antibody A301-611A used for IP at 3 µg/mg lysate. CENP-F/Mitotin was also immunoprecipitated by rabbit anti-CENP-F/Mitotin antibodies A301-612A and A301-617A, which recognize downstream epitopes. For blotting immunoprecipitated CENP-F/Mitotin, A301-617A was used at 1 µg/ml. *Detection:* Chemiluminescence with an exposure time of 3 seconds.

Detection of human CENP-F/Mitotin by immunocytochemistry. *Samples:* Acetone-fixed HeLa cells. *Antibody:* Affinity purified rabbit anti-CENP-F/Mitotin (Cat. No. A301-611A) used at a dilution of 1:1,000 (1 µg/ml). *Detection:* Anti-rabbit IgG-FITC conjugated (Cat. No. A120-101F) used at a dilution of 1:100.