



SZABO SCANDIC

Part of Europa Biosite

Produktinformation



Forschungsprodukte & Biochemikalien



Zellkultur & Verbrauchsmaterial



Diagnostik & molekulare Diagnostik



Laborgeräte & Service

Weitere Information auf den folgenden Seiten!
See the following pages for more information!



Lieferung & Zahlungsart

siehe unsere [Liefer- und Versandbedingungen](#)

Zuschläge

- Mindermengenzuschlag
- Trockeneiszuschlag
- Gefahrgutzuschlag
- Expressversand

SZABO-SCANDIC HandelsgmbH

Quellenstraße 110, A-1100 Wien

T. +43(0)1 489 3961-0

F. +43(0)1 489 3961-7

mail@szabo-scandic.com

www.szabo-scandic.com

[linkedin.com/company/szaboscandic](https://www.linkedin.com/company/szaboscandic) 

TReP-132/TRERF1 Antibody

Rabbit Polyclonal

Antigen Affinity Purified	Protein ID	NP_277037.1
Catalog No. A301-631A-T	GeneID	55809
Lot No. A301-631A-T-2		

APPLICATIONS	WB, IP, IHC
SPECIES REACTIVITY	Human
AMOUNT	10 µl
CONCENTRATION	1000 µg/ml
STORAGE/SHELF LIFE	2 – 8°C / 1 year from date of receipt
PHYSICAL STATE	Liquid
BUFFER	Tris-citrate/phosphate buffer, pH 7 to 8 containing 0.09% Sodium Azide
ISOTYPE	IgG
ORIGIN	USA
PRODUCTION PROCEDURES	Antibody was affinity purified using an epitope specific to TReP-132/TRERF1 immobilized on solid support.

The epitope recognized by A301-631A-T maps to a region between residue 1150 and 1200 of human transcriptional regulating protein 132 (transcriptional regulating factor 1) using the numbering given in entry NP_277037.1 (GeneID 55809).

APPLICATIONS Centrifuge tube to remove product from lid. Optimal working dilutions should be determined experimentally by the investigator. Prepare working dilution immediately before use.

Western Blot 1:2,000 – 1:10,000

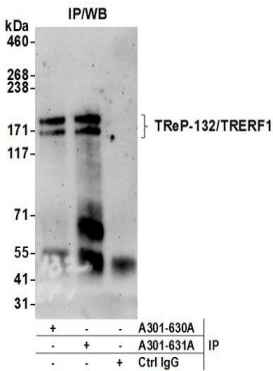
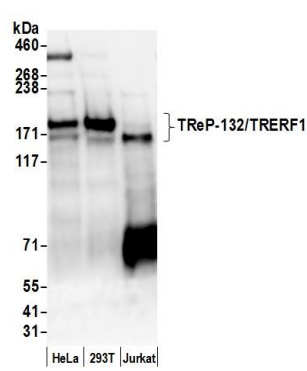
Immunoprecipitation 2 – 5 µg/mg lysate

Immunohistochemistry 1:2,000 – 1:10,000. Epitope retrieval with citrate buffer pH 6.0 is recommended for FFPE tissue sections.

ADDITIONAL INFO <https://www.bethyl.com/product/A301-631A-T>

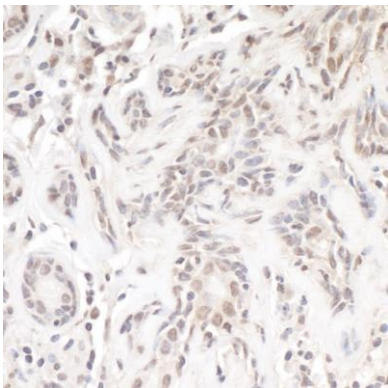
Use the link above to view SDS, a current list of citations, and other product specific information.
IP-western blot protocol: https://www.bethyl.com/content/protocol_IP_WB

This document certifies that this product has met all of the quality control standards defined by Bethyl Laboratories, Inc.
Michael Spencer, PhD Date: June 6, 2022



Detection of human TReP-132/TRERF1 by western blot.
Samples: Whole cell lysate (50 µg) from HeLa, HEK293T, and Jurkat cells prepared using NETN lysis buffer.
Antibody: Affinity purified rabbit anti-TReP-132/TRERF1 antibody A301-631A (lot A301-631A-2) used for WB at 0.1 µg/ml.
Detection: Chemiluminescence with an exposure time of 3 minutes.

Detection of human TReP-132/TRERF1 by western blot of immunoprecipitates. *Samples:* Whole cell lysate (1.0 mg per IP reaction; 20% of IP loaded) from HEK293T cells prepared using NETN lysis buffer. *Antibodies:* Affinity purified rabbit anti-TReP-132/TRERF1 antibody A301-631A (lot A301-631A-2) used for IP at 3 µg per reaction. TReP-132/TRERF1 was also immunoprecipitated by rabbit anti-TReP-132/TRERF1 antibody A301-630A. For blotting immunoprecipitated TReP-132/TRERF1, A301-631A was used at 1 µg/ml. *Detection:* Chemiluminescence with an exposure time of 3 minutes.



Detection of human TReP-132/TRERF1 by immunohistochemistry. *Sample:* FFPE section of human ovarian carcinoma. *Antibody:* Affinity purified rabbit anti-TReP-132/TRERF1 (Cat. No. A301-631A Lot2) used at a dilution of 1:5,000 (0.2µg/ml). *Detection:* DAB