



SZABO SCANDIC

Part of Europa Biosite

Produktinformation



Forschungsprodukte & Biochemikalien



Zellkultur & Verbrauchsmaterial



Diagnostik & molekulare Diagnostik



Laborgeräte & Service

Weitere Information auf den folgenden Seiten!
See the following pages for more information!



Lieferung & Zahlungsart

siehe unsere [Liefer- und Versandbedingungen](#)

Zuschläge

- Mindermengenzuschlag
- Trockeneiszuschlag
- Gefahrgutzuschlag
- Expressversand

SZABO-SCANDIC HandelsgmbH

Quellenstraße 110, A-1100 Wien

T. +43(0)1 489 3961-0

F. +43(0)1 489 3961-7

mail@szabo-scandic.com

www.szabo-scandic.com

[linkedin.com/company/szaboscandic](https://www.linkedin.com/company/szaboscandic) 

Pol Lambda Antibody

Rabbit Polyclonal

Antigen Affinity Purified

Catalog No. A301-640A

Lot No. A301-640A-3

Protein ID NP_037406.1

GeneID 27343



APPLICATIONS	WB, IP
SPECIES REACTIVITY	Human
AMOUNT	100 µl
CONCENTRATION	200 µg/ml
STORAGE/SHELF LIFE	2 – 8° C / 1 year from date of receipt
PHYSICAL STATE	Liquid
BUFFER	Tris-buffered Saline containing 0.1% BSA and 0.09% Sodium Azide
ISOTYPE	IgG
ORIGIN	USA
PRODUCTION PROCEDURES	Antibody was affinity purified using an epitope specific to Pol Lambda immobilized on solid support.

The epitope recognized by A301-640A maps to a region between residue 150 and 200 of human polymerase (DNA directed), lambda using the numbering given in entry NP_037406.1 (GeneID 27343).

Immunoglobulin concentration was determined by extinction coefficient: absorbance at 280 nm of 1.4 equals 1.0 mg of IgG.

APPLICATIONS Centrifuge tube to remove product from lid. Optimal working dilutions should be determined experimentally by the investigator. Prepare working dilution immediately before use.

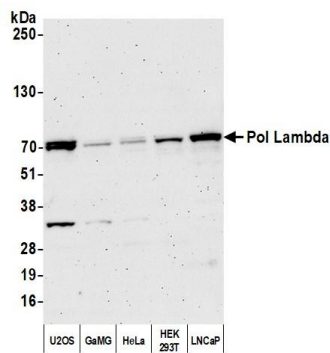
Western Blot 1:2,000 – 1:10,000

Immunoprecipitation 2 – 10 µg/mg lysate

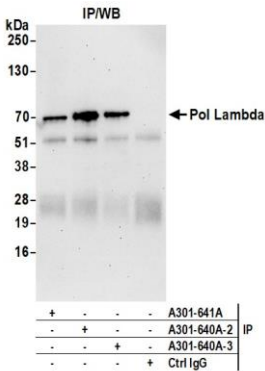
ADDITIONAL INFO <https://www.bethyl.com/product/A301-640A>

Use the link above to view SDS, a current list of citations, and other product specific information.
IP-western blot protocol: https://www.bethyl.com/content/protocol_IP_WB

This document certifies that this product has met all of the quality control standards defined by Bethyl Laboratories, Inc.
Brian McWilliams, PhD Date: June 22, 2021



Detection of human Pol Lambda by western blot. *Samples:* Whole cell lysate (50 µg) from U2OS, GaMG, HeLa, HEK293T, and LNCaP cells prepared using NETN lysis buffer. *Antibody:* Affinity purified rabbit anti-Pol Lambda antibody (A301-640A lot 3) used for WB at 0.04 µg/ml. *Detection:* Chemiluminescence with an exposure time of 3 minutes.



Detection of human Pol Lambda by western blot of immunoprecipitates. *Samples:* Whole cell lysate (1.0 mg per IP reaction; 20% of IP loaded) from HEK293T cells prepared using NETN lysis buffer. *Antibodies:* Affinity purified rabbit anti-Pol Lambda antibody (A301-640A lot 3) used for IP at 6 µg per reaction. Pol Lambda was also immunoprecipitated by a previous lot of this antibody (A301-640A lot 2) and a second antibody against a different epitope of Pol Lambda (A301-641A). For blotting immunoprecipitated Pol Lambda, A301-640A was used at 0.04 µg/ml. *Detection:* Chemiluminescence with an exposure time of 30 seconds.