



SZABO SCANDIC

Part of Europa Biosite

Produktinformation



Forschungsprodukte & Biochemikalien



Zellkultur & Verbrauchsmaterial



Diagnostik & molekulare Diagnostik



Laborgeräte & Service

Weitere Information auf den folgenden Seiten!
See the following pages for more information!



Lieferung & Zahlungsart

siehe unsere [Liefer- und Versandbedingungen](#)

Zuschläge

- Mindermengenzuschlag
- Trockeneiszuschlag
- Gefahrgutzuschlag
- Expressversand

SZABO-SCANDIC Handels GmbH

Quellenstraße 110, A-1100 Wien

T. +43(0)1 489 3961-0

F. +43(0)1 489 3961-7

mail@szabo-scandic.com

www.szabo-scandic.com

[linkedin.com/company/szaboscandic](https://www.linkedin.com/company/szaboscandic)



EHMT1 Antibody

Rabbit Polyclonal

Antigen Affinity Purified	RefSeq ID	NP_079033.3
Catalog No. A301-642A	Uniprot ID	Q9H9B1
Lot No. A301-642A-2	GeneID	79813

APPLICATIONS	WB, IP, IHC
SPECIES REACTIVITY	Human
AMOUNT	100 µl
CONCENTRATION	200 µg/ml
STORAGE/SHELF LIFE	2 – 8°C / 1 year from date of receipt
PHYSICAL STATE	Liquid
BUFFER	Tris-buffered Saline containing 0.1% BSA and 0.09% Sodium Azide
ISOTYPE	IgG
ORIGIN	USA
PRODUCTION PROCEDURES	Antibody was affinity purified using an epitope specific to EHMT1 immobilized on solid support.

The epitope recognized by A301-642A maps to a region between residue 25 and 75 of human euchromatic histone-lysine N-methyltransferase 1 using the numbering given in entry NP_079033.3 (GeneID 79813).

Immunoglobulin concentration was determined by extinction coefficient: absorbance at 280 nm of 1.4 equals 1.0 mg of IgG.

APPLICATIONS Centrifuge tube to remove product from lid. Optimal working dilutions should be determined experimentally by the investigator. Prepare working dilution immediately before use.

Western Blot 1:2,000 – 1:10,000

Immunoprecipitation 2 – 10 µg/mg lysate

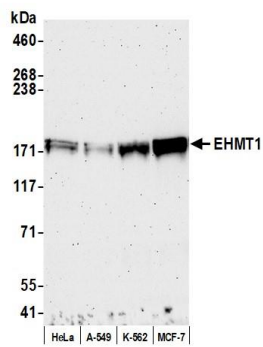
Immunohistochemistry 1:100 to 1:500. Epitope retrieval with citrate buffer pH6.0 is recommended for FFPE tissue sections.

IHC HUMAN CONTROLS Breast Carcinoma, Prostate Carcinoma, Testicular Seminoma

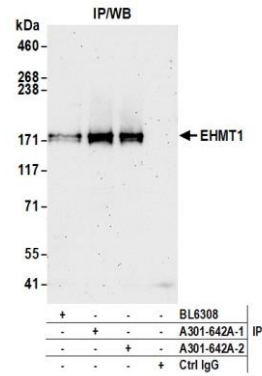
ADDITIONAL INFO <https://www.fortislifesciences.com/p/A301-642A>

Use the link above to view SDS, a current list of citations, and other product specific information.

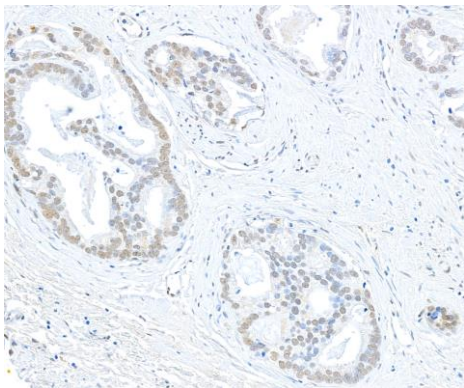
This document certifies that this product has met all of the quality control standards defined by Bethyl Laboratories, Inc.
Michael Spencer, PhD Date: November 15, 2022



Detection of human EHMT1 by western blot. *Samples:* Whole cell lysate (50 µg) from HeLa, A-549, K-562, and MCF-7 cells prepared using NETN lysis buffer. *Antibody:* Affinity purified rabbit anti-EHMT1 antibody (A301-642A lot 2) used for WB at 0.04 µg/ml. *Detection:* Chemiluminescence with an exposure time of 3 minutes.



Detection of human EHMT1 by western blot of immunoprecipitates. *Samples:* Whole cell lysate (1.0 mg per IP reaction; 10% of IP loaded) from HeLa cells prepared using NETN lysis buffer. *Antibodies:* Affinity purified rabbit anti-EHMT1 antibody (A301-642A lot 2) used for IP at 6 µg per reaction. EHMT1 was also immunoprecipitated by a previous lot of this antibody (A301-642A lot 1) and a second antibody against a different epitope of EHMT1 (BL6308). For blotting immunoprecipitated EHMT1, A301-642A was used at 0.04 µg/ml. *Detection:* Chemiluminescence with an exposure time of 75 seconds.



Detection of human EHMT1 by immunohistochemistry. *Sample:* FFPE section of human prostate carcinoma. *Antibody:* Affinity purified rabbit anti-EHMT1 (A301-642A Lot 2) used at a dilution of 1:200 (1 µg/ml). *Detection:* DAB